

APP CRS <b>244°</b>	Rwy Idg <b>5001</b>
	TDZE <b>150</b>
	Apt Elev <b>150</b>

# RNAV (GPS) RWY 24

GEORGE DOWNER (AIV)

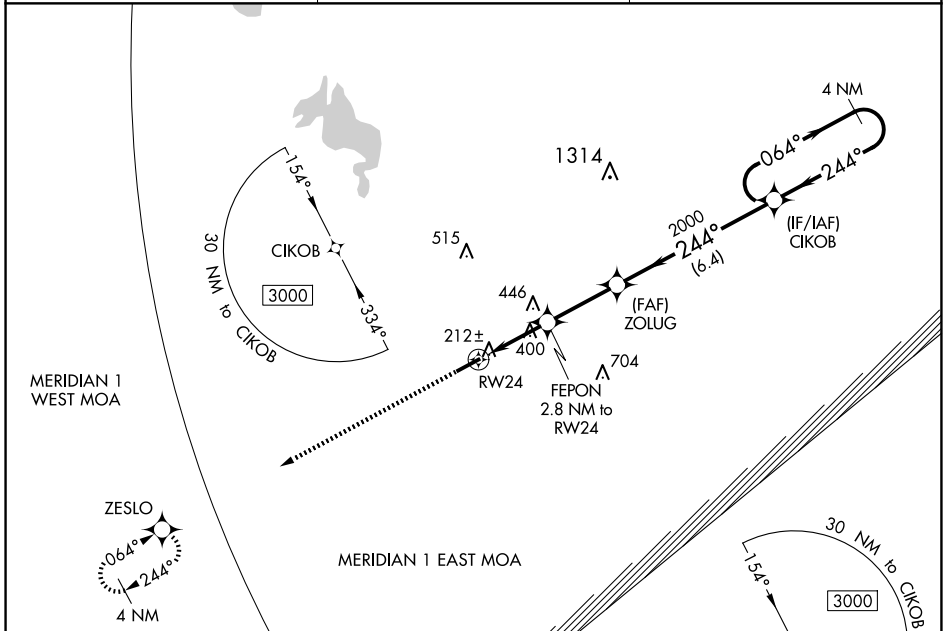
**NA** DME/DME RNP-0.3 NA. Use Tuscaloosa altimeter setting; when not received, use Columbus/W Point/Starkville altimeter setting and increase all MDAs 20 feet, and Circling Cat C visibility ¼ SM. Procedure NA at night. Rwy 24 helicopter visibility reduction below 1 SM NA.

**MISSED APPROACH:**  
Climb to 3000 direct ZESLO and hold.

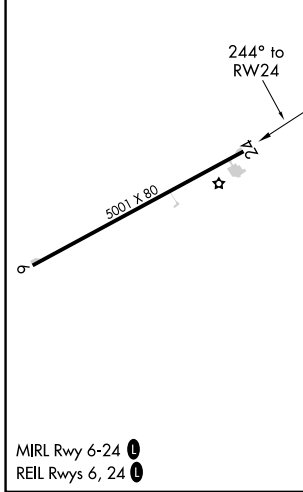
TCL ASOS  
**132.825**

COLUMBUS APP CON  
**135.6 323.275**

UNICOM  
**122.8 (CTAF) 0**



ELEV 150	TDZE 150
----------	----------



SE-4, 15 MAY 2025 to 12 JUN 2025

SE-4, 15 MAY 2025 to 12 JUN 2025