

LOC I-AHN <b>110.95</b>	APP CRS <b>274°</b>	Rwy Idg TDZE Apt Elev	<b>6122</b> <b>813</b> <b>813</b>
----------------------------	------------------------	-----------------------------	---

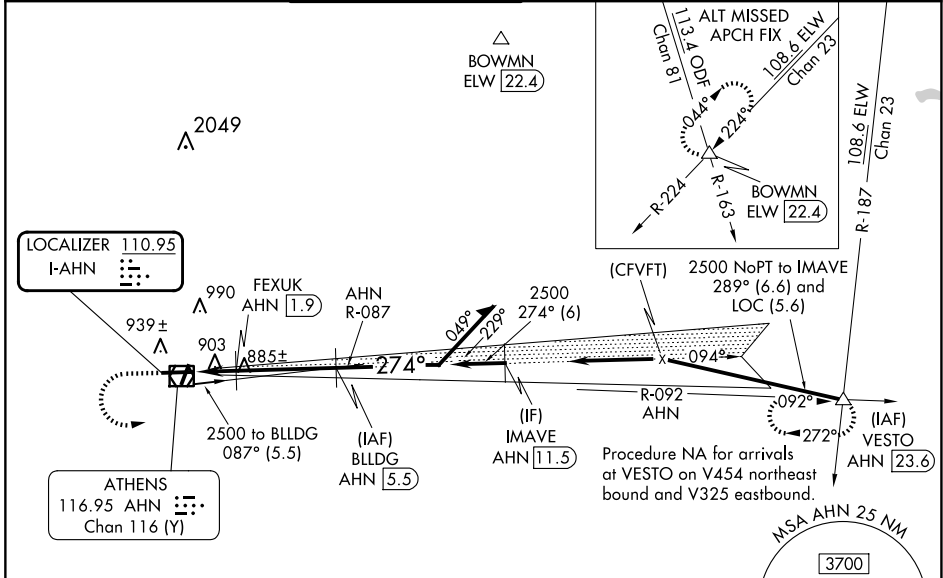
# ILS or LOC/DME RWY 27

ATHENS/BEN EPPS (AHN)

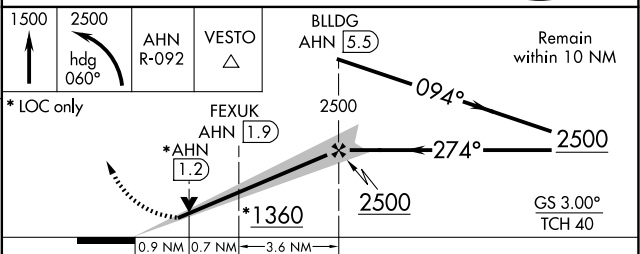
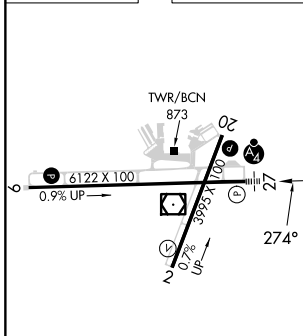
**▼** Night landing: Rwy 2, 20 NA. DME from AHN VOR/DME. Simultaneous reception of I-AHN and AHN DME Required. VDP NA with Winder altimeter setting. When local altimeter setting not received, use Winder altimeter setting; increase DA to 1071 feet; increase all MDA 60 feet and S-LOC 27 visibility Cats C and D to 1 SM and Circling Cat D visibility to 2 1/4 SM. For inop MALSF, increase S-LOC 27 all Cats visibility to 1 mile. For inop MALSF when using Winder altimeter setting, increase S-ILS 27 all Cats visibility to 2/8 mile and increase S-LOC 27 Cats A and B visibility to 1 mile, and Cats C and D to 1 1/8 mile. Inop table does not apply to S-ILS 27.

**MALSF** MISSED APPROACH: Climb to 1500 then climbing left turn to 2500 on heading 060° and AHN VOR/DME R-092 to VESTO INT/ AHN 23.6 DME and hold.

ASOS <b>132.875</b>	ATLANTA APP CON * <b>132.475 291.1</b>	ATHENS TOWER * <b>126.3 (CTAF) 338.275</b>	GND CON <b>121.8</b>	CLNC DEL <b>121.8</b>	CLNC DEL <b>132.475 291.1</b> (when twr closed)	UNICOM <b>122.95</b>
------------------------	---	---	-------------------------	--------------------------	---	-------------------------



ELEV 813	TDZE 813
----------	----------



MIRL Rwy 2-20 HIRL Rwys 9-27	* LOC only				
FAF to MAP 5.2 NM	* AHN 1.2				
Knots	60	90	120	150	180
Min:Sec	5:12	3:28	2:36	2:05	1:44
CATEGORY	A	B	C	D	
S-ILS 27		1013-3/4	200 (200-3/4)		
S-LOC 27		1160-3/4	347 (400-3/4)		
CIRCLING	1260-1 447 (500-1)	1280-1 467 (500-1)	1320-1 1/2 507 (600-1 1/2)	1460-2 647 (700-2)	

SE-4, 15 MAY 2025 to 12 JUN 2025

SE-4, 15 MAY 2025 to 12 JUN 2025