

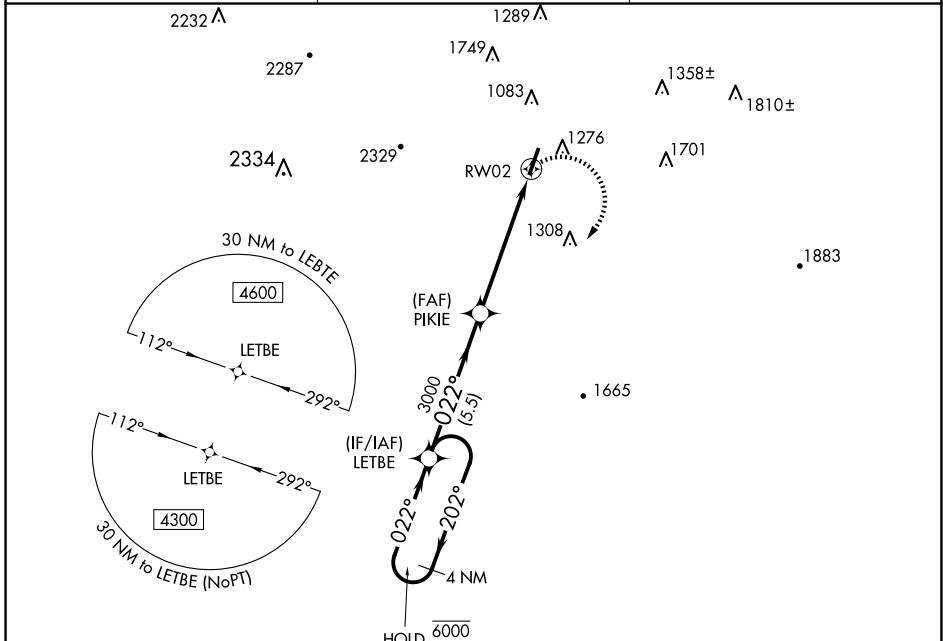
APP CRS	Rwy Idg	<b>4086</b>
<b>022°</b>	TDZE	<b>776</b>
	Apt Elev	<b>777</b>

# RNAV (GPS) RWY 2

BARWICK LAFAYETTE (9A5)

RNP APCH - GPS.	MISSED APPROACH: Climbing right turn to 4300 direct LETBE and hold, continue climb-in-hold to 4300.
<p>▼ Procedure NA at night. Rwy 2 helicopter visibility reduction below 1 SM NA. When local altimeter not received, use CHA altimeter setting and increase all MDAs 80 feet.</p> <p>▲</p>	

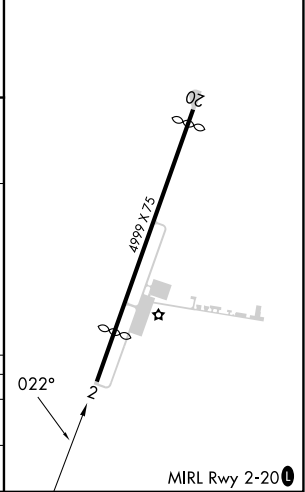
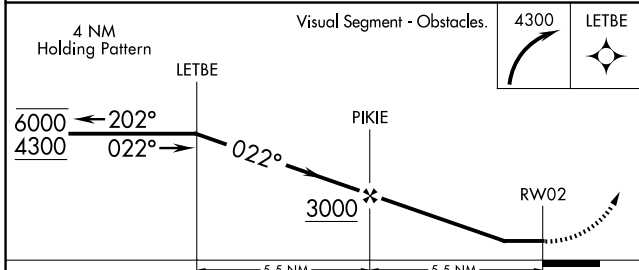
AWOS-3 <b>119.775</b>	CHATTANOOGA APP CON ★ <b>125.1 379.1</b>	UNICOM <b>122.8 (CTAF) 0</b>
--------------------------	---	---------------------------------



SE-4, 15 MAY 2025 to 12 JUN 2025

SE-4, 15 MAY 2025 to 12 JUN 2025

ELEV 777	<b>D</b> TDZE 776
----------	-------------------



CATEGORY	A	B	C	D
LNAV MDA	1480-1 704 (800-1)		NA	
<b>C</b> CIRCLING	1660-1¼ 883 (900-1¼)		NA	