

WAAS CH 90340 W07A	APP CRS 069°	Rwy Idg TDZE Apt Elev	5005 610 615
---------------------------------	------------------------	-----------------------------	---

RNAV (GPS) RWY 7

GUNTERSVILLE MUNI-JOE STARNES FIELD (8A1)

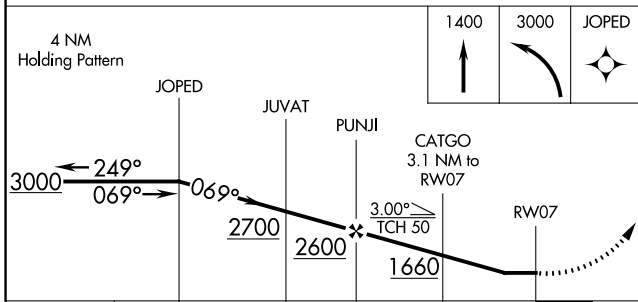
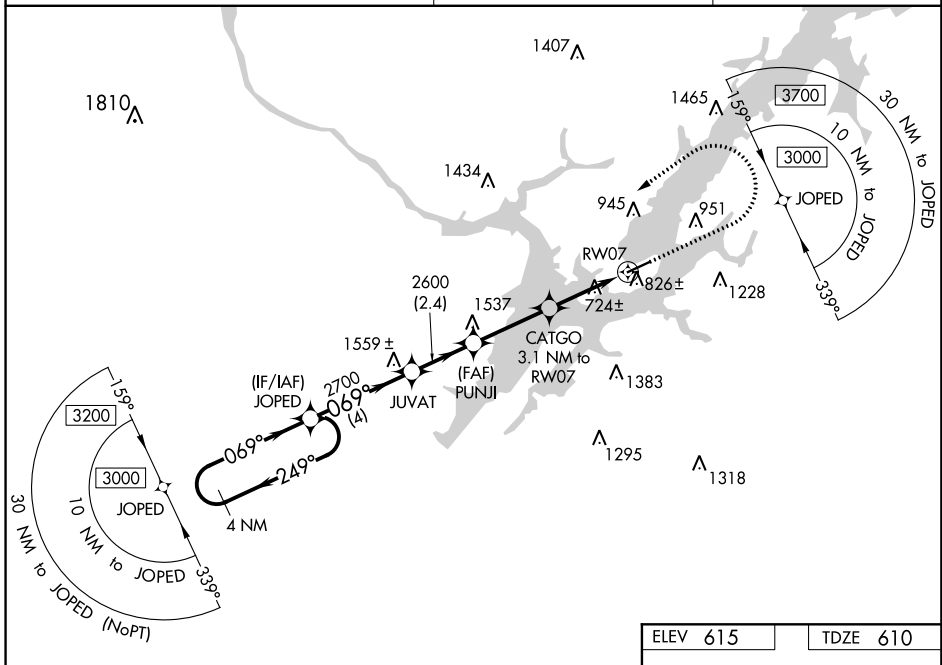
NA Circling NA to Rwys 6 and 24. Rwy 7 helicopter visibility reduction below 1 SM NA. DME/DME RNP-0.3 NA. Procedure NA at night. Use Scottsboro altimeter setting.

MISSED APPROACH: Climb to 1400 then climbing left turn to 3000 direct JOPED and hold.

SCOTTSBORO MUNI-WORD FIELD AWOS-3
120.125

HUNTSVILLE APP CON ★
125.6 354.1

UNICOM
122.8 (CTAF) 0



ELEV 615	TDZE 610
----------	----------

Detailed approach diagram showing the final approach to RWY 7. The heading is 069° to RWY 7. Altitudes are 5005 x 7.5 and 5500 x 200. The runway is 5005 x 7.5. A 30° turn is indicated at the end of the approach.

CATEGORY	A	B	C	D
LP MDA	1040-1	430 (500-1)	1040-1¼	430 (500-1¼)
LNAV MDA	1140-1	530 (600-1)	1140-1½	530 (600-1½)
CIRCLING	1320-1 705 (800-1)	1380-1 765 (800-1)	1620-3	1005 (1100-3)

REIL Rwys 7-25 0
MIRL Rwys 7-25 0

RNAV (GPS) RWY 7

SE-4, 12 OCT 2017 to 09 NOV 2017

SE-4, 12 OCT 2017 to 09 NOV 2017