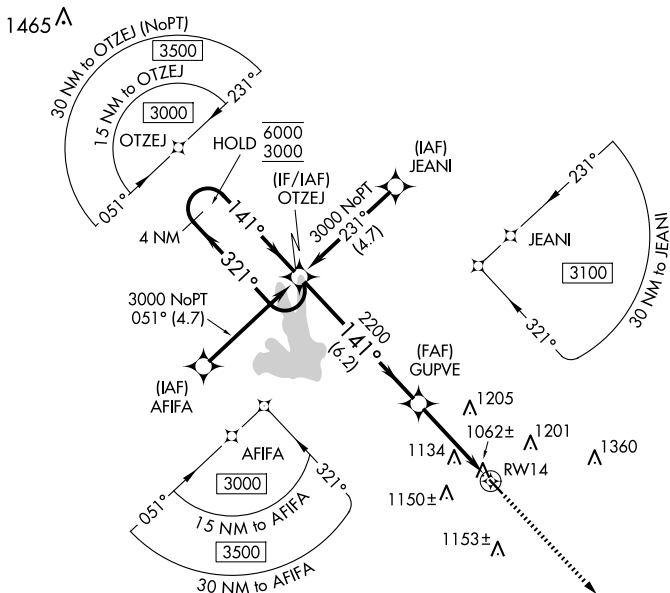


WAAS CH 70429 W14A	APP CRS 141°	Rwy Idg TDZE Apt Elev	3201 958 958
--	------------------------	-----------------------------	---

RNAV (GPS) RWY 14

GRIFFIN-SPALDING COUNTY (6A2)

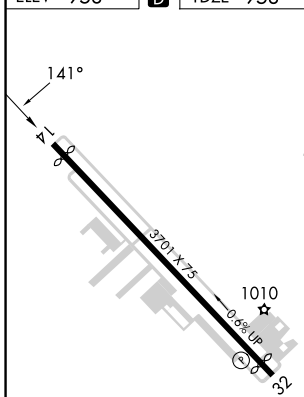
RNP APCH - GPS.		MISSED APPROACH: Climb to 3000 direct LUFEV and hold.	
<p>Procedure NA at night. Rwy 14 helicopter visibility reduction below 1 SM NA.</p>			
AWOS-3 119.750	ATLANTA APP CON 128.575 343.675	CLNC DEL 128.575 343.675	UNICOM 123.075 (CTAF) 0



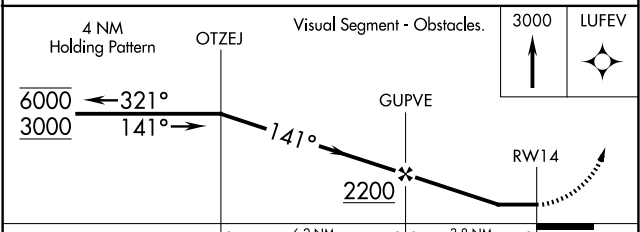
SE-4, 15 MAY 2025 to 12 JUN 2025

SE-4, 15 MAY 2025 to 12 JUN 2025

ELEV 958	D	TDZE 958
----------	----------	----------



REIL Rwy 14 and 32
MIRL Rwy 14-32



CATEGORY	A	B	C	D
LP MDA	1320-1	362 (400-1)	NA	
LNAV MDA	1440-1	482 (500-1)	NA	