

APP CRS **097°**
 Rwy Idg **4206**
 TDZE **240**
 Apt Elev **251**

RNAV (GPS) RWY 10

BIBB COUNTY (ØA8)

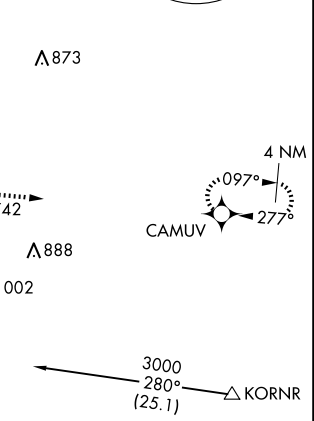
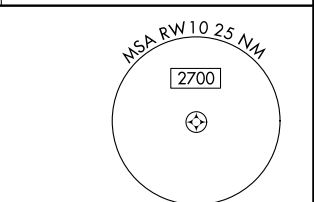
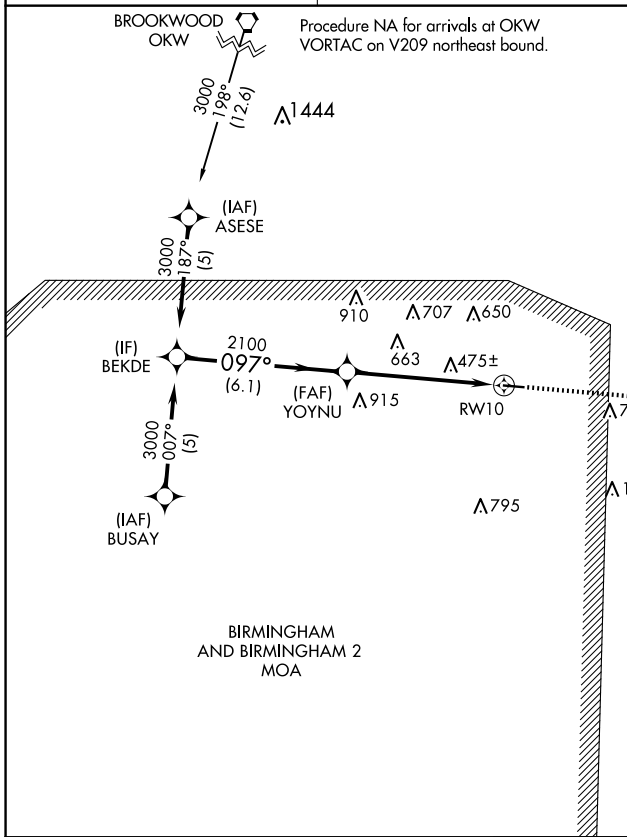
RNP APCH.
 ▼ Rwy 10 helicopter visibility reduction below 1 SM NA. Use Tuscaloosa altimeter setting; when not received, use Alabaster altimeter setting and increase all MDAs 20 feet. Procedure NA at night.
 ▲ NA

MISSED APPROACH: Climb to 3000 direct CAMUV and hold.

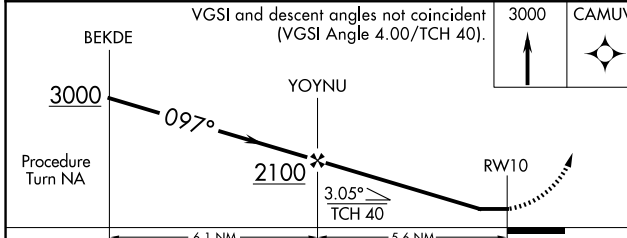
TCL ASOS
132.825

ATLANTA CENTER
132.25 263.025

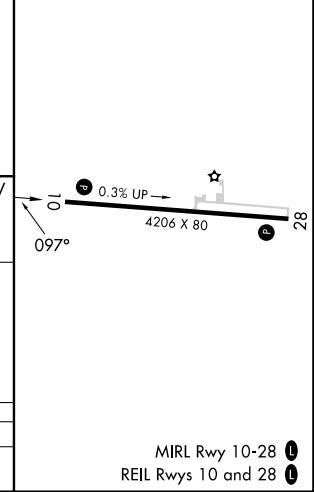
UNICOM
122.975 (CTAF) 0



ELEV 251 TDZE 240



| CATEGORY | A | B | C | D |
|----------|-------|-------------|----------------------|----|
| LNVA MDA | 960-1 | 720 (800-1) | 960-2 720 (800-2) | NA |



SE-4, 07 AUG 2025 to 04 SEP 2025

SE-4, 07 AUG 2025 to 04 SEP 2025