

WAAS CH 69234 W05A	APP CRS 050°	Rwy Idg 5000 TDZE 17 Apt Elev 18
--	------------------------	---

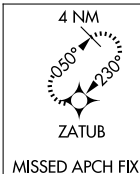
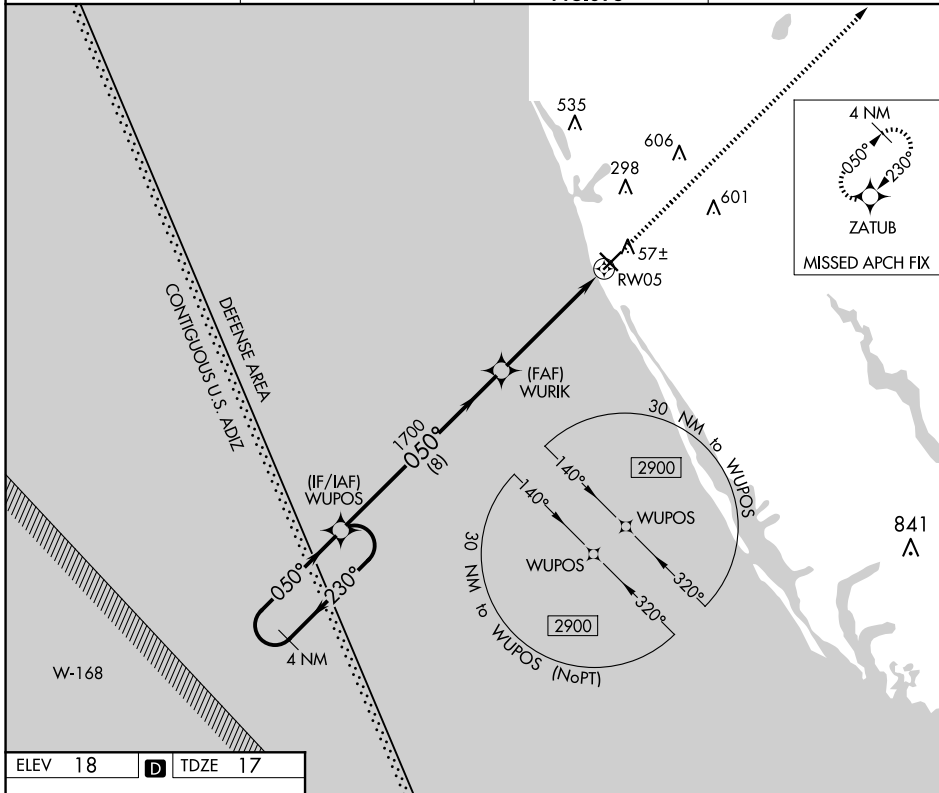
RNAV (GPS) RWY 5

VENICE MUNI (VNC)

▼ When local altimeter setting not received, use Sarasota altimeter setting and increase all MDA 60 feet, increase LNAV Cat C, D visibility 1/8 mile, and Circling Cat C visibility 1/4 mile. DME/DME RNP-0.3 NA.
▲ Helicopter visibility reduction below 3/4 SM NA.

MISSED APPROACH:
Climb to 2900 direct ZATUB and hold.

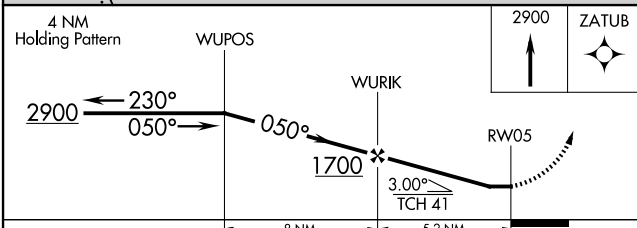
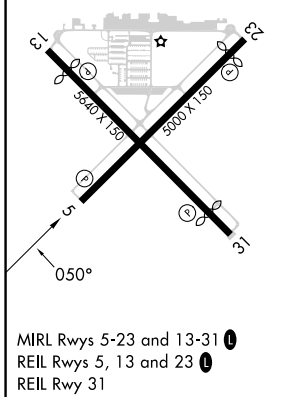
AWOS-3 119.275	TAMPA APP CON 119.65 353.575	CLNC DEL 118.075	UNICOM 122.725 (CTAF)
--------------------------	--	----------------------------	---------------------------------



SE-3, 15 MAY 2025 to 12 JUN 2025

SE-3, 15 MAY 2025 to 12 JUN 2025

ELEV 18	D	TDZE 17
---------	----------	---------



CATEGORY	A	B	C	D
LP MDA	460-1	443 (500-1)	460-1 ³ / ₈	443 (500-1 ³ / ₈)
LNAV MDA	480-1	463 (500-1)	480-1 ³ / ₈	463 (500-1 ³ / ₈)
C CIRCLING	500-1	482 (500-1)	700-2 682 (700-2)	920-3 902 (1000-3)