

WAAS CH <b>78100</b> <b>W23A</b>	APP CRS <b>226°</b>	Rwy Idg <b>4200</b> TDZE <b>21</b> Apt Elev <b>21</b>
--	------------------------	---

# RNAV (GPS) RWY 23

TAMPA EXEC (VDF)

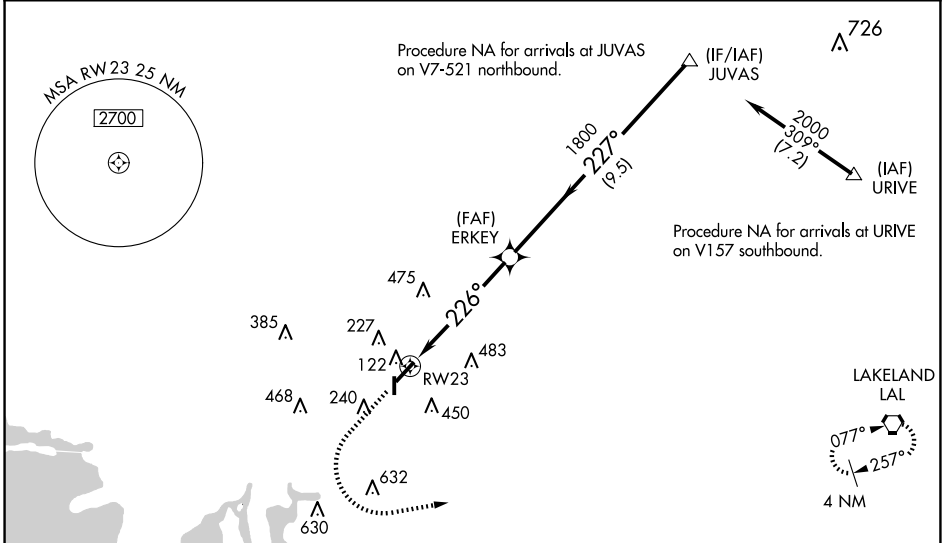
RNP APCH-GPS.

▼ Inop table does not apply to LPV and LNAV Cat A/B. Baro-VNAV NA when using Tampa Intl altimeter setting. For uncompensated Baro-VNAV systems, LNAV/VNAV  
 ▲ NA below -15°C (5°F) or above 54°C (130°F). Rwy 23 helicopter visibility reduction below 3/4 SM NA. When local altimeter setting not received, use Tampa Intl altimeter setting and increase LPV DA to 323 feet, LNAV/VNAV DA to 513; increase all MDAs 40 feet, and LNAV and Circling Cat C visibilities 1/4 SM. Circling Rwy 18, 36 NA at night.

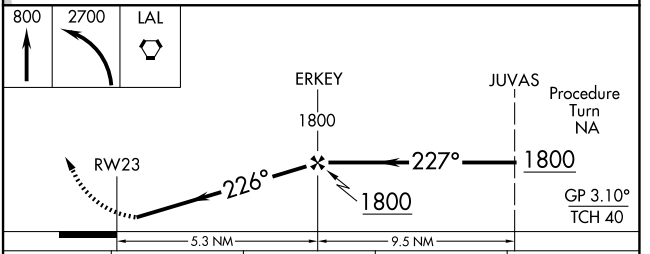
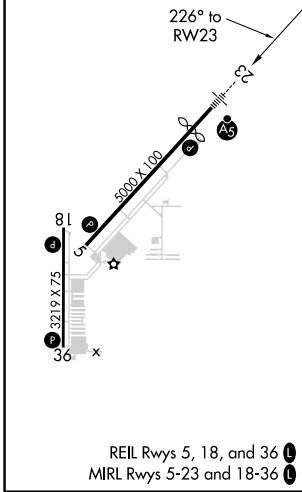
MALS R

MISSED APPROACH:  
Climb to 800 then climbing left turn to 2700 direct to LAL VORTAC and hold.

AWOS-3 <b>121.125</b>	TAMPA APP CON <b>119.9 290.3</b>	UNICOM <b>122.7</b> (CTAF) <b>0</b>
--------------------------	-------------------------------------	--



ELEV 21	<b>D</b>	TDZE 21
---------	----------	---------



CATEGORY	A	B	C	D
LPV DA	298-1	277 (300-1)		NA
LNAV/VNAV DA	488-1 1/8	467 (500-1 1/8)		NA
LNAV MDA	560-1	539 (600-1)		NA
CIRCLING	560-1 539 (600-1)	760-1 739 (800-1)	800-2 1/4 779 (800-2 1/4)	NA

SE-3, 15 MAY 2025 to 12 JUN 2025

SE-3, 15 MAY 2025 to 12 JUN 2025