

APP CRS	Rwy Idg	3219
184°	TDZE	19
	Apt Elev	21

RNAV (GPS) RWY 18

TAMPA EXEC (VDF)

RNP APCH.

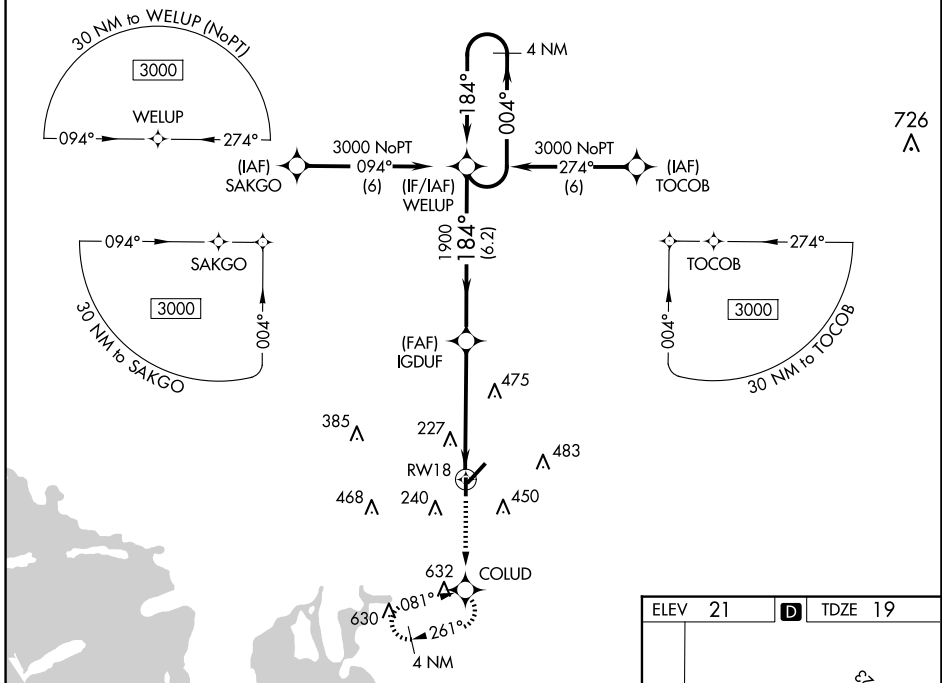
⚠ When local altimeter not received, use Tampa Intl altimeter setting and increase all MDA 40 feet. Straight-in Rwy 18 NA at night, Circling Rwy 18, 36 NA at night. Rwy 18 helicopter visibility reduction below 1 SM NA.

MISSED APPROACH: Climb to 3000 direct COLUD and hold, continue climb-in-hold to 3000.

AWOS-3
121.125

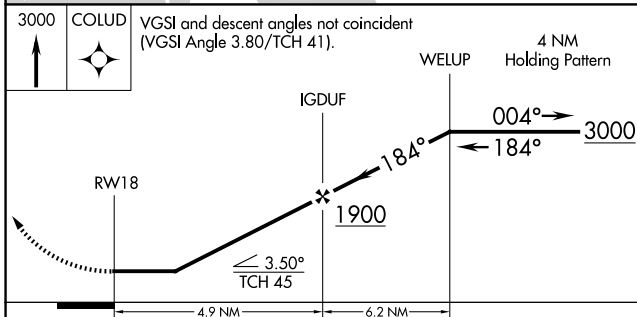
TAMPA APP CON
119.9 290.3

UNICOM
122.7 (CTAF)



SE-3, 15 MAY 2025 to 12 JUN 2025

SE-3, 15 MAY 2025 to 12 JUN 2025



ELEV	21	TDZE	19
------	-----------	------	-----------

The inset diagram shows the RWY 18 approach path with altitudes and distances. It includes the 184° heading to RWY 18, the 3000 X 100 ft holding pattern, and the 4 NM segment to RWY 18. The diagram also shows the RWY 18 and the COLUD holding pattern.

CATEGORY	A	B	C	D
LNAV MDA	580-1	561 (600-1)		NA
C CIRCLING	580-1 559 (600-1)	760-1 739 (800-1)		NA

REIL Rwys 5, 18, and 36
MRL Rwys 5-23 and 18-36