

TAMPA, FLORIDA

AL-417 (FAA)

25219

WAAS CH <b>63220</b> <b>W36A</b>	APP CRS <b>344°</b>	Rwy Ldg <b>2311</b> TDZE <b>7</b> Apt Elev <b>7</b>
--	------------------------	---

# RNAV (GPS) RWY 36

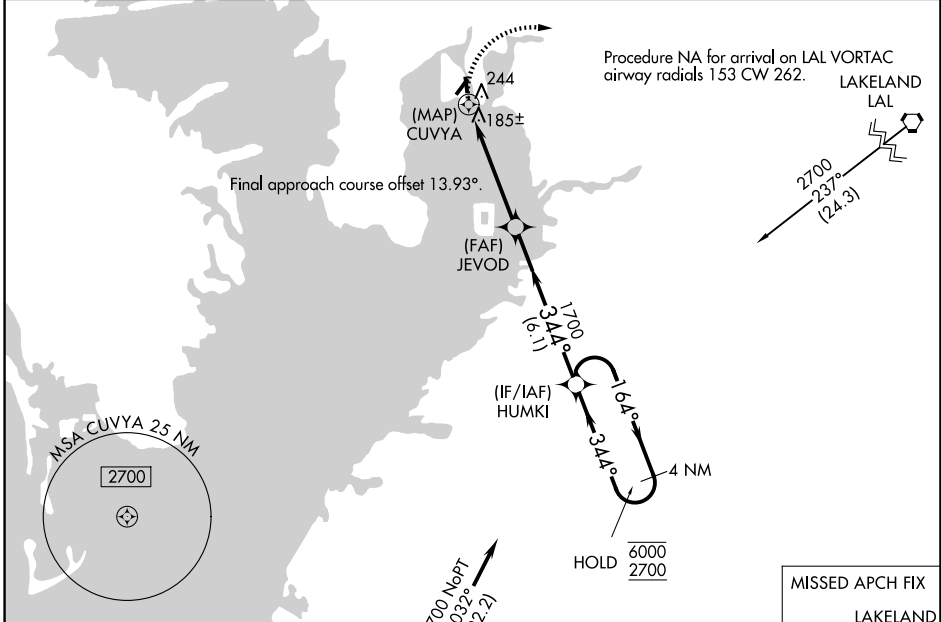
PETER O KNIGHT (TPF)

RNP APCH.

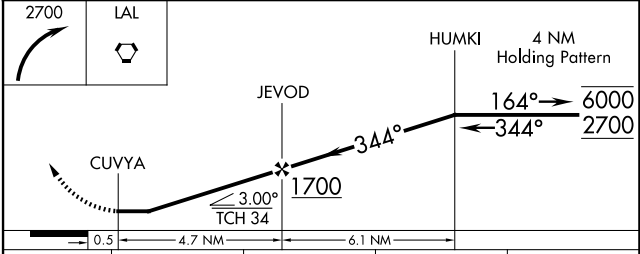
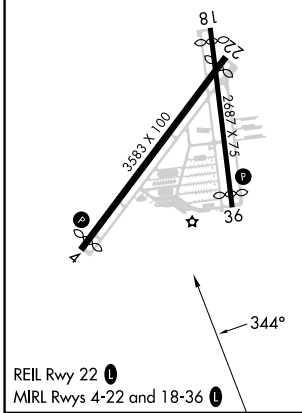
**⚠** Circling NA northwest of Rwy 4-22. Procedure NA at night. Rwy 36 helicopter visibility reduction below 1 SM NA. When local altimeter setting not received, use Tampa Intl altimeter setting and increase all MDA 20 feet. Circling NA to Rwy 18.

**MISSED APPROACH:** Climbing right turn to 2700 direct LAL VORTAC and hold.

AWOS-3 <b>118.925</b>	TAMPA APP CON <b>119.9 290.3</b>	CLNC DEL <b>119.8</b>	UNICOM <b>122.725 (CTAF) 0</b>
--------------------------	-------------------------------------	--------------------------	-----------------------------------



ELEV 7	<b>D</b>	TDZE 7
--------	----------	--------



CATEGORY	A	B	C	D
LP MDA	440-1	433 (500-1)		NA
LNAV MDA	500-1	493 (500-1)		NA
CIRCLING	720-1	713 (800-1)		NA

TAMPA, FLORIDA  
Amdt 2E 26MAR20

27°55'N-82°27'W

PETER O KNIGHT (TPF)  
**RNAV (GPS) RWY 36**

SE-3, 07 AUG 2025 to 04 SEP 2025

SE-3, 07 AUG 2025 to 04 SEP 2025