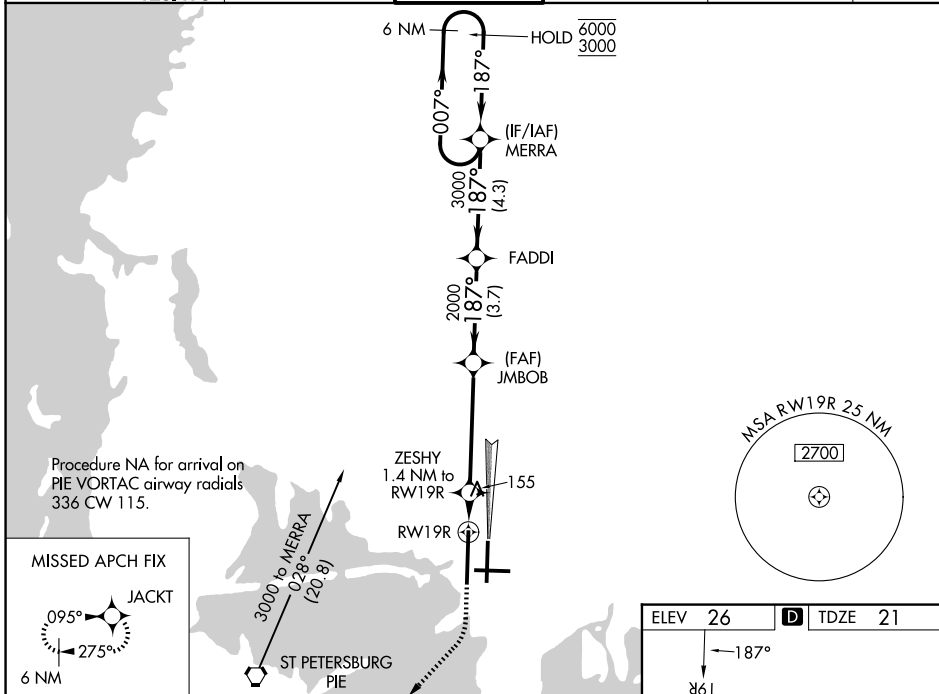


WAAS CH 40406 W19B	APP CRS 187°	Rwy Ldg 11002 TDZE 21 Apt Elev 26
--	------------------------	--

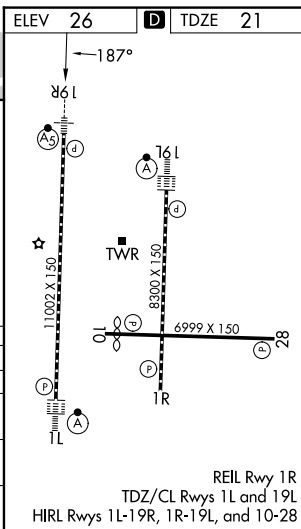
RNAV (GPS) RWY 19R

TAMPA INTL (TPA)

RNP APCH - GPS.					MALSR		MISSED APPROACH: Climb to 800 then climbing right turn to 2000 direct JACKT and hold.	
<p>▼ LNAV procedure NA during simultaneous operations. Simultaneous approach authorized. ▲ Use of FD or AP required during simultaneous operations. For uncompensated Baro-VNAV systems, LNAV/VNAV NA below 4°C or above 54°C. For inop ALS, increase LPV visibility Cat E to RVR 4000, LNAV/VNAV visibility all Cats to RVR 6000, and LNAV visibility Cat C/D/E to RVR 6000. * RVR 1800 authorized with use of FD or AP or HUD to DA.</p>								
ARR	D-ATIS	DEP	TAMPA APP CON	TAMPA TOWER	GND CON	CLNC DEL	CPDLC	
126.45		128.475	118.5 307.175	119.5 269.4	121.7 269.4	133.6		



800	2000	JACKT	VGSI and RNAV glidepath not coincident (VGSI Angle 3.00/TCH 71).		6 NM Holding Pattern
CATEGORY	A	B	C	D	E
LPV DA*	221/24		200 (200-½)		
LNAV/VNAV DA	440/40		419 (500-¾)		
LNAV MDA	440/24	419 (500-½)	440/40	419 (500-¾)	
CIRCLING	600-1	574 (600-1)	680-1¾ 654 (700-1¾)	980-3	954 (1000-3)



SE-3, 07 AUG 2025 to 04 SEP 2025

SE-3, 07 AUG 2025 to 04 SEP 2025