

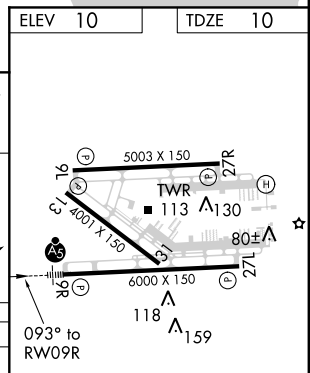
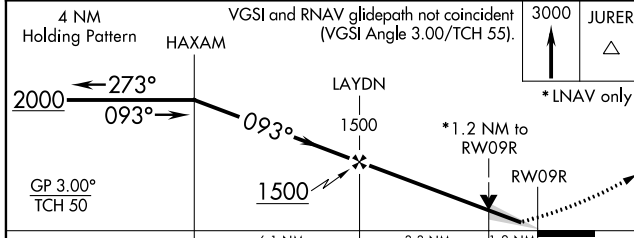
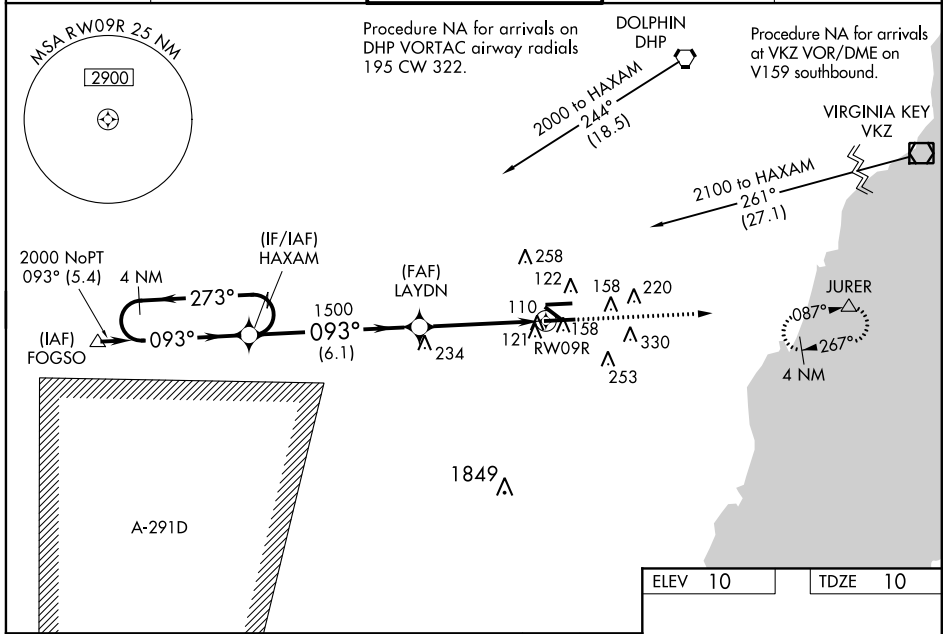
WAAS CH 72900 W09A	APP CRS 093°	Rwy Idg TDZE Apt Elev	6000 10 10
--	------------------------	-----------------------------	---------------------------------------

RNAV (GPS) RWY 9R

MIAMI EXECUTIVE (TMB)

<p>⚠ Circling Rwy 13 NA at night. For uncompensated Baro-VNAV systems, LNAV/VNAV NA below -15°C (5°F) or above 43°C (109°F). For inop MALSR, increase LNAV/VNAV all Cats visibility to ¾. DME/DME RNP-0.3 NA. Baro-VNAV and VDP NA when using Miami Intl altimeter setting. When local altimeter setting not received, use Miami Intl altimeter setting and increase LPV DA to 237, LNAV/VNAV DA to 329 and all MDA 40 feet, increase LNA Cats C/D visibility ½ mile and Circling Cat D visibility ½ mile.</p>	<p>MALSR</p>	<p>MISSED APPROACH: Climb to 3000 direct JURER and hold, continue climb-in-hold to 3000.</p>

ATIS 124.0	MIAMI APP CON 125.5 354.1	TAMIAMI TOWER ★ 118.9 (CTAF) 0	GND CON 121.7	CLNC DEL 133.0
----------------------	-------------------------------------	---	-------------------------	--------------------------



CATEGORY	A	B	C	D
LPV DA	210-½ 200 (200-½)			
LNAV/VNAV DA	302-½ 292 (300-½)			
LNAV MDA	460-½ 450 (500-½)	460-⅞ 450 (500-⅞)		
CIRCLING	460-1 450 (500-1)	460-1⅛ 450 (500-1⅛)	640-2 630 (700-2)	

REIL Rwy 13
HIRL Rwy 9R-27L
MIRL Rwy 9L-27R and 13-31

SE-3, 12 OCT 2017 to 09 NOV 2017

SE-3, 12 OCT 2017 to 09 NOV 2017