

| | | | |
|--|------------------------|---|-------------|
| WAAS CH 56612 W18B | APP CRS 181° | Rwy Idg TDZE 32 Apt Elev 34 | 6930 |
|--|------------------------|---|-------------|

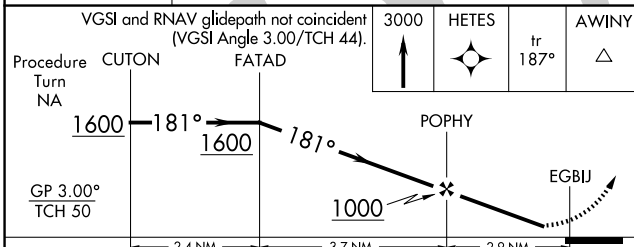
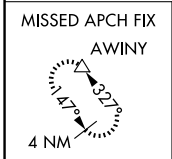
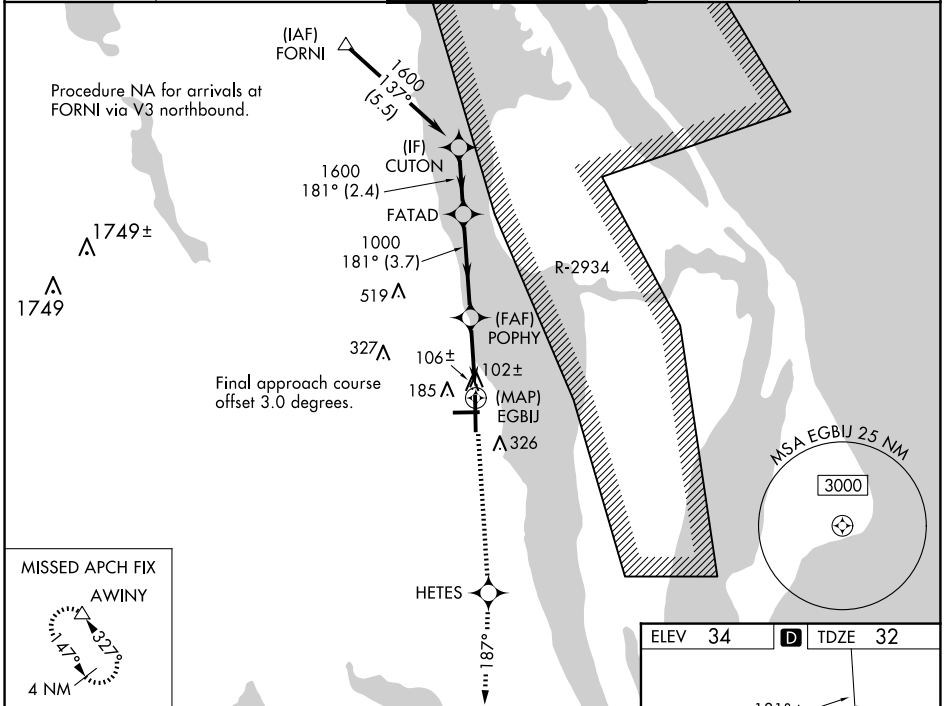
RNAV (GPS) Z RWY 18

SPACE COAST RGNL (TIX)

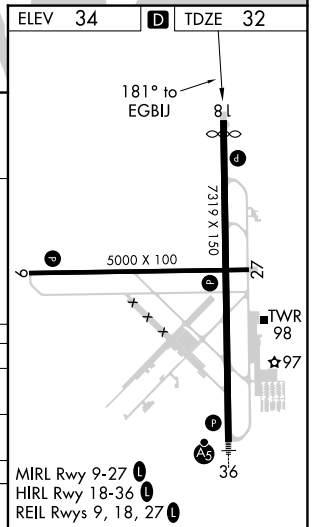
▼ Baro-VNAV NA when using Melbourne altimeter setting. For uncompensated Baro-VNAV systems, LNAV/VNAV NA below -15°C (5°F) or above 47°C (116°F). DME/DME RNP-0.3 NA. Visibility reduction by helicopters NA. When control tower closed, use Melbourne altimeter setting.

MISSED APPROACH: Climb to 3000 direct HETES and via track 187° to AWINY and hold.

| | | | | |
|------------------------|--|--|--------------------------|-------------------------|
| ATIS 120.625 | ORLANDO APP CON 134.95 281.425 | SPACE COAST TOWER ★ 118.9 (CTAF) 0 | GND CON 121.85 | UNICOM 122.95 |
|------------------------|--|--|--------------------------|-------------------------|



| | | | | |
|--------------------------------------|---|--------|--------------|---|
| CATEGORY | A | B | C | D |
| LPV DA | | 332-1 | 300 (300-1) | |
| LNAV/VNAV DA | | 377-1¼ | 345 (400-1¼) | |
| MELBOURNE ALTIMETER SETTING MINIMUMS | | | | |
| LNAV/VNAV DA | | 437-1½ | 405 (500-1½) | |



SE-3, 15 MAY 2025 to 12 JUN 2025

SE-3, 15 MAY 2025 to 12 JUN 2025