

MIAMI APP CON  
120.5 350.20  
MIAMI INTL D-ATIS  
119.15  
MIAMI EXECUTIVE ATIS  
124.0  
NORTH PERRY ATIS  
135.475  
OPA LOCKA ATIS  
125.9

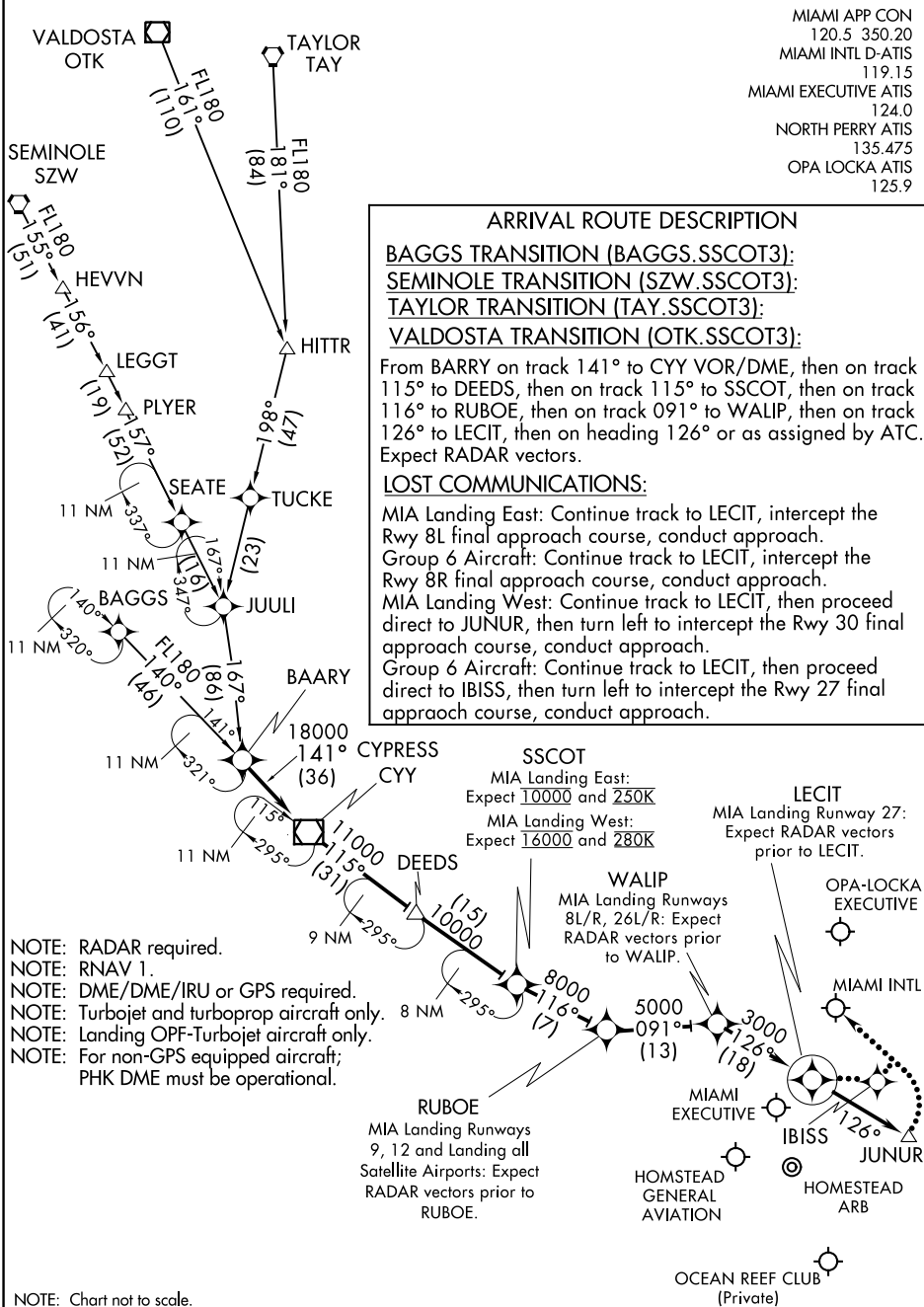
**ARRIVAL ROUTE DESCRIPTION**

BAGGS TRANSITION (BAGGS.SSCOT3):  
SEMINOLE TRANSITION (SZW.SSCOT3):  
TAYLOR TRANSITION (TAY.SSCOT3):  
VALDOSTA TRANSITION (OTK.SSCOT3):

From BARRY on track 141° to CYY VOR/DME, then on track 115° to DEEDS, then on track 115° to SSCOT, then on track 116° to RUBOE, then on track 091° to WALIP, then on track 126° to LECIT, then on heading 126° or as assigned by ATC. Expect RADAR vectors.

**LOST COMMUNICATIONS:**

MIA Landing East: Continue track to LECIT, intercept the Rwy 8L final approach course, conduct approach.  
 Group 6 Aircraft: Continue track to LECIT, intercept the Rwy 8R final approach course, conduct approach.  
 MIA Landing West: Continue track to LECIT, then proceed direct to JUNUR, then turn left to intercept the Rwy 30 final approach course, conduct approach.  
 Group 6 Aircraft: Continue track to LECIT, then proceed direct to IBISS, then turn left to intercept the Rwy 27 final approach course, conduct approach.



SE-3, 22 JUN 2017 to 20 JUL 2017

SE-3, 22 JUN 2017 to 20 JUL 2017

NOTE: RADAR required.  
 NOTE: RNAV 1.  
 NOTE: DME/DME/IRU or GPS required.  
 NOTE: Turbojet and turboprop aircraft only.  
 NOTE: Landing OPF-Turbojet aircraft only.  
 NOTE: For non-GPS equipped aircraft;  
 PHK DME must be operational.

**SSCOT**  
 MIA Landing East:  
 Expect 10000 and 250K  
 MIA Landing West:  
 Expect 16000 and 280K

**LECIT**  
 MIA Landing Runway 27:  
 Expect RADAR vectors prior to LECIT.

**WALIP**  
 MIA Landing Runways 8L/R, 26L/R:  
 Expect RADAR vectors prior to WALIP.

**RUBOE**  
 MIA Landing Runways 9, 12 and Landing all Satellite Airports:  
 Expect RADAR vectors prior to RUBOE.

NOTE: Chart not to scale.