

APP CRS <b>223°</b>	Rwy Idg <b>5006</b>
	TDZE <b>24</b>
	Apt Elev <b>30</b>

# RNAV (GPS) RWY 22

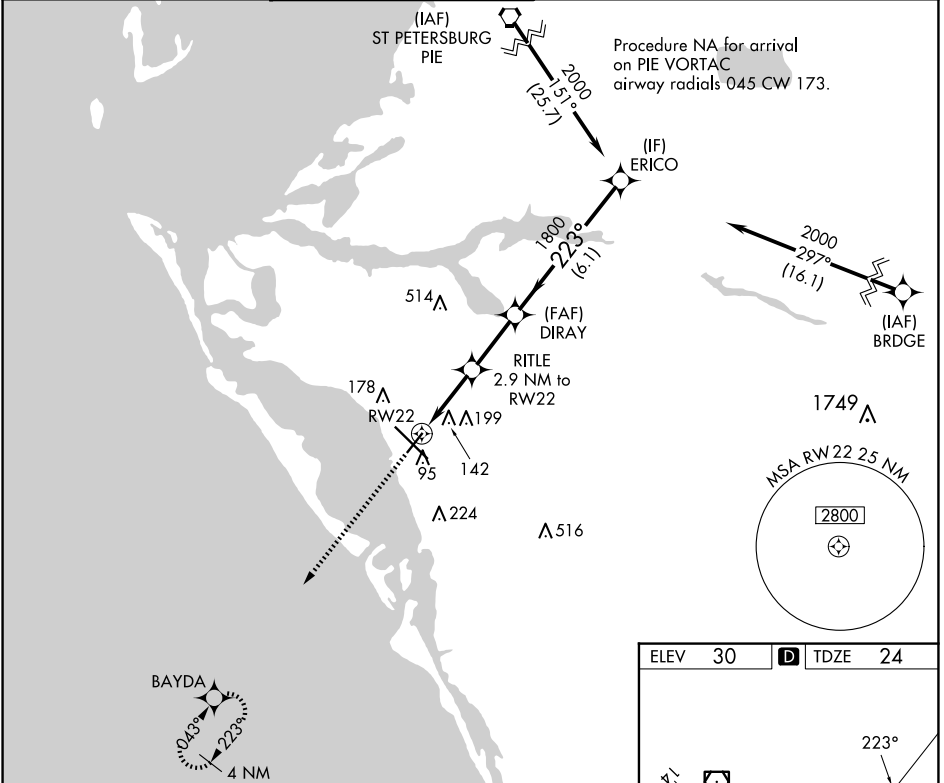
SARASOTA/BRADENTON INTL (SRQ)

RNP APCH.

**▼** Rwy 22 helicopter visibility reduction below 1 SM NA. For uncompensated Baro-VNAV systems, LNAV/VNAV NA below -1.5°C or above 43°C.

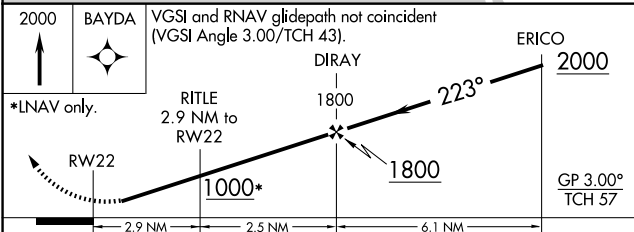
MISSED APPROACH: Climb to 2000 direct BAYDA and hold.

ATIS <b>124.375</b>	TAMPA APP CON <b>119.65 353.575</b>	SARASOTA TOWER ★ <b>120.1(CTAF) 256.8</b>	GND CON <b>121.9 273.6</b>	CLNC DEL <b>118.25</b>	UNICOM <b>122.95</b>
------------------------	--	--	-------------------------------	---------------------------	-------------------------

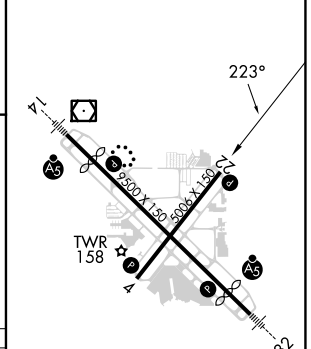


SE-3, 15 MAY 2025 to 12 JUN 2025

SE-3, 15 MAY 2025 to 12 JUN 2025



ELEV 30	<b>D</b> TDZE 24
---------	------------------



CATEGORY	A	B	C	D
LNAV/ VNAV DA	303-1		279 (300-1)	
LNAV MDA	400-1		376 (400-1)	
CIRCLING	500-1	470 (500-1)	600-1½ 570 (600-1½)	600-2 570 (600-2)