

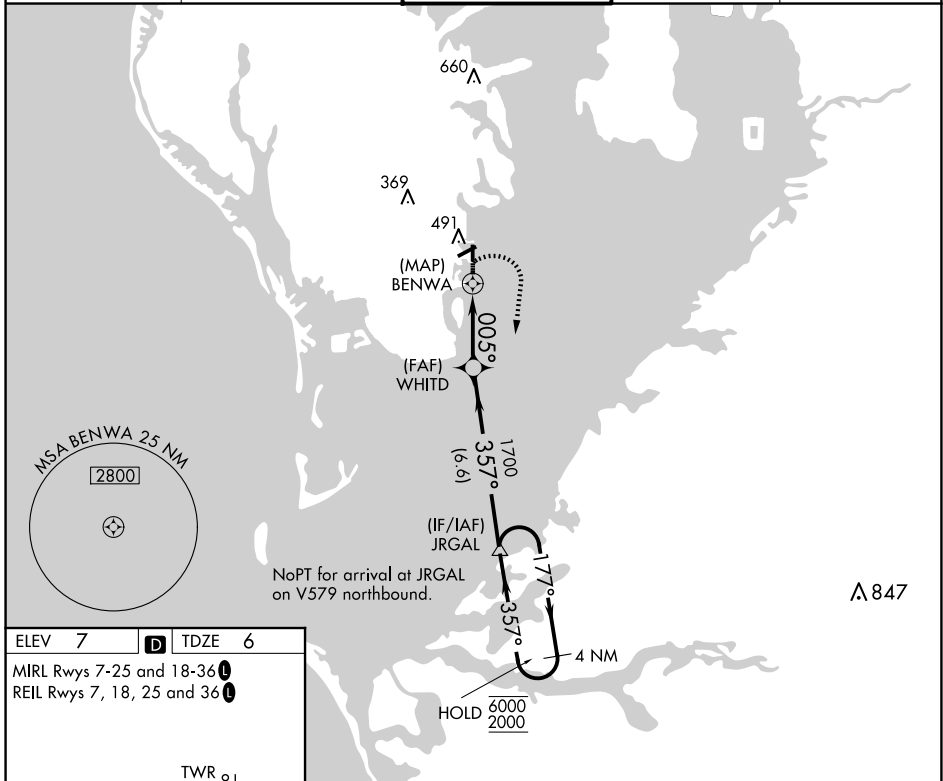
APP CRS 005°	Rwy Idg TDZE Apt Elev	2559 6 7
------------------------	-----------------------------	-------------------------------------

RNAV (GPS) RWY 36

ALBERT WHITTED (SPG)

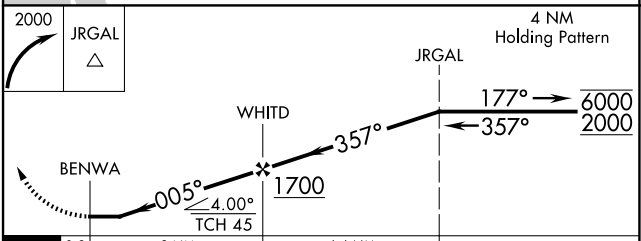
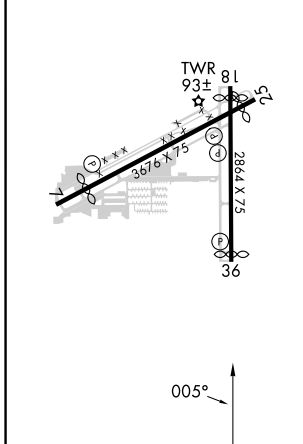
RNP APCH - GPS.	MISSED APPROACH: Climbing right turn to 2000 direct JRGAL and hold.
<p>▼ Circling NA northwest of Rwy 7 and 18. Procedure NA at night.</p> <p>▲ Rwy 36 helicopter visibility reduction below 1 SM NA.</p>	

ASOS 118.875	TAMPA APP CON 119.65 316.05 (EAST) 125.3 316.05 (WEST)	WHITTED TOWER ★ 127.4 (CTAF) 0 257.6	GND CON 121.8	UNICOM 122.95
------------------------	--	--	-------------------------	-------------------------



ELEV 7	D	TDZE 6
--------	----------	--------

MIRL Rwy 7-25 and 18-36
REIL Rwy 7, 18, 25 and 36



CATEGORY	A	B	C	D
LNNAV MDA	540-1 $\frac{1}{8}$	534 (600-1 $\frac{1}{8}$)		NA
C CIRCLING	540-1 $\frac{1}{4}$	533 (600-1 $\frac{1}{4}$)		NA