

APP CRS	Rwy ldg	<b>9908</b>
<b>258°</b>	TDZE	<b>7</b>
	Apt Elev	<b>10</b>

# RNAV (GPS) RWY 26

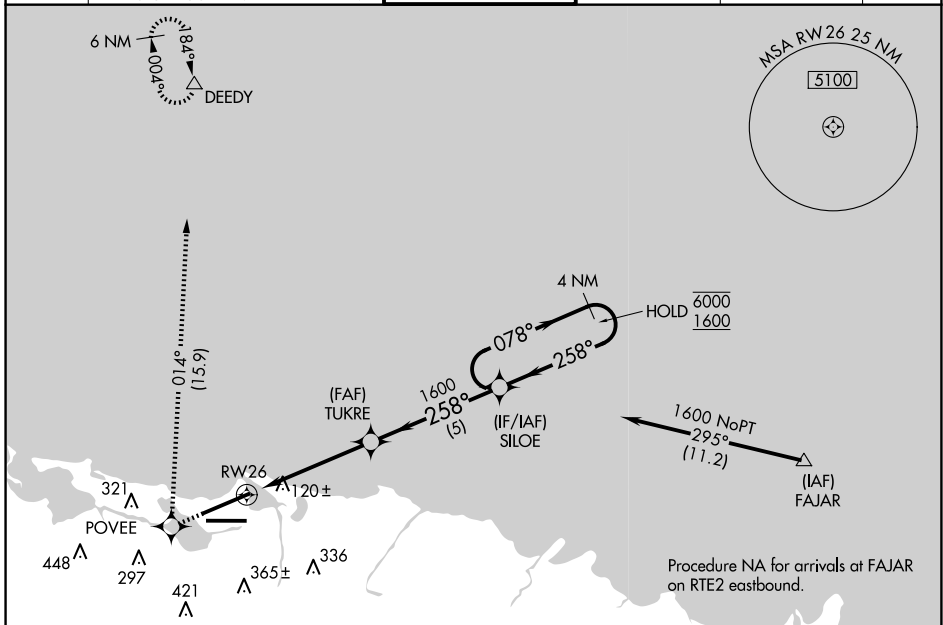
LUIS MUNOZ MARIN INTL (SJU)(TJSJ)

RNP APCH.

**▼** For uncompensated Baro-VNAV systems, LNAV/VNAV  
**▲** NA below 22°C or above 54°C.

MISSED APPROACH: Climb to 3000 direct POVEE and right turn on track 014° direct DEEDY and hold.

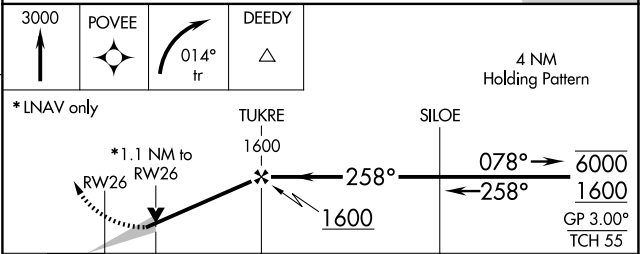
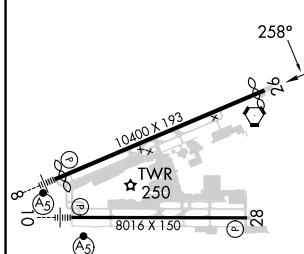
D-ATIS	SAN JUAN APP CON	SAN JUAN TOWER	GND CON	CLNC DEL	CPDLC
<b>125.8</b>	<b>119.4 269.2</b> (WEST & SW) <b>120.9 290.2</b> (NORTH & EAST)	<b>132.05 257.8</b>	<b>121.9 348.6</b>	<b>126.4 284.6</b>	



SE-3, 15 MAY 2025 to 12 JUN 2025

SE-3, 15 MAY 2025 to 12 JUN 2025

ELEV 10	<b>D</b>	TDZE 7
---------	----------	--------



CATEGORY	A	B	C	D
LNAV/VNAV DA	384-1¼ 377 (400-1¼)			
LNAV MDA	400-1	393 (400-1)	400-1½ 393 (400-1½)	400-1¼ 393 (400-1¼)
<b>C</b> CIRCLING	600-1	590 (600-1)	740-2 730 (800-2)	920-3 910 (1000-3)

REIL Rwy 26  
 HIRL Rwy 8-26 and 10-28