

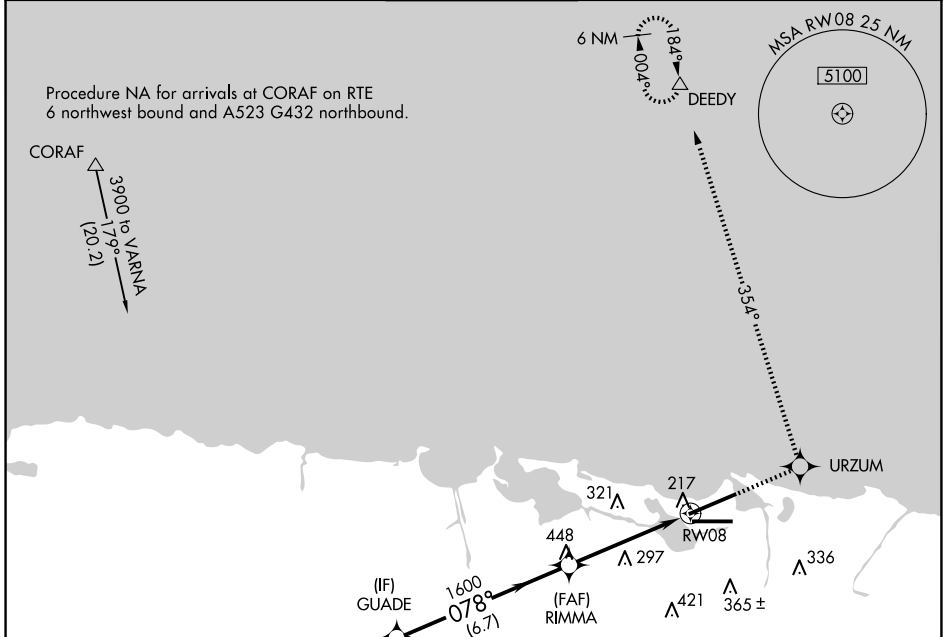
APP CRS 078°	Rwy Idg 9384
	TDZE 9
	Apt Elev 10

RNAV (GPS) RWY 8

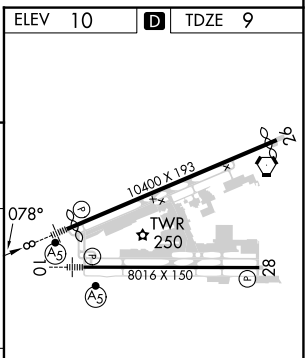
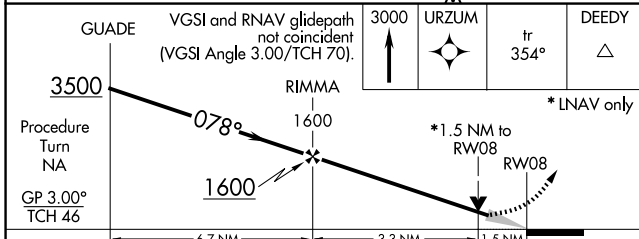
LUIS MUNOZ MARIN INTL (SJU)(TJSJ)

⚠	WAAS VNAV NA. For uncompensated Baro-VNAV systems, LNAV/VNAV NA below -15°C (5°F) or above 48°C (118°F). DME/DME RNP-0.3 NA.	MALS 	MISSED APPROACH: Climb to 3000 direct URZUM and on track 354° to DEEDY and hold.
----------	--	-----------------	--

D-ATIS 125.8	SAN JUAN APP CON 119.4 269.2 (WEST & SW) 120.9 290.2 (NORTH & EAST)	SAN JUAN TOWER 132.05 257.8	GND CON 121.9 348.6	CLNC DEL 126.4 284.6	CPDLC
------------------------	---	---------------------------------------	-------------------------------	--------------------------------	-------



ELEV 10	D	TDZE 9
---------	----------	--------



Procedure Turn NA	GP 3.00° TCH 46	3500	078°	1600	1600	3300	URZUM	tr 354°	DEEDY
				6.7 NM		3.3 NM		1.5 NM	
CATEGORY	A	B	C	D					
LNAV/VNAV DA	530-1¼				521 (600-1¼)				
LNAV MDA	560-½	551 (600-½)	560-1	551 (600-1)	560-1¼	551 (600-1¼)			
C CIRCLING	600-1	590 (600-1)	740-2	730 (800-2)	920-3	910 (1000-3)			

SE-3, 15 MAY 2025 to 12 JUN 2025

SE-3, 15 MAY 2025 to 12 JUN 2025