

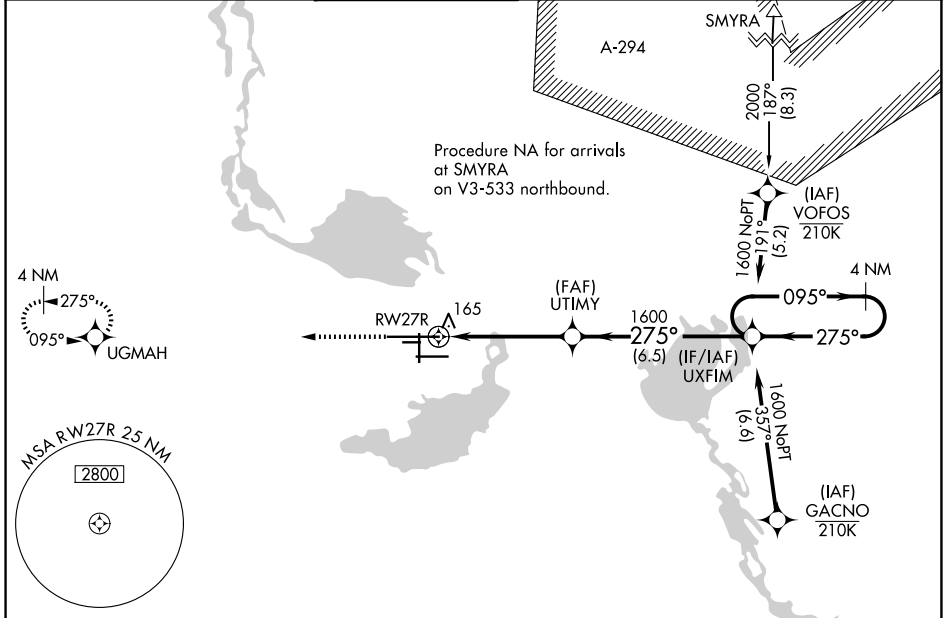
WAAS CH <b>63209</b> <b>W27A</b>	APP CRS <b>275°</b>	Rwy Ldg <b>11002</b> TDZE <b>45</b> Apt Elev <b>55</b>
--	------------------------	--

# RNAV (GPS) RWY 27R

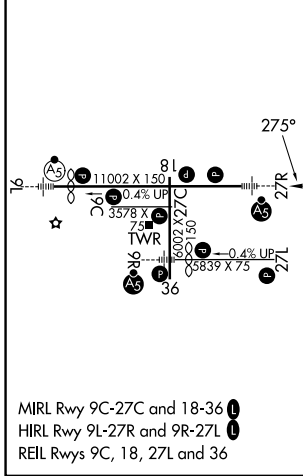
ORLANDO SANFORD INTL (SF'B)

For uncompensated Baro-VNAV systems, LNAV/VNAV NA below 0°C (32°F) or above 54°C (130°F). DME/DME RNP-0.3 NA. For inop ALS, increase LNAV/VNAV all Cats visibility to 1 1/4 SM, increase LNAV Cat C/D visibility to 1 SM.	MALSR 	MISSED APPROACH: Climb to 2000 direct UGMAH and hold.

ATIS <b>125.975</b>	ORLANDO APP CON <b>135.3 351.9 (N)</b> <b>119.775 351.9 (S)</b>	SANFORD TOWER* <b>120.3(CTAF) 0 254.35</b>	GND CON <b>121.35 254.35</b>	CLNC DEL <b>123.975</b>	CLNC DEL <b>121.35</b> (When twr closed)
------------------------	---	---	---------------------------------	----------------------------	--



ELEV 55	<b>D</b>	TDZE 45
---------	----------	---------



CATEGORY	A	B	C	D
LPV DA	245-1/2		200 (200-1/2)	
LNAV/VNAV DA	425-7/8		380 (400-7/8)	
LNAV MDA	420-1/2	375 (400-1/2)		420-5/8 375 (400-5/8)
CIRCLING	580-1	525 (600-1)		600-1 1/2 640-2 545 (600-1 1/2) 585 (600-2)

SE-3, 07 AUG 2025 to 04 SEP 2025

SE-3, 07 AUG 2025 to 04 SEP 2025