

WAAS CH 45923 W18A	APP CRS 185°	Rwy Idg 5956 TDZE 49 Apt Elev 55
--	------------------------	---

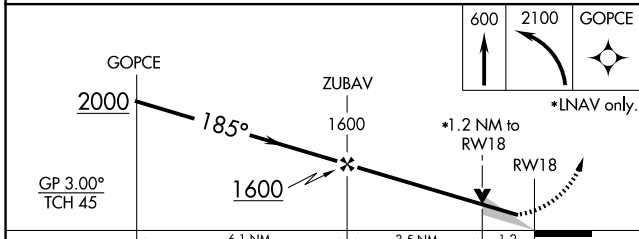
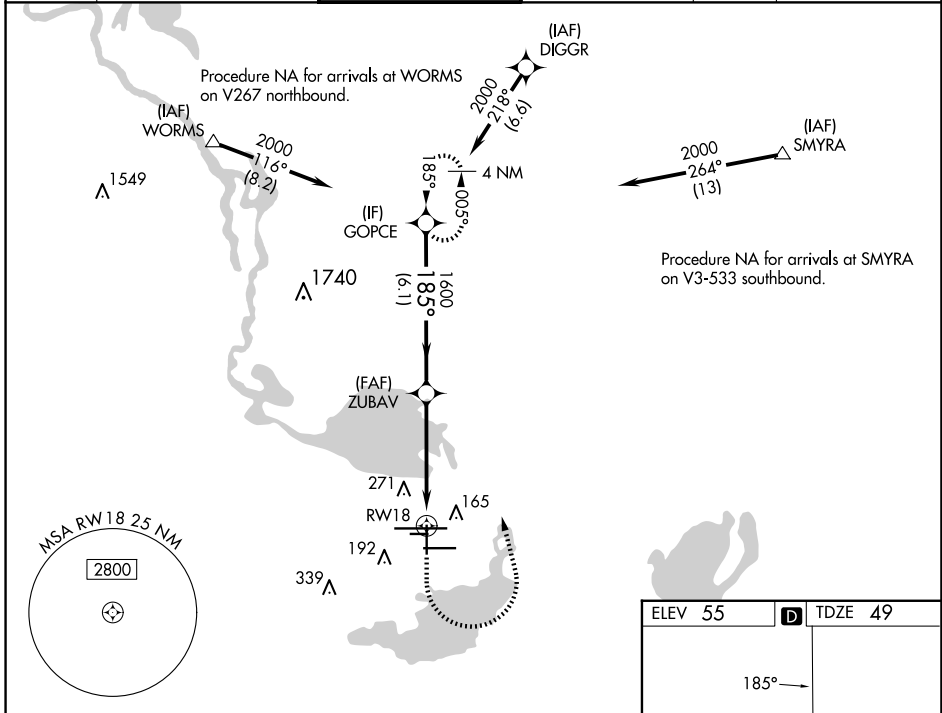
RNAV (GPS) RWY 18

ORLANDO SANFORD INTL (SF'B)

⚠ Night Landing: Rwy 27C NA. Baro-VNAV NA when using Exec altimeter setting. For unconsented Baro-VNAV systems, LNAV/VNAV NA below -1.5°C (5°F) or above 43°C (109°F). DME/DME RNP-0.3 NA. VDP NA with Exec altimeter setting. When local altimeter setting not received, use Exec altimeter setting; increase LPV DA to 292 feet; increase LNAV/VNAV DA to 342 feet and all visibilities ¼ SM; increase all MDAs 60 feet and visibility Cats C and D ¼ SM.

⚠ MISSED APPROACH: Climb to 600 then climbing left turn to 2100 direct GOPCE and hold.

ATIS 125.975	ORLANDO APP CON 135.3 351.9 (NORTH) 119.775 351.9 (SOUTH)	SANFORD TOWER* 120.3 (CTAF) 0 254.35	GND CON 121.35 254.35	CLNC DEL 123.975	CLNC DEL 121.35 (when twr closed)
------------------------	---	---	---------------------------------	----------------------------	--



ELEV 55	D	TDZE 49
---------	---	---------

MIRL Rwy 9C-27C and 18-36 **Ⓛ**
 HIRL Rwy 9L-27R and 9R-27L **Ⓛ**
 REIL Rwy 9C, 18, 27L and 36

CATEGORY	A	B	C	D
LPV DA		249-¾	200 (200-¾)	
LNAV/VNAV DA		299-¾	250 (300-¾)	
LNAV MDA	480-1 431 (500-1)		480-1¼ 431 (500-1¼)	
CIRCLING	580-1 525 (600-1)		600-1½ 545 (600-1½)	640-2 585 (600-2)

SE-3, 15 MAY 2025 to 12 JUN 2025

SE-3, 15 MAY 2025 to 12 JUN 2025