

|                                 |                        |   |
|---------------------------------|------------------------|---|
| WAAS<br>CH <b>40311</b><br>W01A | APP CRS<br><b>005°</b> | Rwy Idg<br>TDZE <b>62</b><br>Apt Elev <b>62</b> |
|---------------------------------|------------------------|---|

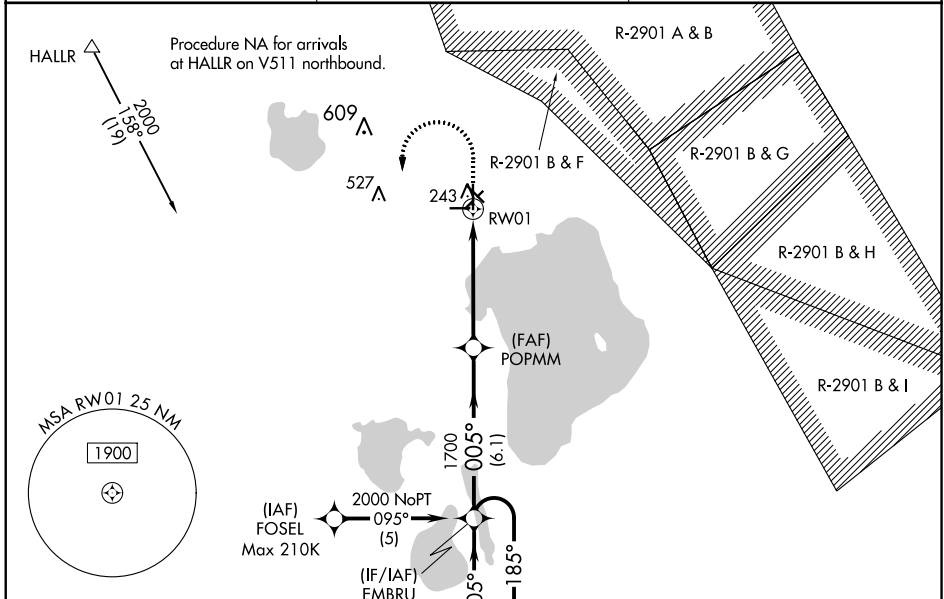
# RNAV (GPS) RWY 1

SEBRING RGNL (S/E/F)

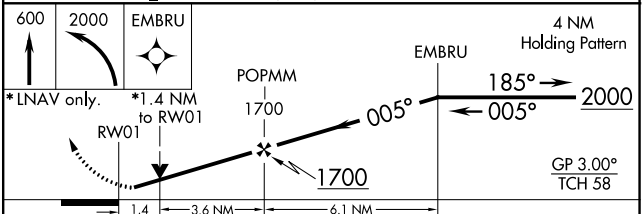
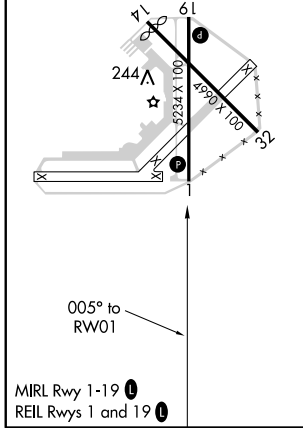
**NA** For uncompensated Baro-VNAV systems, LNAV/VNAV NA below -15°C (5°F) or above 54°C (130°F). DME/DME RNP-0.3 NA. When local altimeter setting not received, use Vero Beach Muni altimeter setting and increase all DA 122 feet and all MDA 140 feet; increase LPV all Cats visibility 1/2 mile, LNAV/VNAV all Cats visibility and LNAV Cats C and D visibility 3/8 mile, increase Circling Cat C visibility 1/2 mile and Cat D visibility 1/4 mile. Night landing: Rwy 14, 32 NA. VDP and Baro-VNAV NA when using Vero Beach altimeter. Helicopter visibility reduction below 3/4 SM NA.

**MISSED APPROACH:** Climb to 600 then climbing left turn to 2000 direct EMBRU and hold.

|                          |                                     |                                 |
|--------------------------|-------------------------------------|---------------------------------|
| AWOS-3<br><b>119.475</b> | MIAMI CENTER<br><b>127.2 317.75</b> | UNICOM<br><b>122.7 (CTAF) 0</b> |
|--------------------------|-------------------------------------|---------------------------------|



|         |         |
|---------|---------|
| ELEV 62 | TDZE 62 |
|---------|---------|



| CATEGORY     | A                         | B           | C               | D               |
|--------------|---------------------------|-------------|-----------------|-----------------|
| LPV DA       | 381-1 319 (400-1)         |             |                 |                 |
| LNAV/VNAV DA | 408-1 3/8 346 (400-1 3/8) |             |                 |                 |
| LNAV MDA     | 540-1                     | 478 (500-1) | 540-1 3/8       | 478 (500-1 3/8) |
| CIRCLING     | 600-1                     | 538 (600-1) | 600-1 1/2       | 620-2           |
|              |                           |             | 538 (600-1 1/2) | 558 (600-2)     |

SE-3, 01 MAR 2018 to 29 MAR 2018

SE-3, 01 MAR 2018 to 29 MAR 2018