

WAAS CH 86219 W08A	APP CRS 080°	Rwy Idg 7000 TDZE 97 Apt Elev 121
----------------------------------------	------------------------	--------------------------------------------------------------

RNAV (GPS) RWY 8

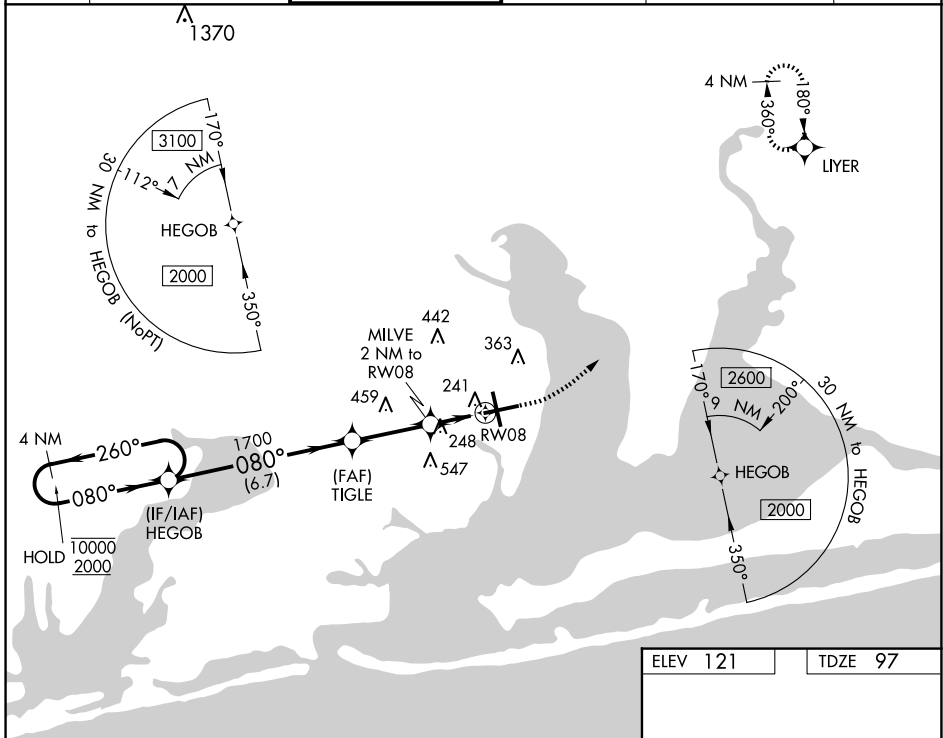
PENSACOLA INTL (PNS)

RNP APCH.

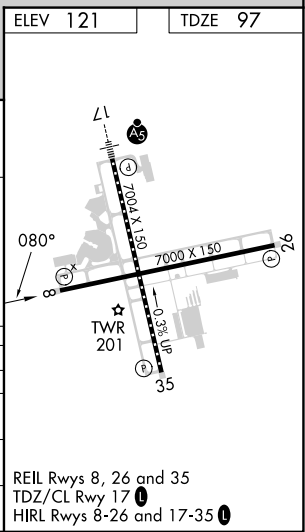
▼ Rwy 8 helicopter visibility reduction below 3/4 SM NA. For uncompensated Baro-VNAV systems, LNAV/VNAV NA below 1°C or above 54°C.
▲ CAUTION: Intensive VFR student training in vicinity of airport.

MISSED APPROACH: Climb to 600 then climbing left turn to 2200 direct LIYER and hold.

ATIS 121.25	PENSACOLA APP CON 119.0 269.375	PENSACOLA TOWER ★ 119.9 (CTAF) 0 257.8	GND CON 121.9 348.6	CLNC DEL 123.725 256.875	UNICOM 122.95
-----------------------	-------------------------------------------	--------------------------------------------------	-------------------------------	------------------------------------	-------------------------



4 NM Holding Pattern HEGOB		600		2200		LIYER	
10000 ← 260°		TIGLE 1700		*LNAV only.			
2000 → 080°		MILVE 2 NM to RW08		*780			
GP 3.00° TCH 55		*1.3 NM to RW08		RW08			
		6.7 NM		2.9 NM		0.7 NM	
						1.3 NM	
CATEGORY	A	B	C	D			
LPV DA	347-1		250 (300-1)				
LNAV/VNAV DA	402-1		305 (300-1)				
LNAV MDA	560-1 463 (500-1)		560-1 3/8 463 (500-1 3/8)				
CIRCLING	580-1 459 (500-1)		680-1 559 (600-1)		860-2 739 (800-2)		860-2 1/4 739 (800-2 1/4)



SE-3, 15 MAY 2025 to 12 JUN 2025

SE-3, 15 MAY 2025 to 12 JUN 2025