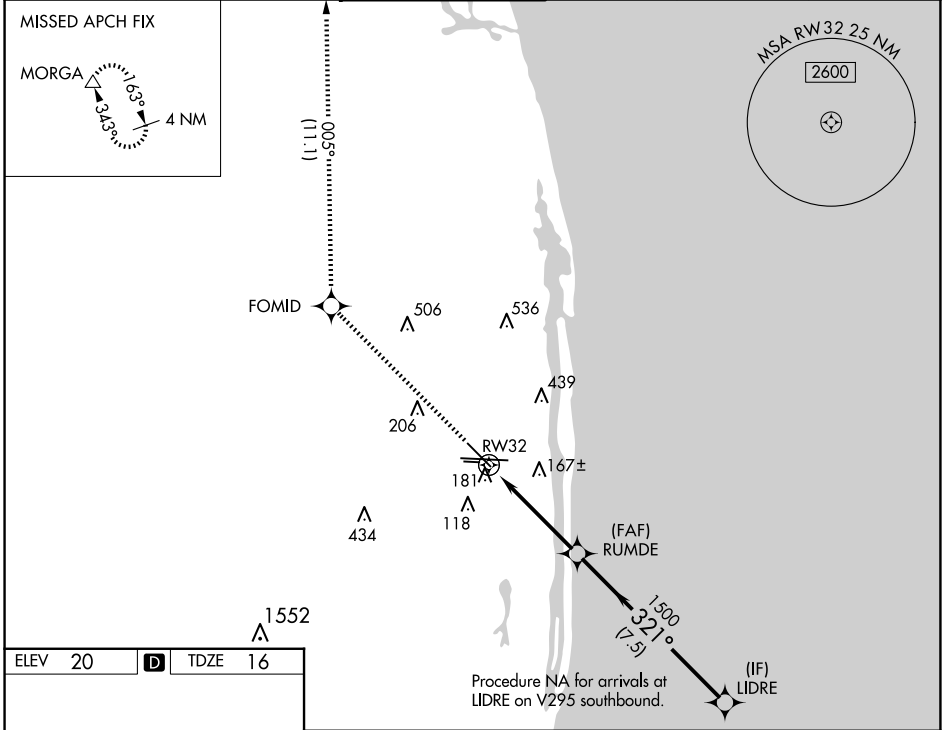


WAAS CH 62903 W32A	APP CRS 321°	Rwy Idg TDZE 16 Apt Elev 20	6513
--	------------------------	---	-------------

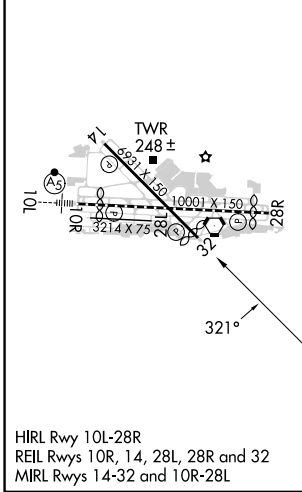
RNAV (GPS) Y RWY 32

PALM BEACH INTL (PBI)

RNP APCH - GPS.			MISSED APPROACH: Climb to 3000 direct FOMID and on track 005° to MORGA and hold.		
<p>▼ Circling to Rwy 10L NA at night. Rwy 32 helicopter visibility reduction below 3/4 SM NA. ▲ For uncompensated Baro-VNAV systems, LNAV/VNAV NA below 6°C or above 54°C.</p>					
D-ATIS 123.75	PALM BEACH APP CON 128.3 317.4	PALM BEACH TOWER 119.1 257.8	GND CON 121.9 284.6	CLNC DEL 121.6 284.6	CPDLC



ELEV 20	D	TDZE 16
---------	----------	---------



3000	FOMID	tr 005°	MORGA	VGSI and RNAV glidepath not coincident (VGSI Angle 3.25/TCH 57).
				LIDRE
			RUMDE	
		1.1 NM to RW32	1500	321°
			1500	
				3000
		1.1 NM	3.4 NM	7.5 NM
CATEGORY	A	B	C	D
LPV DA	266-3/4		250 (300-3/4)	
LNAV/VNAV DA	342-1		326 (400-1)	
LNAV MDA	440-1	424 (500-1)	440-1 1/4	424 (500-1 1/4)
C CIRCLING	560-1	540 (600-1)	740-2 720 (800-2)	780-2 1/2 760 (800-2 1/2)

GP 3.00° TCH 57

SE-3, 15 MAY 2025 to 12 JUN 2025

SE-3, 15 MAY 2025 to 12 JUN 2025