

WAAS CH 58125 W25A	APP CRS 253°	Rwy Ldg TDZE Apt Elev	6004 113 113
--	------------------------	-----------------------------	---

RNAV (GPS) RWY 25

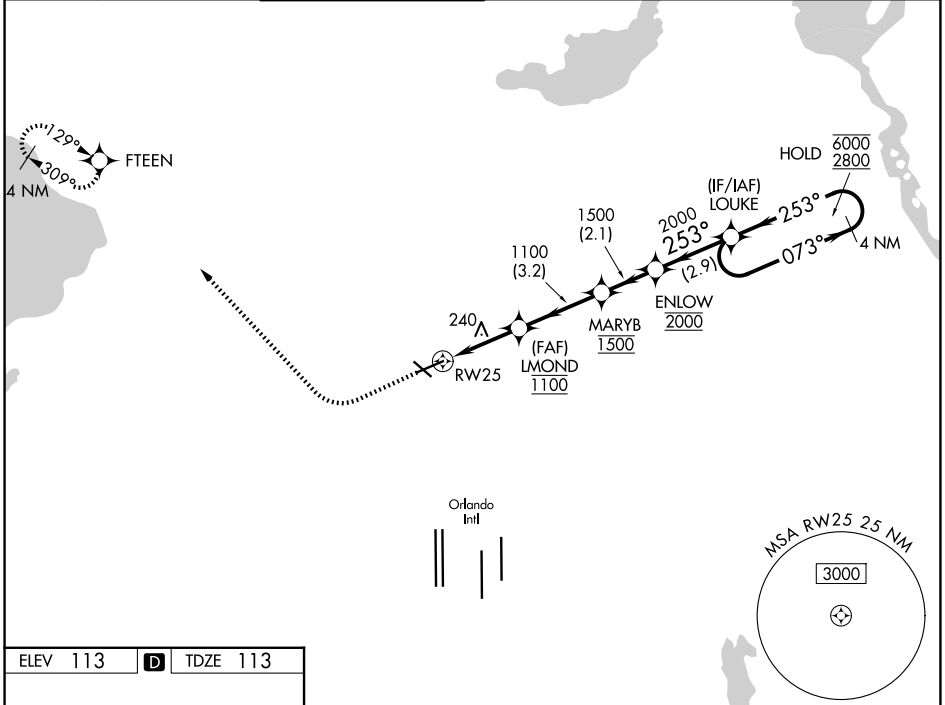
ORLANDO EXEC (ORL)

RNP APCH - GPS

⚠ Circling Rwy 31 NA at night. For uncompensated Baro-VNAV systems, LNAV/VNAV NA below 2°C or above 54°C. In minimum visibility conditions, bright lights on highway ½ mile south of airport may be mistaken for runway lights.

MISSED APPROACH: Climb to 600 then climbing right turn to 1700 direct FTEEN and hold.

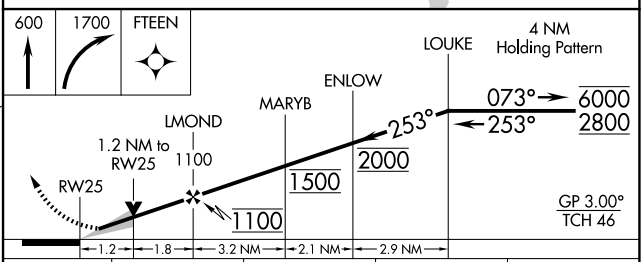
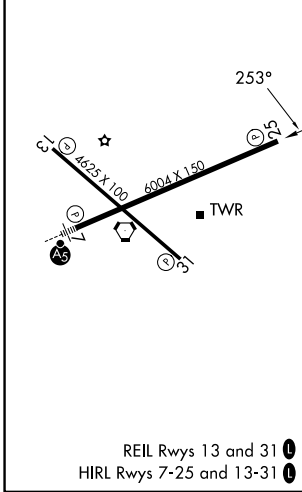
ATIS 127.25	ORLANDO APP CON 124.8 351.9	EXECUTIVE TOWER ★ 118.7 (CTAF) 239.0	GND CON 121.4 239.0	CLNC DEL 128.45	CLNC DEL 125.225 (When twr closed)	UNICOM 122.95
-----------------------	---------------------------------------	--	-------------------------------	---------------------------	---	-------------------------



SE-3, 07 AUG 2025 to 04 SEP 2025

SE-3, 07 AUG 2025 to 04 SEP 2025

ELEV 113	D	TDZE 113
----------	----------	----------



CATEGORY	A	B	C	D
LPV DA		313-¾	200 (200-¾)	
LNAV/VNAV DA		390-⅞	277 (300-⅞)	
LNAV MDA	500-1	387 (400-1)	500-1¼	387 (400-1¼)
CIRCLING	580-1	680-1	860-2¼	860-2½
	467 (500-1)	567 (600-1)	747 (800-2¼)	747 (800-2½)