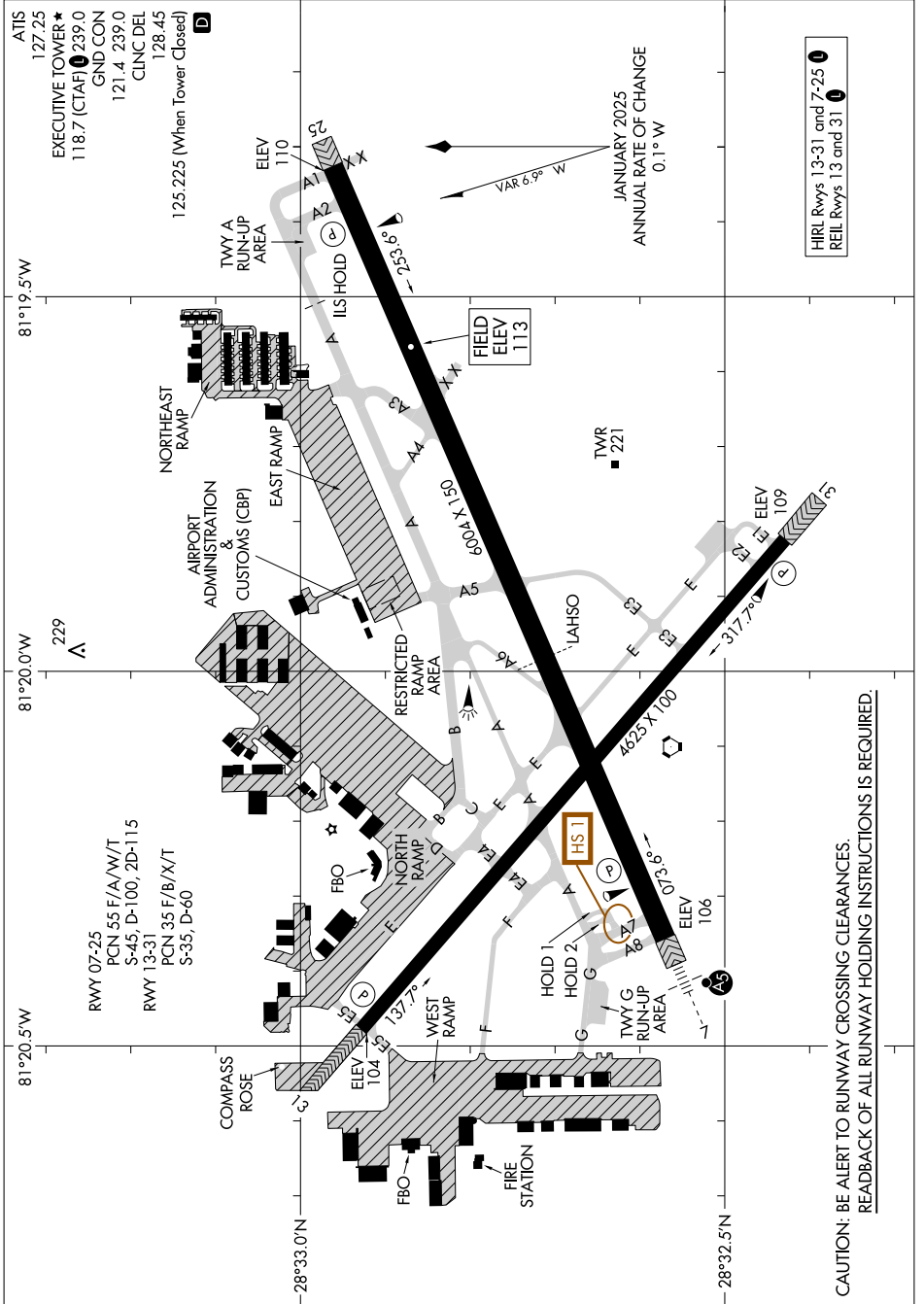


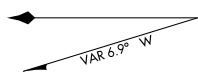
AIRPORT DIAGRAM

AL-305 (FAA)

EXEC (O.R.L.)
ORLANDO, FLORIDA



ATIS 127.25
 EXECUTIVE TOWER ★ 118.7 (CTAF) 239.0
 GND CON 121.4 239.0
 CLNC DEL 128.45
 125.225 (When Tower Closed)



HIRL Rwy 13-31 and 7-25
 REIL Rwy 13 and 31

SE-3, 15 MAY 2025 to 12 JUN 2025

CAUTION: BE ALERT TO RUNWAY CROSSING CLEARANCES.
 READBACK OF ALL RUNWAY HOLDING INSTRUCTIONS IS REQUIRED.

SE-3, 15 MAY 2025 to 12 JUN 2025

AIRPORT DIAGRAM

ORLANDO, FLORIDA
EXEC (O.R.L.)