

WAAS CH 62922 W27A	APP CRS 273°	Rwy Idg TDZE Apt Elev	8002 8 8
--	------------------------	-----------------------------	-------------------------------------

RNAV (GPS) RWY 27R

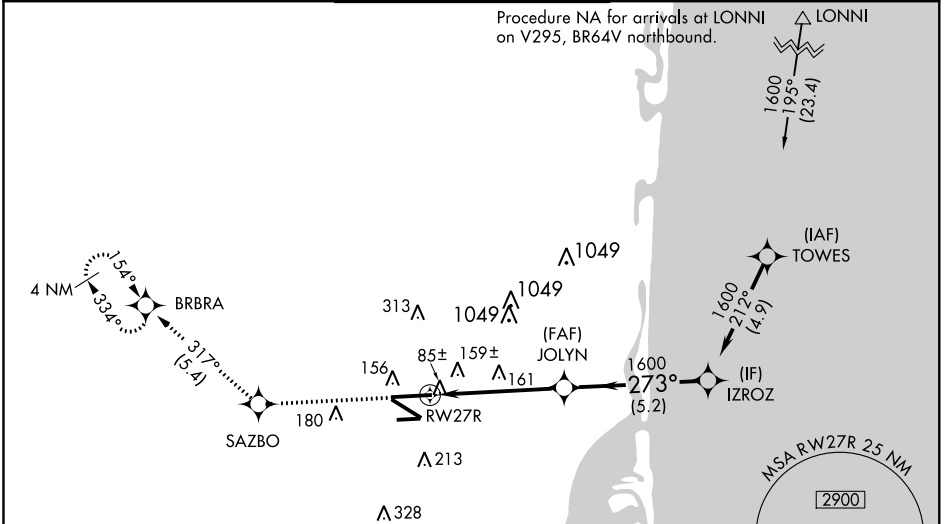
OPA-LOCKA EXECUTIVE (OPF)

Baro-VNAV NA when using Miami Intl altimeter setting. For uncompensated Baro-VNAV systems, LNAV/VNAV NA below 5°C (41°F) or above 54°C (130°F). DME/DME RNP-0.3 NA. When local altimeter setting not received, use Miami Intl altimeter setting and increase all DA/MDA 20 feet. For inop MALS, increase LPV all Cats visibility to 7/8 mile, LNAV/VNAV all Cats to 1 3/8, and LNAV Cats C and D visibility to 1 1/8 mile. Helicopter visibility reduction below 3/4 SM NA.

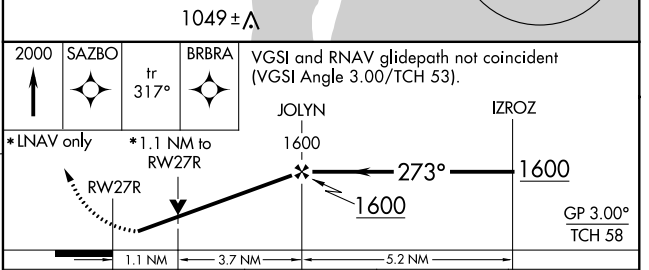
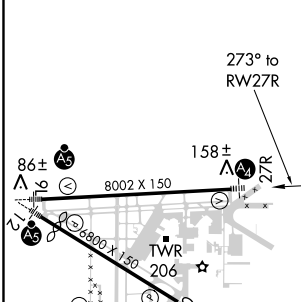
MALS
A2

MISSED APPROACH: Climb to 2000 direct SAZBO and on track 317° to BRBRA and hold.

ATIS 125.9	MIAMI APP CON 128.6 306.975	OPA LOCKA TOWER * 134.675 (CTAF) 1	GND CON 120.025	CLNC DEL 119.2
----------------------	---------------------------------------	---	---------------------------	--------------------------



ELEV 8	D	TDZE 8
--------	----------	--------



CATEGORY	A	B	C	D
LPV DA		291-3/4	283 (300-3/4)	
LNAV/VNAV DA		413-1	405 (500-1)	
LNAV MDA	420-3/4	412 (500-3/4)	420-1	412 (500-1)
CIRCLING	540-1	532 (600-1)	540-1 1/2 532 (600-1 1/2)	560-2 552 (600-2)

MIRL Rwy 9R-27L
HIRL Rwy 9L-27R and 12-30 **1**

SE-3, 09 NOV 2017 to 07 DEC 2017

SE-3, 09 NOV 2017 to 07 DEC 2017