

WAAS CH <b>69522</b> <b>W12A</b>	APP CRS <b>128°</b>	Rwy Idg TDZE Apt Elev	<b>6000</b> <b>8</b> <b>8</b>
--	------------------------	-----------------------------	-------------------------------------

# RNAV (GPS) RWY 12

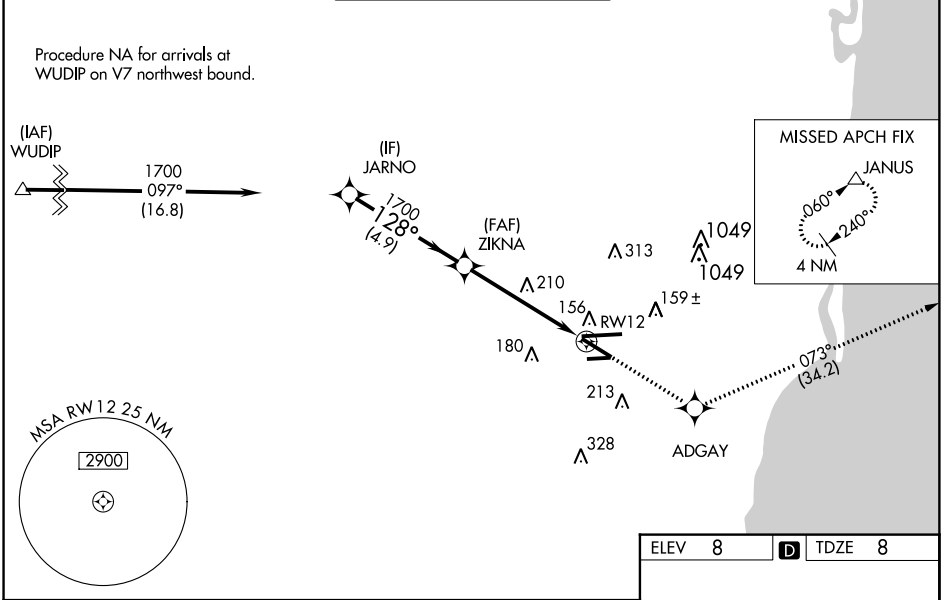
OPA-LOCKA EXECUTIVE (OPF)

**⚠** Baro-VNAV NA when using Miami Intl altimeter setting. For uncompensated Baro-VNAV systems, LNAV/VNAV NA below -15°C (5°F) or above 43°C (109°F). Helicopter visibility reduction below 3/4 SM NA. DME/DME RNP-0.3 NA. VDP NA with Miami Intl altimeter setting. When local altimeter setting not received, use Miami Intl altimeter setting and increase all DA/MDA 20 feet. Inoperative table does not apply. For inoperative MALSR, increase LNAV/VNAV all Cats visibility and LNAV Cats A and B to 1 mile and LNAV Cats C and D visibility to 1 1/8 miles. For inoperative MALSR, when using Miami Intl altimeter setting, increase LNAV/VNAV all Cats visibility and LNAV Cats A and B visibility to 1 mile.

**MALSR**

**MISSED APPROACH:** Climb to 2000 direct ADGAY and on track 073° to JANUS and hold.

ATIS <b>125.9</b>	MIAMI APP CON <b>128.6 306.975</b>	OPA LOCKA TOWER ★ <b>134.675</b> (CTAF)	GND CON <b>120.025</b>	CLNC DEL <b>119.2</b>
----------------------	---------------------------------------	--	---------------------------	--------------------------



	JARNO	ZIKNA	ADGAY	JANUS
	1700	1700	2000	1r 073°
	*LNAV only			
	*1.5 NM to RWY12			
	RWY 12			
	GP 3.00° TCH 53			
	4.9 NM      3.7 NM      1.5 NM			
CATEGORY	A	B	C	D
LPV DA		208-3/4	200 (200-3/4)	
LNAV/VNAV DA		320-3/4	312 (400-3/4)	
LNAV MDA	520-3/4	512 (600-3/4)	520-1	512 (600-1)
CIRCLING	540-1	532 (600-1)	540-1 1/2 532 (600-1 1/2)	560-2 552 (600-2)

ELEV 8	TDZE 8
--------	--------

MIRL Rwy 9R-27L  
HIRL Rwy 9L-27R and 12-30

SE-3, 14 SEP 2017 to 12 OCT 2017

SE-3, 14 SEP 2017 to 12 OCT 2017