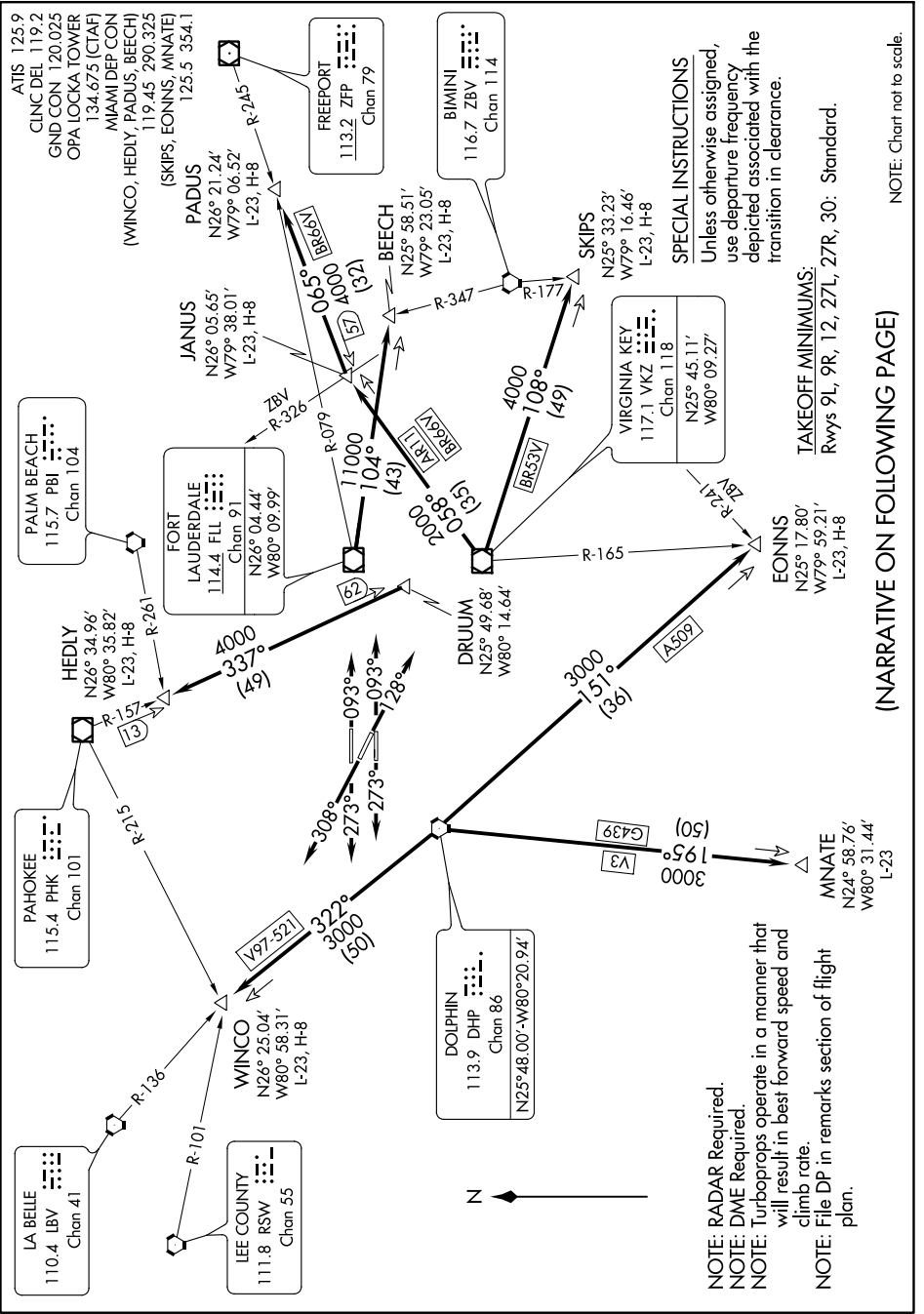


MIAMI FIVE DEPARTURE

SE-3. 04 JAN 2018 to 01 FEB 2018



NOTE: RADAR Required.
NOTE: DME Required.
NOTE: Turboprops operate in a manner that will result in best forward speed and climb rate.
NOTE: File DP in remarks section of flight plan.

SPECIAL INSTRUCTIONS
 Unless otherwise assigned, use departure frequency depicted associated with the transition in clearance.

TAKEOFF MINIMUMS:
 Rwy's 9L, 9R, 12, 27L, 27R, 30: Standard.

(NARRATIVE ON FOLLOWING PAGE)

NOTE: Chart not to scale.

MIAMI FIVE DEPARTURE

SE-3. 04 JAN 2018 to 01 FEB 2018