

VORTAC OMN <b>112.6</b> Chan <b>73</b>	APP CRS <b>161°</b>	Rwy Idg TDZE Apt Elev	<b>3704</b> <b>27</b> <b>29</b>
--	------------------------	-----------------------------	---------------------------------------

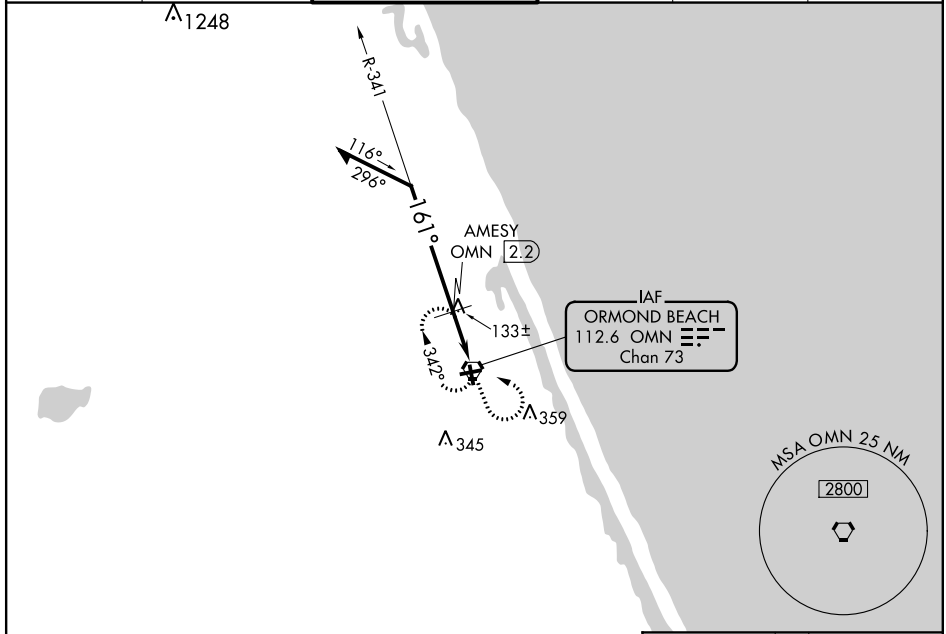
# VOR RWY 17

ORMOND BEACH MUNI (OMN)

**NA** When local altimeter setting not received, use Daytona Beach Intl altimeter setting and increase all MDA 20 feet and increase S-17 Cat C visibility to 1 3/4 mile. Helicopter visibility reduction below 3/4 SM NA.

**MISSED APPROACH:** Climb to 1000 then climbing left turn to 1600 direct OMN VORTAC and hold.

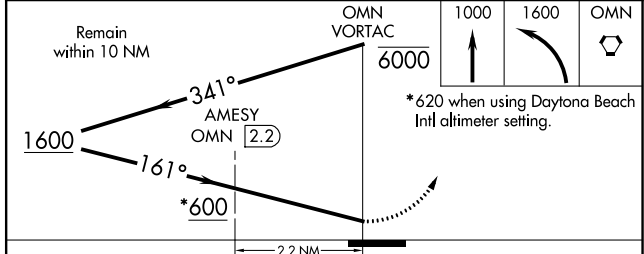
ATIS <b>118.475</b>	DAYTONA APP CON <b>125.8 269.075</b>	<b>ORMOND BEACH TOWER*</b> <b>119.075 (CTAF) 0</b>	GND CON <b>121.625</b>	CLNC DEL <b>121.625</b>	UNICOM <b>123.05</b>
------------------------	---	---	---------------------------	----------------------------	-------------------------



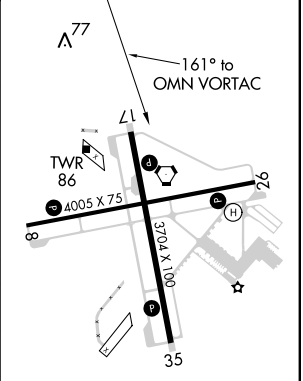
SE-3, 17 AUG 2017 to 14 SEP 2017

SE-3, 17 AUG 2017 to 14 SEP 2017

ELEV <b>29</b>	TDZE <b>27</b>
----------------	----------------



ELEV <b>29</b>	TDZE <b>27</b>
----------------	----------------



CATEGORY	A	B	C	D
S-17	600-1	573 (600-1)	600-1 3/8 573 (600-1 3/8)	NA
<b>C</b> CIRCLING	600-1	571 (600-1)	740-2 712 (800-2)	NA
<b>AMESY FIX MINIMUMS</b>				
S-17	480-1	453 (500-1)	480-1 3/8 453 (500-1 3/8)	NA
<b>C</b> CIRCLING	500-1	472 (500-1)	740-2 712 (800-2)	NA

REIL Rwy 8, 17, 26, and 35 **0**  
 MIRL Rwy 8-26 and 17-35 **0**