

KEY WEST, FLORIDA

# VOR/DME or TACAN Z RWY 8

EYW VORTAC <b>113.5</b> Chan <b>82</b>	APCH CRS <b>098°</b>	Rwy Idg <b>10,001</b> THRE <b>4</b> Arprt Elev <b>6</b>
--	-------------------------	---

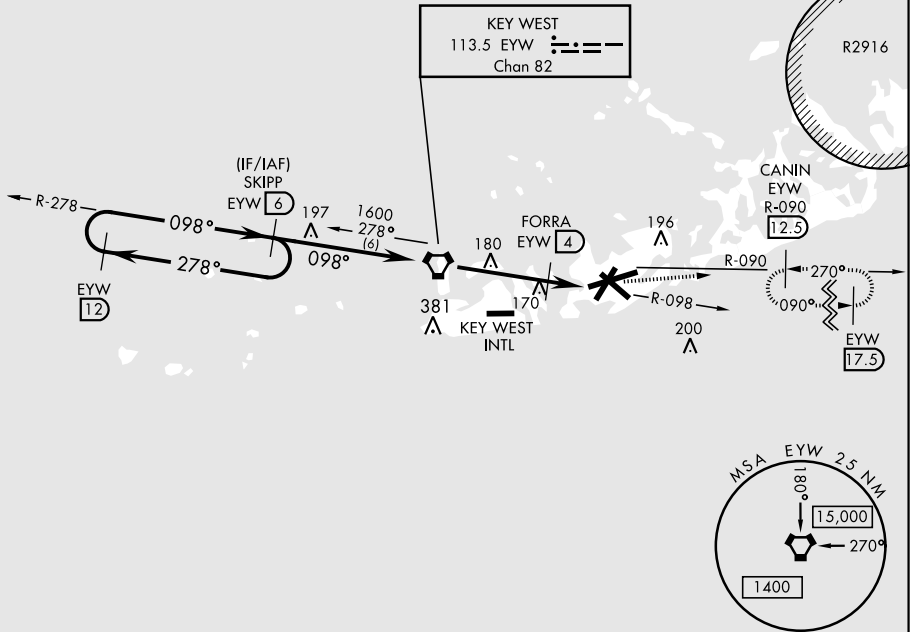
AL-214 [USN]

KEY WEST NAS (BOCA CHICA FLD) (KNQX)

		MISSED APPROACH: Climbing left turn to 1600 to intercept EYW R-090 to CANIN and hold.			
ATIS ★ <b>307.025</b>	NAVY KEY WEST APP CON <b>124.025 313.7</b>	NAVY KEY WEST TOWER ★ <b>118.575 340.25</b>	GND CON <b>121.7 336.45</b>	CLNC DEL <b>121.2 357.4</b>	ASR/PAR

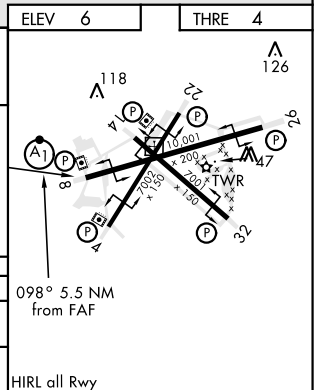
CAUTION: The final approach course intersects the runway extended centerline 966' from threshold.

CAUTION: Balloon with strobe light on unmarked cable to 14,000 in R-2916.



EMERG SAFE ALT 100 NM 15,000

	SKIPP R-278 6	VORTAC	1600 EYW R-090	CANIN EYW 12.5
	1600 098° →	← 278°	1600 098° →	
CAUTION: The final descent angle is not coincident with the VGSI				
2.64° TCH 44				
			4.3	ECIPA 5.3
			480	
			4 NM	1.5 NM
CATEGORY	A	B	C	D
S-8	440-1	436 (500-1)	440-1 ¼	436 (500-1 ¼)
CIRCLING	460-1 454 (500-1)	500-1 494 (500-1)	500-1 ½ 494 (500-1 ½)	560-2 554 (600-2)



KEY WEST, FLORIDA  
Amdt 2 10DEC15

24°34'N-81°41'W KEY WEST NAS (BOCA CHICA FLD) (KNQX)

# VOR/DME or TACAN Z RWY 8

SE-3, 06 DEC 2018 to 03 JAN 2019

SE-3, 06 DEC 2018 to 03 JAN 2019