

KEY WEST, FLORIDA

# TACAN RWY 26

TACAN NQX Chan <b>78</b>	APCH CRS <b>274°</b>	Rwy ldg <b>10,001</b> THRE Arpt Elev <b>6</b>
-----------------------------	-------------------------	-----------------------------------------------------

AL-214 [USN]

KEY WEST NAS (BOCA CHICA FLD) (KNQX)

† MISSED APPROACH: Climbing left turn to 1600 to intercept NQX R-094 to CANIN (NQX R-094/6 DME) and hold.

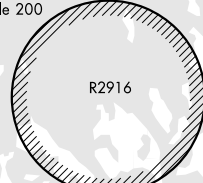
ATIS ★ <b>307.025</b>	NAVY KEY WEST APP CON <b>124.025 313.7</b>	NAVY KEY WEST TOWER ★ <b>118.575 340.25</b>	GND CON <b>121.7 336.45</b>	CLNC DEL <b>121.2 357.4</b>	ASR/PAR
--------------------------	-----------------------------------------------	------------------------------------------------	--------------------------------	--------------------------------	---------

CAUTION: Vertical descent angle and VGS1 angle are not coincident.

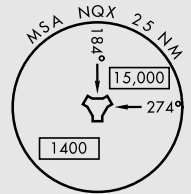
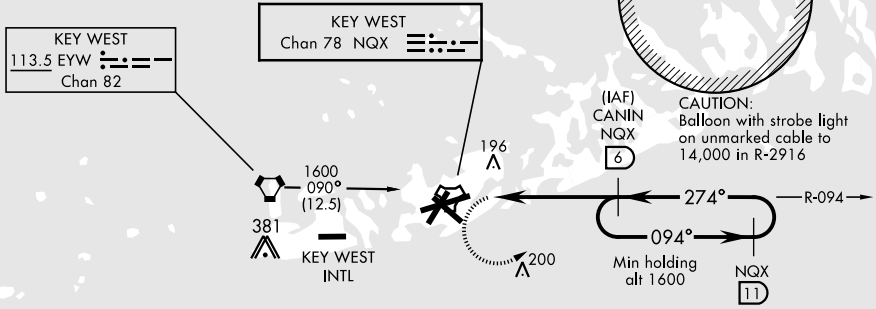
† CAUTION: Missed Approach  
Minimum Climb Rate to 1600

Knots	60	120	180	240	300	360
V/V(fpm)	280	560	840	1120	1400	1680

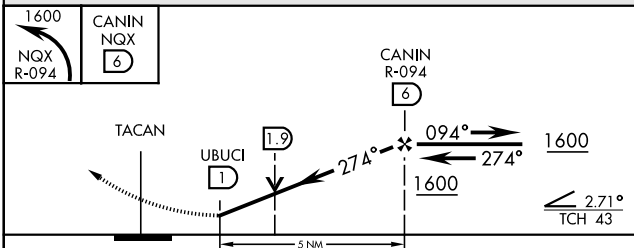
Controlling Obstacle 200



(IAF) CANIN NQX [6]  
CAUTION: Balloon with strobe light on unmarked cable to 14,000 in R-2916



EMEG SAFE ALT 100 NM 15,000



ELEV 6	THRE 4
--------	--------

HIRL all Rwy

KEY WEST, FLORIDA

24°34'N-81°41'W

KEY WEST NAS (BOCA CHICA FLD) (KNQX)

Amdt 2 10DEC15

# TACAN RWY 26

SE-3, 06 DEC 2018 to 03 JAN 2019

SE-3, 06 DEC 2018 to 03 JAN 2019