

KEY WEST, FLORIDA

HI-TACAN Z RWY 8

VORTAC EYW 113.5 Chan 82	APCH CRS 098°	Rwy ldg 10,001 THRE 4 Arpt Elev 6
--------------------------------	------------------	---

JAL-214 [USN]

KEY WEST NAS (BOCA CHICA FLD) (KNQX)

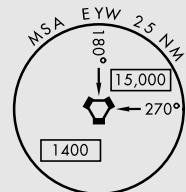
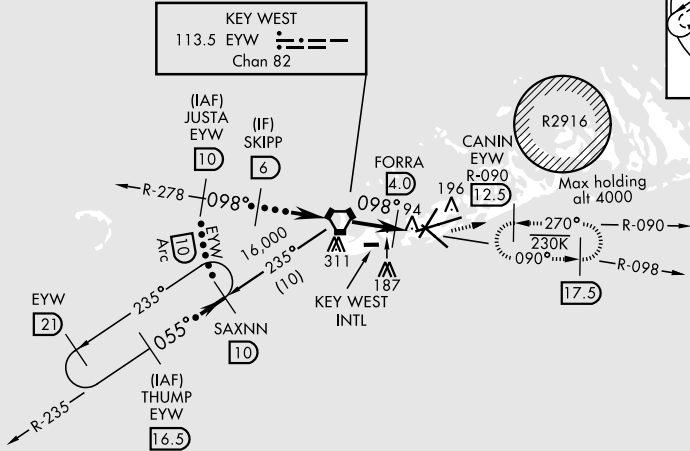
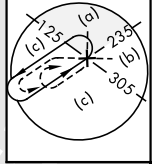
ALSF-1
A1

MISSED APPROACH: Climbing left turn to 1600 to intercept EYW R-090 to CANIN and hold.

ATIS * 307.025	NAVY KEY WEST APP CON 124.025 313.7	NAVY KEY WEST TOWER * 118.575 340.25	GND CON 121.7 336.45	CLNC DEL 121.2 357.4	ASR/PAR
-------------------	--	---	-------------------------	-------------------------	---------

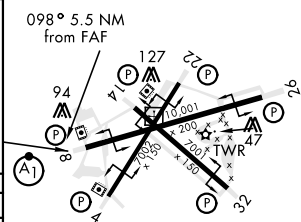
CAUTION: The final descent angle is not coincident with the VGSI. CAUTION: Balloon with strobe light on unmarked cable to 14,000' in R-2916.

CAUTION: The final approach course intersects the extended runway centerline 966 feet from threshold.



EMERG SAFE ALT 100 NM 15,000

	†Or as directed by ATC		1600 EYW R-090	CANIN EYW 12.5	ELEV 6	THRE 4
	THUMP 16.5	SAXNN R-235 10	JUSTA R-278 10	SKIPP 6	VORTAC 4.3	FORRA 4.0
CATEGORY	C		D	E		
S-8	440-1 1/4		436	(500-1 1/4)		
CIRCLING	500-1 1/2 494 (500-1 1/2)		560-2	554 (600-2)		



HIRL all Rwy

KEY WEST, FLORIDA
Amdt 2 10DEC15

24°34'N-81°41'W KEY WEST NAS (BOCA CHICA FLD) (KNQX)

HI-TACAN Z RWY 8

SE-3, 06 DEC 2018 to 03 JAN 2019

SE-3, 06 DEC 2018 to 03 JAN 2019