

WAAS CH <b>58312</b> <b>W25A</b>	APP CRS <b>251°</b>	Rwy Idg TDZE Apt Elev	<b>5008</b> <b>5</b> <b>5</b>
----------------------------------------	------------------------	-----------------------------	-------------------------------------

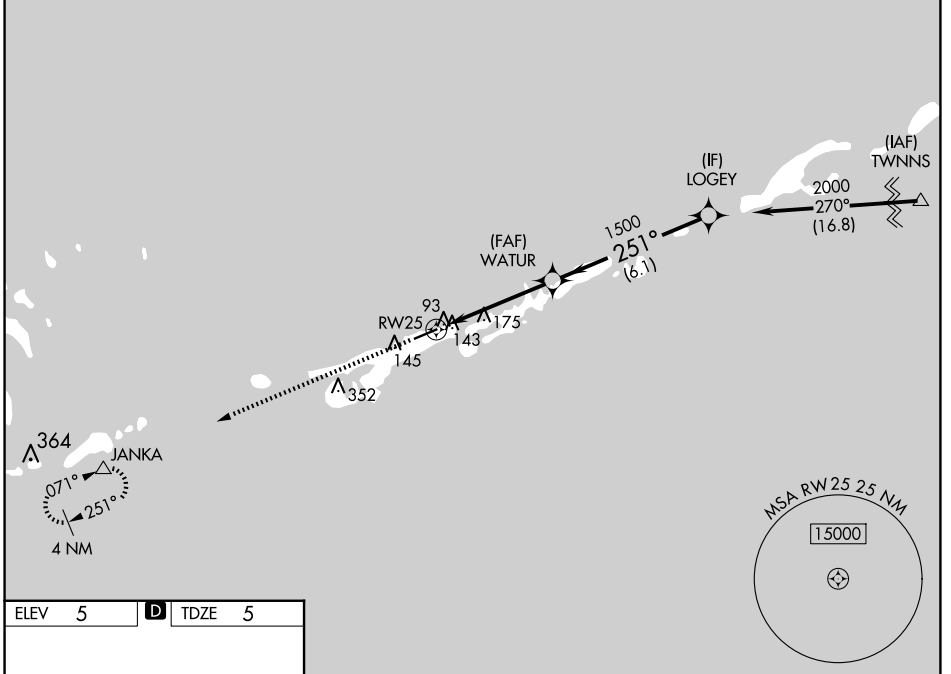
# RNAV (GPS) RWY 25

THE FLORIDA KEYS MARATHON INTL (MTH)

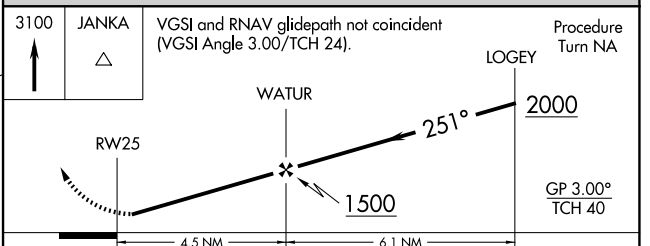
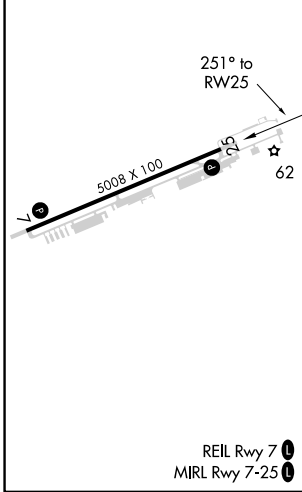
**⚠** DME/DME RNP-0.3 NA. Helicopter visibility reduction below 3/4 SM NA. When local altimeter setting not received, use Key West Intl altimeter setting: increase LPV DA to 408 feet, LNAV/VNAV DA to 497 feet and all MDAs 100 feet; increase LPV all Cats visibility 1/2 SM, increase LNAV/VNAV all Cats, LNAV Cat C/D, and Circling Cat C visibility 1/4 SM, and Circling Cat D visibility 1/2 SM. Baro-VNAV NA below -1.5°C (5°F) and above 48°C (118°F). Baro-VNAV NA when using Key West Intl altimeter setting.

**⚠** MISSED APPROACH: Climb to 3100 direct JANKA and hold.

ASOS <b>135.525</b>	MIAMI CENTER <b>133.5 306.9</b>	UNICOM <b>122.975 (CTAF) 0</b>
------------------------	------------------------------------	-----------------------------------



ELEV 5	<b>D</b>	TDZE 5
--------	----------	--------



CATEGORY	A	B	C	D
LPV DA	315-1 310 (400-1)			
LNAV/VNAV DA	404-1 1/2 399 (400-1 1/2)			
LNAV MDA	440-1	435 (500-1)	440-1 1/4 435 (500-1 1/4)	440-1 1/2 435 (500-1 1/2)
CIRCLING	460-1 455 (500-1)	480-1 475 (500-1)	620-1 3/4 615 (700-1 3/4)	660-2 655 (700-2)

SE-3, 15 MAY 2025 to 12 JUN 2025

SE-3, 15 MAY 2025 to 12 JUN 2025