

MIAMI, FLORIDA

AL-257 (FAA)

24137

| | | |
|--|------------------------|---|
| WAAS CH 86903 W26A | APP CRS 272° | Rwy Idg 8600 TDZE 9 Apt Elev 9 |
|--|------------------------|---|

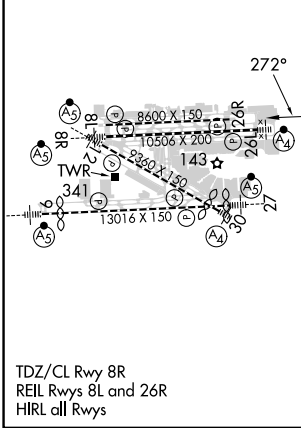
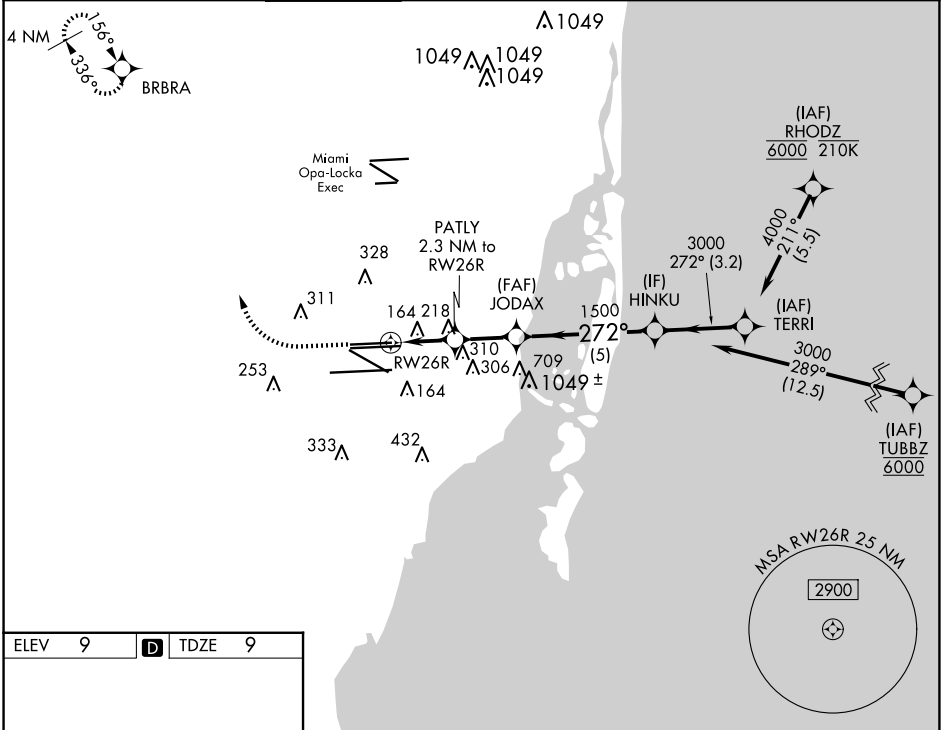
RNAV (GPS) RWY 26R

MIAMI INTL (MIA)

| | |
|-----------------|---|
| RNP APCH - GPS. | MISSED APPROACH: Climb to 800 then climbing right turn to 4000 direct BRBRA and hold, continue climb-in-hold to 4000. |
|-----------------|---|

Simultaneous approach authorized. LNAV procedure NA during simultaneous operations.
Use of FD or AP required during simultaneous operations.
For uncompensated Baro-VNAV systems, LNAV/VNAV NA below 9°C or above 54°C.

| | | | | | |
|---|---------------------|--------------------|--|-------------------------------|-------|
| D-ATIS | MIAMI APP CON | MIAMI TOWER | GND CON | CLNC DEL | CPDLC |
| ARR 119.15 DEP 133.675 | 124.85 322.3 | 118.3 256.9 | 121.8 (Rwys 8L/R, 12, 26L/R) 127.5 (Rwys 9, 27, 30) | 348.6 135.35 | |



| | | | | | | |
|-----------------------|--------|-----------------|--------------|--------------|-----------------|--|
| 800 | 4000 | BRBRA | | | | |
| PATLY 2.3 NM to RW26R | | JODAX 1500 | HINKU | TERRI | | |
| RW26R | | 1.3 NM to RW26R | 3000 | 4000 | GP 3.00° TCH 60 | |
| 1.3 | | 1 | 2.2 | 5 | 3.2 | |
| CATEGORY | A | B | C | D | | |
| LPV DA | 265-¾ | | 256 (300-¾) | | | |
| LNAV/VNAV DA | 432-1¼ | | 423 (500-1¼) | | | |
| LNAV MDA | 480-1 | 471 (500-1) | 480-1¾ | 471 (500-1¾) | | |

MIAMI, FLORIDA
Amdt 5 14JUL22

25°48'N-80°17'W

RNAV (GPS) RWY 26R

SE-3, 15 MAY 2025 to 12 JUN 2025