

LOC/DME I-OJP <b>110.7</b> Chan <b>44</b>	APP CRS <b>005°</b>	Rwy Idg <b>11601</b> TDZE <b>92</b> Apt Elev <b>96</b>
---	------------------------	--

# ILS RWY 36R (CAT II & III)

ORLANDO INTL (MCO)

RADAR required for procedure entry. DME or RADAR required.

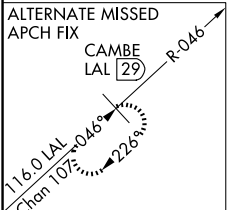
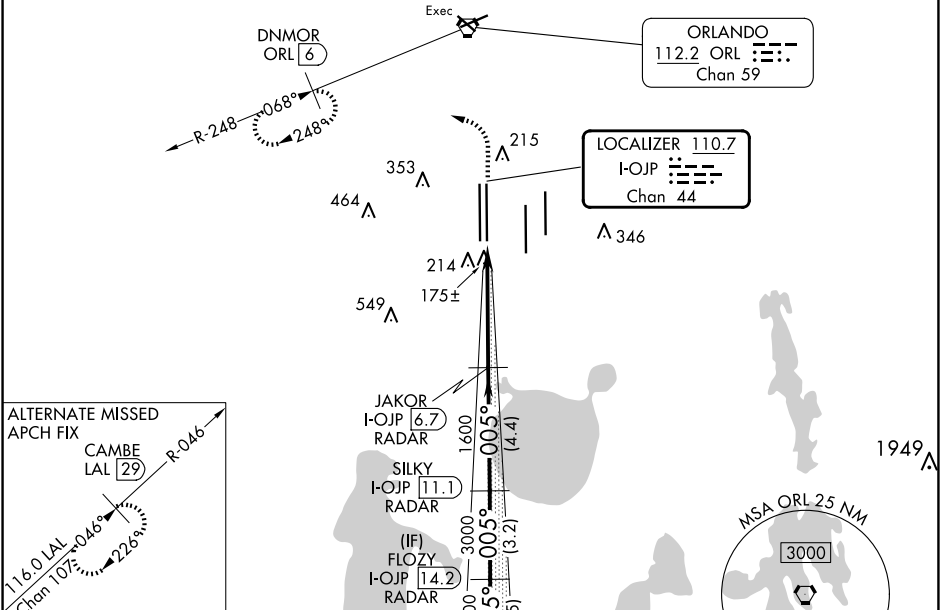
ALSF-2

MISSED APPROACH: Climb to 500 then climbing left turn to 3000 on heading 309° and ORL R-248 to DNMOR/ORL 6 DME and hold, continue climb-in-hold to 3000.

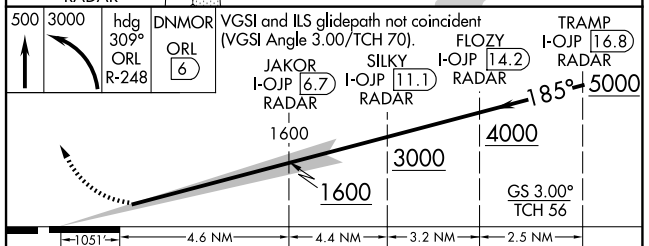
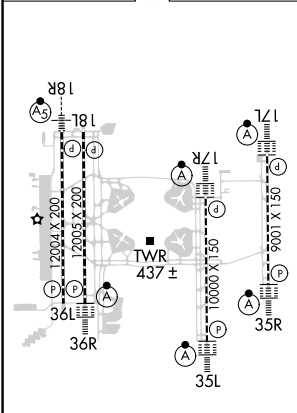
Simultaneous approach authorized.



D-ATIS ARR <b>121.25</b> DEP <b>120.525</b>	ORLANDO APP CON <b>124.8 307.0</b>	ORLANDO TOWER <b>118.45 253.5</b> (Rwys 17L-35R, 17R-35L) <b>124.3 253.5</b> (Rwys 18L-36R, 18R-36L)	GND CON <b>126.4</b> (East) <b>121.8</b> (West)	CLNC DEL <b>134.7</b> <b>341.7</b>	CPDLC
---	---------------------------------------	--	---	--	-------



ELEV 96	D	TDZE 92
---------	---	---------



CATEGORY	A	B	C	D
S-ILS 36R	CAT II RA106/12 100 DA 192			
S-ILS 36R	CAT III RVR 06			

**CATEGORY II & III ILS - SPECIAL AIRCREW & AIRCRAFT CERTIFICATION REQUIRED**

HIRL all Rwys  
REIL Rwy 36L  
TDZ/CL Rwys 17L/R, 18R,  
35L/R, and 36R

SE-3, 15 MAY 2025 to 12 JUN 2025

SE-3, 15 MAY 2025 to 12 JUN 2025