

LOC/DME I-DIZ 111.75 Chan 54(Y)	APP CRS 185°	Rwy Idg 10000 TDZE 90 Apt Elev 96
---	------------------------	--

ILS RWY 17R (CAT II)

ORLANDO INTL (MCO)

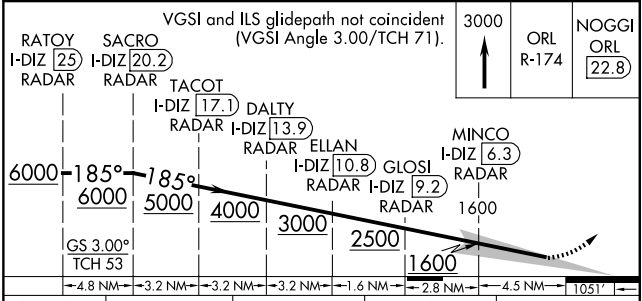
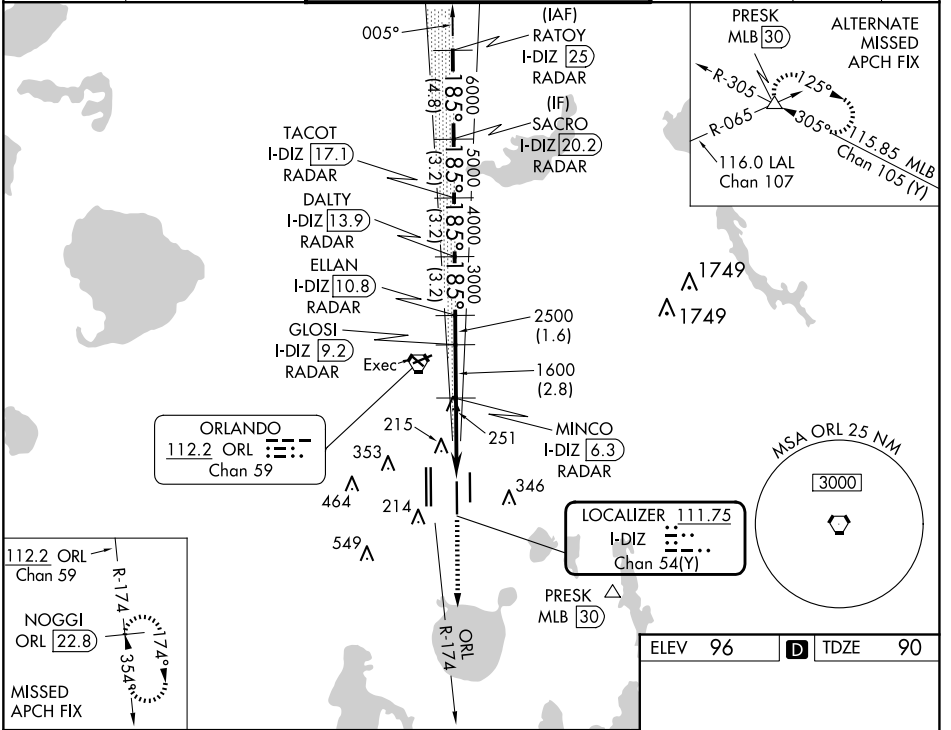
RADAR required for procedure entry. DME or RADAR required.

Simultaneous approach authorized. When using alternate missed approach, simultaneous approach NA. Bright lights on highway midway between Rwy 17L and Rwy 17R may be mistaken for runway lights.

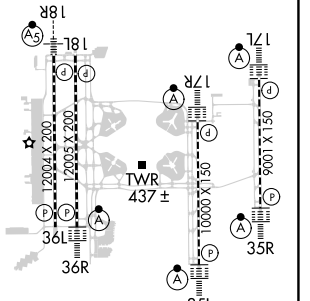
ALSIF-2

MISSED APPROACH: Climb to 3000 on ORL VORTAC R-174 to NOGGI/ ORL 22.8 DME and hold.

D-ATIS ARR 121.25 DEP 120.525	ORLANDO APP CON 124.8 307.0	ORLANDO TOWER 118.45 253.5 (Rwys 17L-35R, 17R-35L) 124.3 253.5 (Rwys 18L-36R, 18R-36L)	GND CON 126.4 (East) 121.8 (West)	CLNC DEL 134.7 341.7	CPDLC
---	---------------------------------------	--	---	--	-------



ELEV 96	D	TDZE 90
----------------	----------	----------------



S-ILS 17R

RA 104/12 100 DA 190

CATEGORY II ILS - SPECIAL AIRCREW & AIRCRAFT CERTIFICATION REQUIRED

HIRL all Rwys
REIL Rwy 36L
TDZ/CL Rwys 17L/R, 18R, 35L/R and 36R

SE-3, 15 MAY 2025 to 12 JUN 2025

SE-3, 15 MAY 2025 to 12 JUN 2025