

ILS or LOC RWY 18R

ORLANDO INTL (MCO)

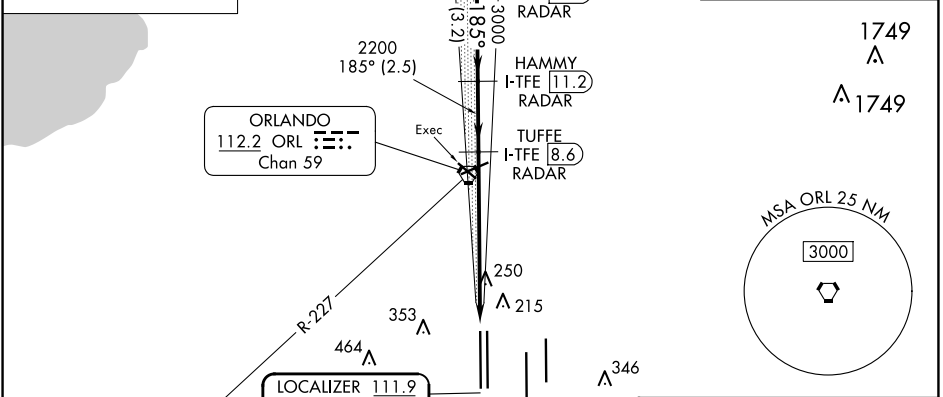
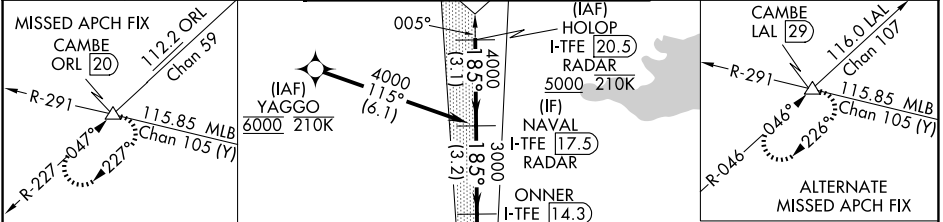
LOC/DME I-TFE 111.9 Chan 56	APP CRS 185°	Rwy Idg 12004 TDZE 94 Apt Elev 96
---	------------------------	--

DME or RADAR required.
RNP APCH-GPS. From YAGGO.

Simultaneous approach authorized.

MALSRL
MISSED APPROACH: Climb to 500 then climbing right turn to 4000 on heading 270° and on ORL VORTAC R-227 to CAMBE INT/ORL 20 DME and hold, continue climb-in-hold to 4000.

D-ATIS ARR 121.25 DEP 120.525	ORLANDO APP CON 124.8 307.0	ORLANDO TOWER 118.45 253.5 (Rwys 17L-35R, 17R-35L) 124.3 253.5 (Rwys 18L-36R, 18R-36L)	GND CON 126.4 (East) 121.8 (West)	CLNC DEL 134.7 341.7	CPDLC
---	---------------------------------------	--	---	--	-------



ELEV 96	TDZE 94
----------------	----------------

VGSI and ILS glidepath not coincident (VGSI Angle 3.00/TCH 71).

HOLOP I-TFE [20.5] NAVAL I-TFE [17.5] RADAR

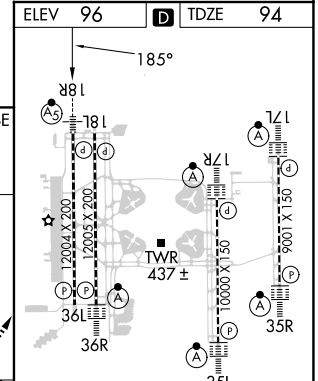
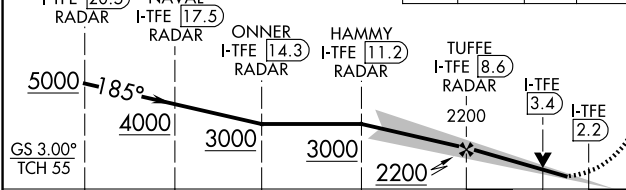
ONNER I-TFE [14.3] RADAR

HAMMY I-TFE [11.2] RADAR

TUFFE I-TFE [8.6] RADAR

I-TFE [3.4]

I-TFE [2.2]



CATEGORY	A	B	C	D
S-ILS 18R	294/18 200 (200-1/2)			
S-LOC 18R	540/24 446 (500-1/2)	540/45 446 (500-3/4)		
CIRCLING	740-1 644 (700-1)	740-1 3/4 644 (700-1 3/4)	740-2 644 (700-2)	
HIRL all Rwys REIL Rwy 36L TDZ/CL Rwys 17L/R, 18R, 35L/R, and 36R	FAF to MAP 6.4 NM			
Knots	60	90	120	150 180
Min:Sec	6:24	4:16	3:12	2:34 2:08

SE-3, 15 MAY 2025 to 12 JUN 2025

SE-3, 15 MAY 2025 to 12 JUN 2025