

WAAS CH 70438 W18A	APP CRS 182°	Rwy Idg TDZE Apt Elev	6001 111 111
--	------------------------	-----------------------------	---

RNAV (GPS) RWY 18

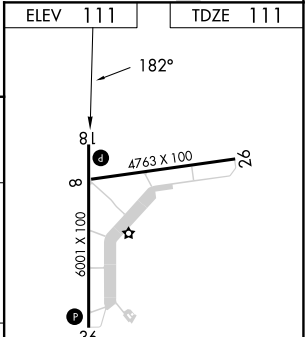
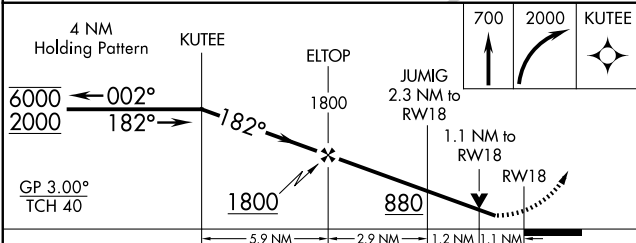
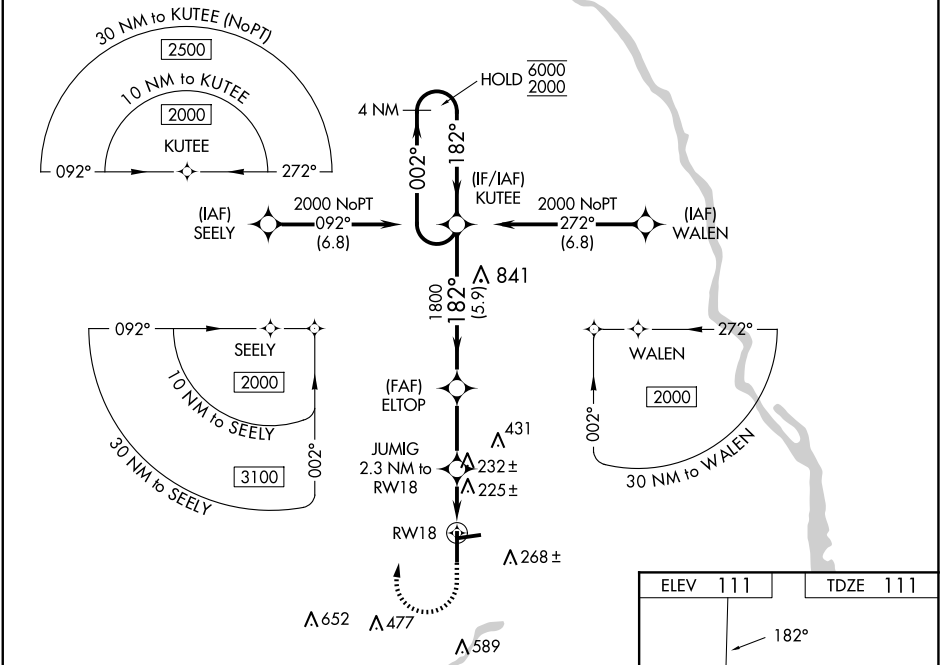
MARIANNA MUNI (MAI)

RNP APCH - GPS.

▼ Baro-VNAV and VDP NA when using BGE altimeter setting. For uncompensated Baro-VNAV systems, LNAV/VNAV NA below -2°C or above 54°C. Circling Rwy 8, 26 NA at night.
 ▲ Rwy 18 helicopter visibility reduction below ¾ SM NA. When local altimeter setting not received, use BGE altimeter setting: increase LPV DA to 479 feet; increase LNAV/VNAV DA to 559 feet and all visibilities ¾ SM; increase all MDAs 80 feet and LNAV visibility Cats C and D ¾ SM, and Circling visibility Cat D ¼ SM.

MISSED APPROACH: Climb to 700 then climbing right turn to 2000 direct KUTEE and hold.

ASOS 133.525	CAIRNS APP CON ★ 133.75 270.35	UNICOM 123.0 (CTAF) 0
------------------------	--	---------------------------------



CATEGORY	A	B	C	D
LPV DA		407-1	296 (300-1)	
LNAV/VNAV DA		487-1	376 (400-1)	
LNAV MDA		480-1	369 (400-1)	
C CIRCLING	620-1	509 (600-1)	620-1½ 509 (600-1½)	900-2½ 789 (800-2½)

MIRL Rwy 18-36 0

SE-3, 15 MAY 2025 to 12 JUN 2025

SE-3, 15 MAY 2025 to 12 JUN 2025