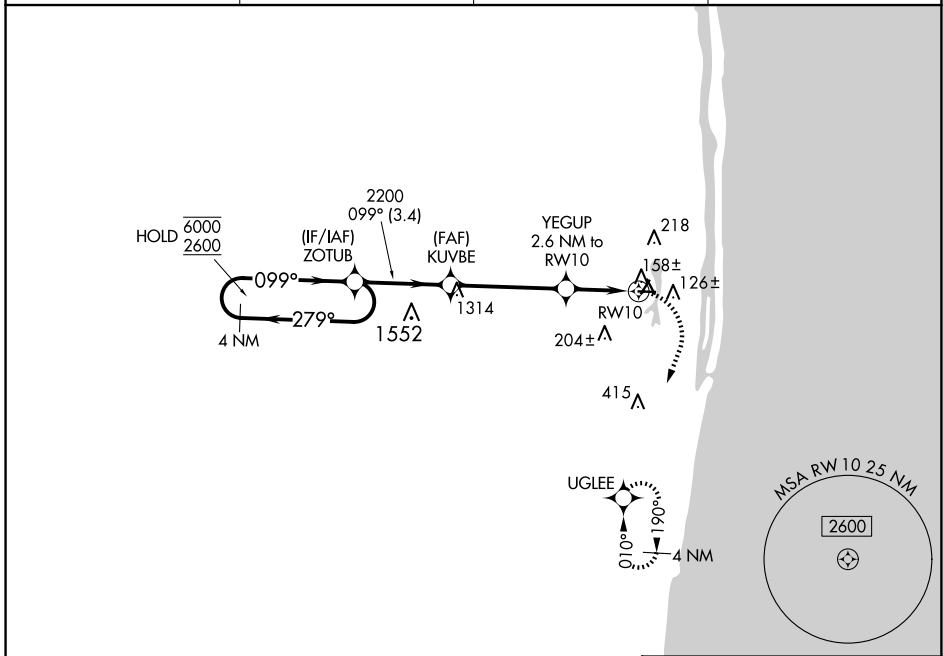


APP CRS	Rwy Idg	NA
099°	TDZE	NA
	Apt Elev	14

RNAV (GPS)-A

PALM BEACH COUNTY PARK (LNA)

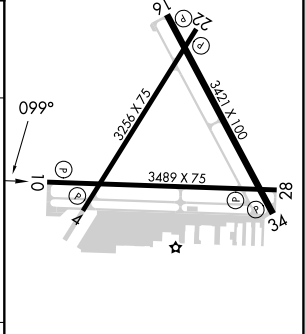
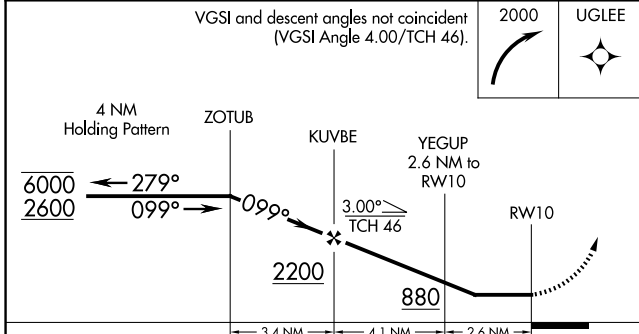
RNP APCH - GPS		MISSED APPROACH: (Do not exceed 210K until turn completion) Climbing right turn to 2000 direct UGLEE and hold; continue climb-in-hold to 2000.	
AWOS-3PT 119.925	PALM BEACH APP CON 127.35 343.6	CLNC DEL 127.35	UNICOM 122.7 (CTAF) 0



SE-3, 15 MAY 2025 to 12 JUN 2025

SE-3, 15 MAY 2025 to 12 JUN 2025

ELEV	14
------	----



CATEGORY	A	B	C	D
CIRCLING	480-1 466 (500-1)	540-1 526 (600-1)	580-1½ 566 (600-1½)	NA

MIRL Rwy 4-22, 10-28 and 16-34 0