

VORTAC CRG 114.5 Chan 92	APP CRS 316°	Rwy Idg TDZE 24 Apt Elev 30	7701
--	------------------------	---	-------------

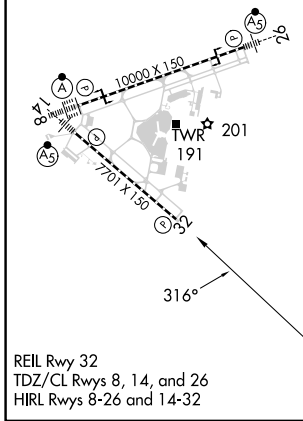
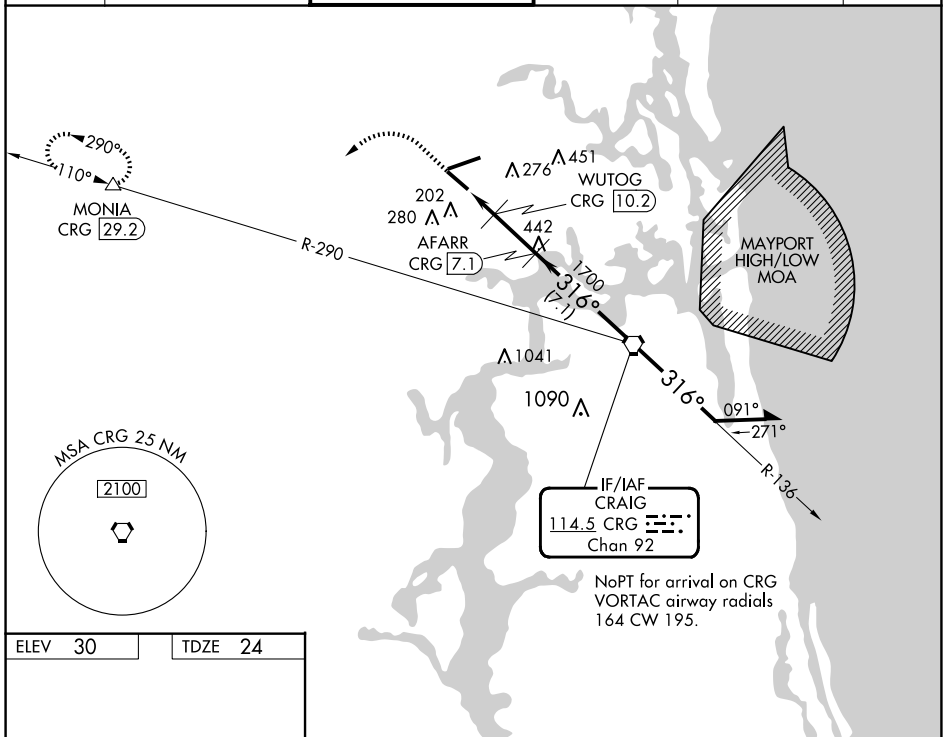
VOR/DME RWY 32

JACKSONVILLE INTL (JAX)

▼ Rwy 32 helicopter visibility reduction by below 3/4 SM NA.
▲ Cat E procedure turn NA.

MISSED APPROACH: Climb to 1000 then climbing left turn to 3000 on heading 250° and on CRG VORTAC R-290 to MONIA/CRG 29.2 DME and hold.

D-ATIS 125.85	JACKSONVILLE APP CON 119.0 269.9	JACKSONVILLE TOWER 118.3 317.7	GND CON 121.9 348.6	CLNC DEL 119.5 290.275	CPDLC
-------------------------	--	--	-------------------------------	----------------------------------	-------



1000	3000	CRG R-290	MONIA	VGSI and ILS glidepath not coincident (VGSI Angle 3.05/TCH 68).	
↑	hdg 250°		△		
		AFARR CRG 7.1	WUTOG CRG 10.2	CRG VORTAC 6000	
		CRG 12.2	CRG 11.1	Remain within 10 NM	
		720	1700	136°	
		720	1700	316°	
		1.1 0.9 → 3.1 NM	→ 7.1 NM	2100	
CATEGORY	A	B	C	D	E
S-32	460-1	436 (500-1)	460-1 1/4	436 (500-1 1/4)	
CIRCLING	520-1	490 (500-1)	580-1 1/2 550 (600-1 1/2)	580-2 550 (600-2)	760-2 1/2 730 (800-2 1/2)

SE-3, 15 MAY 2025 to 12 JUN 2025

SE-3, 15 MAY 2025 to 12 JUN 2025