

LOC I-FXE 111.1	APP CRS 091°	Rwy Idg 6002
		TDZE 13
		Apt Elev 13

ILS or LOC RWY 9

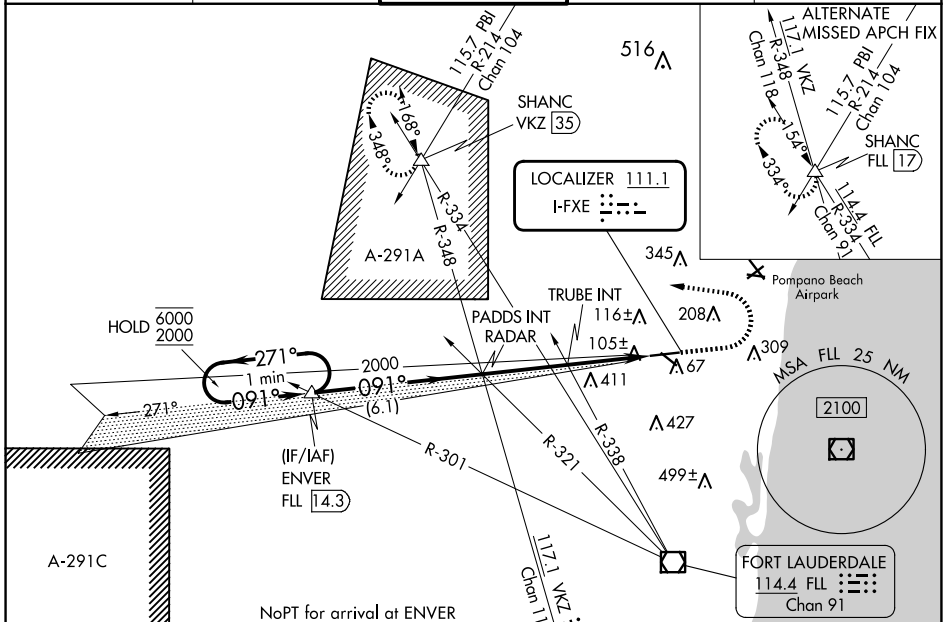
FORT LAUDERDALE EXEC (FXE)

When local altimeter setting not received, use FLL altimeter setting: increase S-ILS 9 DA to 231 feet; increase all MDAs 20 feet.

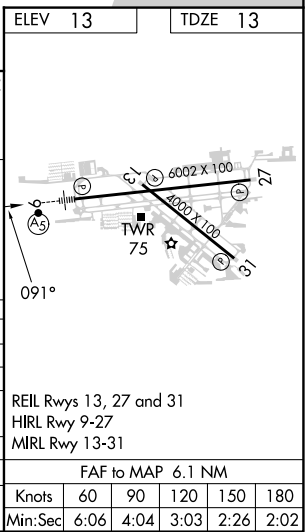
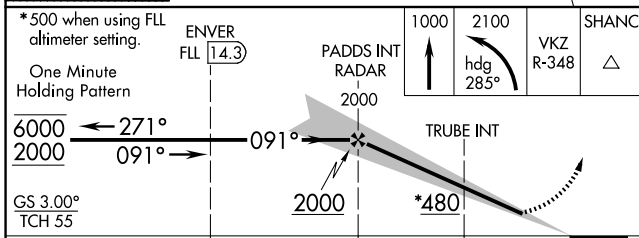
MALSR

MISSED APPROACH: Climb to 1000 then climbing left turn to 2100 on heading 285° and on VKZ VOR/DME R-348 to SHANC INT/VKZ 35 DME and hold.

ATIS 119.85	MIAMI APP CON 119.7 306.3	EXECUTIVE TOWER 120.9 239.3	GND CON 121.75	CLNC DEL 127.95
-----------------------	-------------------------------------	---------------------------------------	--------------------------	---------------------------



ELEV 13	TDZE 13
---------	---------



CATEGORY	A	B	C	D
S-ILS 9	213-1/2 200 (200-1/2)			
S-LOC 9*	480-1/2 467 (500-1/2) 480-1 467 (500-1)			
CIRCLING	520-1	620-1	780-2 1/4	780-2 1/2
	507 (600-1)	607 (700-1)	767 (800-2 1/4)	767 (800-2 1/2)
TRUBE FIX MINIMUMS (DUAL VOR RECEIVERS REQUIRED)				
S-LOC 9	360-1/2 347 (400-1/2)		360-3/8 347 (400-3/8)	
CIRCLING	520-1	620-1	780-2 1/4	780-2 1/2
	507 (600-1)	607 (700-1)	767 (800-2 1/4)	767 (800-2 1/2)

SE-3, 15 MAY 2025 to 12 JUN 2025

SE-3, 15 MAY 2025 to 12 JUN 2025