

|  |                        |   |
|--|------------------------|---|
| WAAS<br>CH <b>82508</b><br><b>W14A</b> | APP CRS<br><b>142°</b> | Rwy Idg <b>4755</b><br>TDZE <b>23</b><br>Apt Elev <b>23</b> |
|--|------------------------|---|

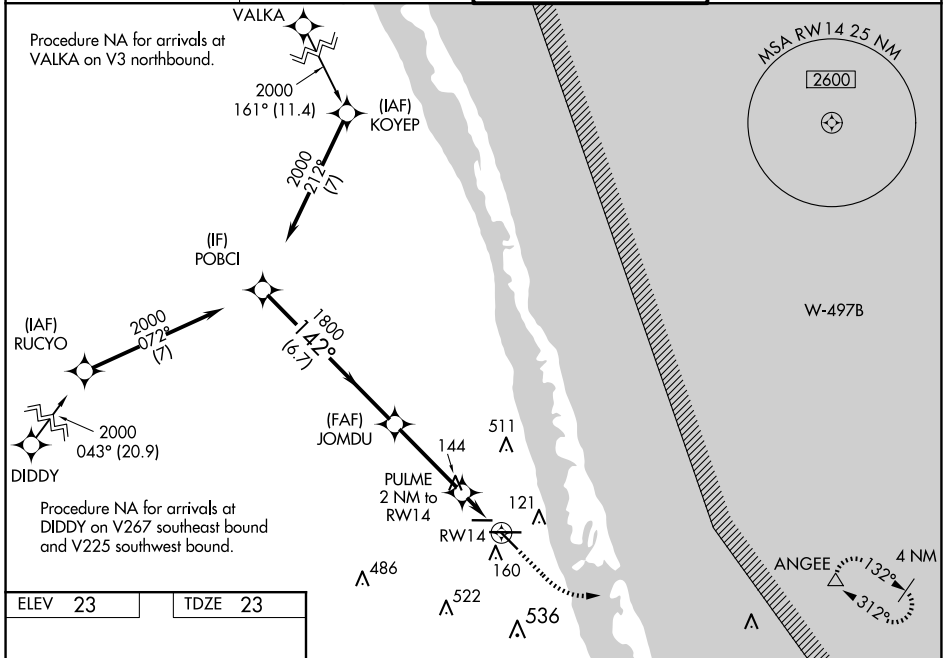
# RNAV (GPS) RWY 14

TREASURE COAST INTL (FPR)

**⚠** Baro-VNAV NA when using Vero Beach altimeter setting. For uncompensated Baro-VNAV systems, LNAV/VNAV NA below -15°C (5°F) or above 43°C (109°F). When VGSI inop, Straight-in/Circling Rwy 14 procedure NA at night. DME/DME RNP-0.3 NA. Helicopter visibility below 1 SM NA. When local altimeter setting not received, use Vero Beach altimeter setting and increase LPV DA to 303, LNAV/VNAV DA to 378 and all MDA 40 feet; increase LNAV visibility Cats C/D ½ SM; increase Circling visibility Cat C/D ¼ SM.

**⚠** MISSED APPROACH: Climb to 480 then climbing left turn to 2000 direct ANGEE and hold.

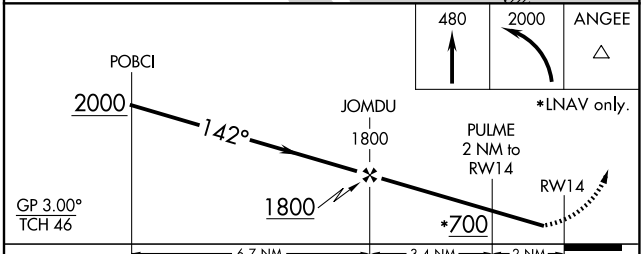
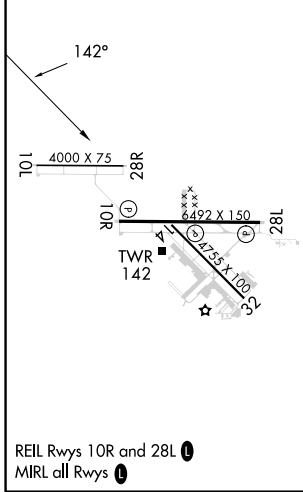
|                        |                                    |   |                                |
|------------------------|------------------------------------|---|--------------------------------|
| ATIS<br><b>134.825</b> | PALM BEACH APP CON<br><b>132.8</b> | FORT PIERCE TOWER*<br><b>128.2 (CTAF) 0</b> | GND CON (GCO)<br><b>119.55</b> |
|------------------------|------------------------------------|---|--------------------------------|



SE-3, 15 MAY 2025 to 12 JUN 2025

SE-3, 15 MAY 2025 to 12 JUN 2025

|         |         |
|---------|---------|
| ELEV 23 | TDZE 23 |
|---------|---------|



| CATEGORY          | A                    | B                    | C                      | D                      |
|-------------------|----------------------|----------------------|------------------------|------------------------|
| LPV DA            |                      | 280-1                | 257 (300-1)            |                        |
| LNAV/VNAV DA      |                      | 355-1½               | 332 (400-1½)           |                        |
| LNAV MDA          |                      | 400-1                | 377 (400-1)            |                        |
| <b>C</b> CIRCLING | 460-1<br>437 (500-1) | 480-1<br>457 (500-1) | 880-2½<br>857 (900-2½) | 880-2¾<br>857 (900-2¾) |