

RNAV (GPS) RWY 5

PAGE FLD (FMY)

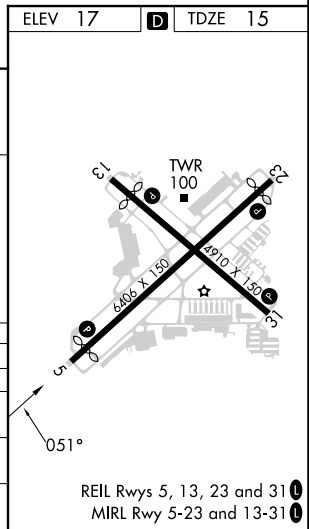
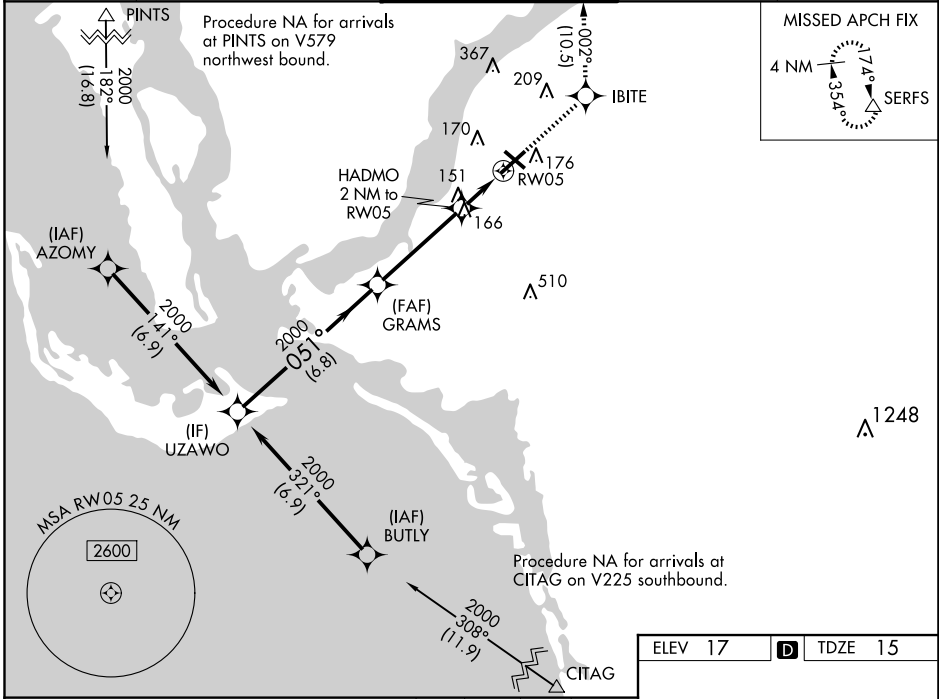
WAAS CH 72624 W05A	APP CRS 051°	Rwy Idg 5545 TDZE 15 Apt Elev 17
--	------------------------	---

RNP APCH.

When Circling to Rwy 31 at night, operational VGSI required, remain on or above VGSI glidepath until threshold. Rwy 5 helicopter visibility reduction below $\frac{3}{4}$ SM NA. For uncompensated Baro-VNAV systems, LNAV/VNAV NA below 4°C or above 54°C.

MISSED APPROACH: Climb to 2600 direct IBITE and on track 002° to SERFS and hold.

ATIS 123.725	FORT MYERS APP CON ★ 125.15 306.2 (Rwys 5, 13) 126.8 306.2 (Rwys 23, 31)	PAGE TOWER ★ 119.0 (CTAF) 306.95	GND CON 121.7	CLNC DEL 121.7
------------------------	--	---	-------------------------	--------------------------



	2600	IBITE	SERFS
	↑	✧	tr 002° △
UZAWO	GRAMS	HADMO 2 NM to RW05	RW05
2000	2000	*1.1 NM to RW05	*700
GP 3.00°	051°		
TCH 53	2000		
	6.8 NM	4.1 NM	0.9 NM, 1.1 NM
CATEGORY	A	B	C
LPV DA		265- $\frac{3}{4}$	250 (300- $\frac{3}{4}$)
LNAV/VNAV DA		317- $\frac{7}{8}$	302 (300- $\frac{7}{8}$)
LNAV MDA	420-1	405 (500-1)	420-1 $\frac{1}{8}$ 405 (500-1 $\frac{1}{8}$)
C CIRCLING	540-1	523 (600-1)	600-1 $\frac{1}{2}$ 583 (600-1 $\frac{1}{2}$) 680-2 663 (700-2)

*LNAV only.

SE-3, 15 MAY 2025 to 12 JUN 2025

SE-3, 15 MAY 2025 to 12 JUN 2025