

WAAS CH <b>61002</b> <b>W28A</b>	APP CRS <b>276°</b>	Rwy Idg TDZE Apt Elev	<b>8394</b> <b>7</b> <b>65</b>
--	------------------------	-----------------------------	--------------------------------------

# RNAV (GPS) Y RWY 28R

FORT LAUDERDALE/HOLLYWOOD INTL (FLL)

RNP APCH - GPS.

**⚠** Simultaneous approach authorized. Use of FD or AP required during simultaneous operations. LNAV procedure NA during simultaneous operations. Inop table does not apply to LPV all Cats. For uncompensated Baro-VNAV systems, LNAV/VNAV NA below 7°C or above 54°C. For inop ALS, increase LNAV/VNAV all Cats visibility to 1½ SM and LNAV Cats C/D to 1¼ SM.



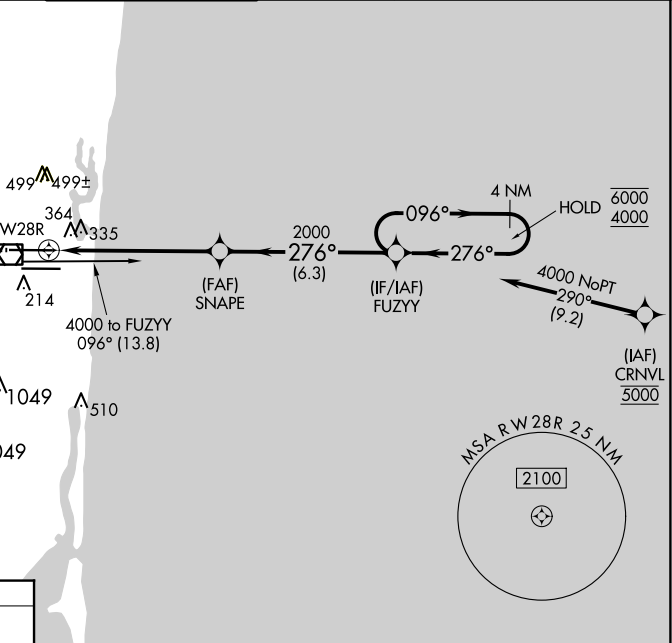
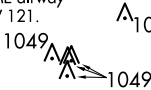
**MISSED APPROACH:**  
Climb to 800 then climbing right turn to 4000 direct HUKUK and hold, continue climb-in-hold to 4000.

D-ATIS <b>135.0</b>	MIAMI APP CON <b>133.775 285.6</b>	<b>FORT LAUDERDALE TOWER</b> <b>119.3 257.8</b>	GND CON <b>121.4</b>	CLNC DEL <b>128.4</b>	CPDLC
------------------------	---------------------------------------	--	-------------------------	--------------------------	-------

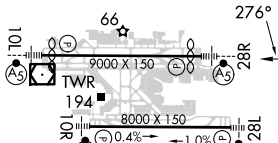
MISSED APCH FIX



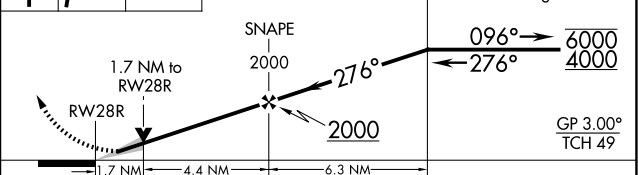
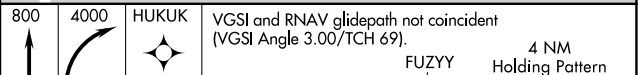
Procedure NA for arrival on FLL VOR/DME airway radials 013 CW 121.



ELEV 65	<b>D</b>	TDZE 7
---------	----------	--------



HIRL Rwy 10L-28R and 10R-28L



CATEGORY	A	B	C	D
LPV DA		257/40	250 (200-¾)	
LNAV/VNAV DA		581-1¼	574 (600-1¼)	
LNAV MDA	620/24	613 (600-½)	620-1¾	613 (600-1¾)
<b>C</b> CIRCLING	680-1	615 (700-1)	800-2 735 (800-2)	800-2¼ 735 (800-2¼)

SE-3, 15 MAY 2025 to 12 JUN 2025

SE-3, 15 MAY 2025 to 12 JUN 2025