

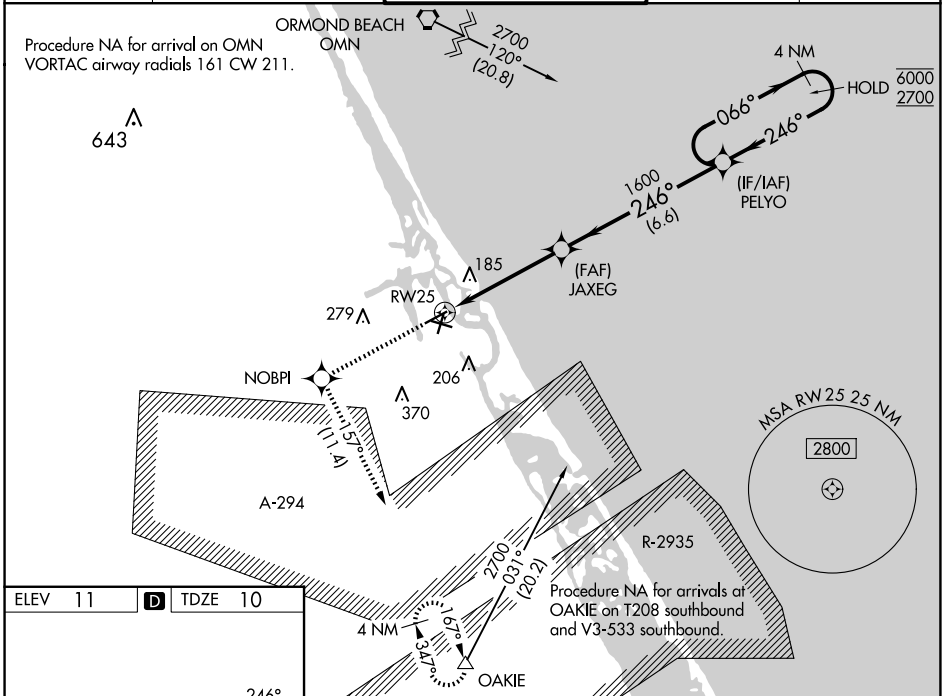
WAAS CH 50500 W25A	APP CRS 246°	Rwy Ldg 4463 TDZE 10 Apt Elev 11
--	------------------------	---

RNAV (GPS) RWY 25

NEW SMYRNA BEACH MUNI (JACK BOLT FLD) (EVB)

RNP APCH-GPS.	<p>▼ Rwy 25 helicopter visibility reduction below 1 SM NA. Straight-in Rwy 25 NA at night, Circling Rwy 7, 11, 25 NA at night. When local altimeter setting not received, use Daytona Beach altimeter setting increase LPV DA to 328 feet and all MDA 40 feet. Increase LNAV Cat C visibility 1/8 SM and Circling Cat C visibility 1/4 SM.</p>	<p>MISSED APPROACH: Climb to 4000 direct NOBPI and on track 157° to OAKIE and hold, continue climb-in-hold to 4000.</p>
---------------	--	---

ATIS 124.625	DAYTONA APP CON 125.35 322.3	NEW SMYRNA BEACH TOWER* 119.675 (CTAF) 0	GND CON 121.325	UNICOM 122.95
------------------------	--	--	---------------------------	-------------------------



ELEV 11	D	TDZE 10	<p>Procedure NA for arrivals at OAKIE on T208 southbound and V3-533 southbound.</p>	
4000	NOBPI	tr 157°	OAKIE	VGSI and RNAV glidepath not coincident (VGSI Angle 3.00/TCH 46).
4000	JAXEG	1600	PELYO	4 NM Holding Pattern
4000	RWY 25	1600	PELYO	066° → 6000 ← 246° 2700
4.7 NM	6.6 NM	GP 3.00° TCH 60		
CATEGORY	A	B	C	D
LPV DA	303-1 293 (300-1)			NA
LNAV MDA	440-1	430 (500-1)	440-1 1/4 430 (500-1 1/4)	NA
C CIRCLING	440-1 429 (500-1)	520-1 509 (600-1)	680-1 3/4 669 (700-1 3/4)	NA

MIRL Rwy 7-25 and 11-29 0
NEW SMYRNA BEACH, FLORIDA
Orig-C 26JAN23

NEW SMYRNA BEACH MUNI (JACK BOLT FLD) (EVB)
29°03'N-80°57'W
RNAV (GPS) RWY 25

SE-3, 07 AUG 2025 to 04 SEP 2025

SE-3, 07 AUG 2025 to 04 SEP 2025