

DESTIN, FLORIDA

AL-5680 (FAA)

25107

WAAS CH 56623 W32A	APP CRS 323°	Rwy Idg 5001 TDZE 20 Apt Elev 22
--	------------------------	---

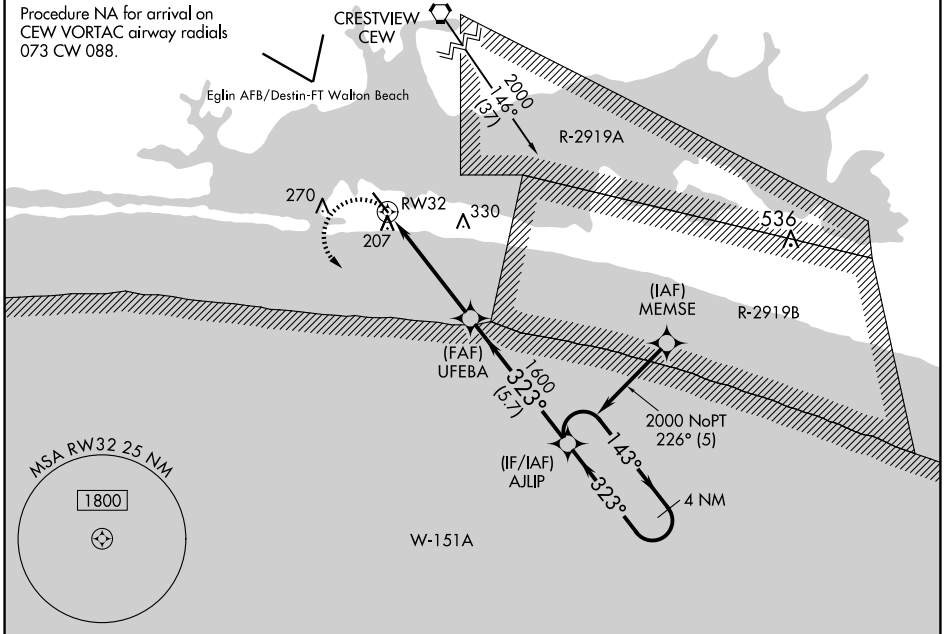
RNAV (GPS) RWY 32

DESTIN EXEC (DTS)

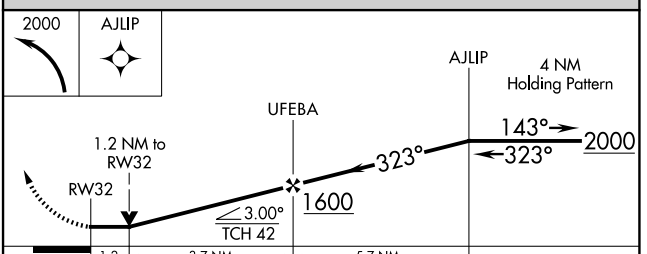
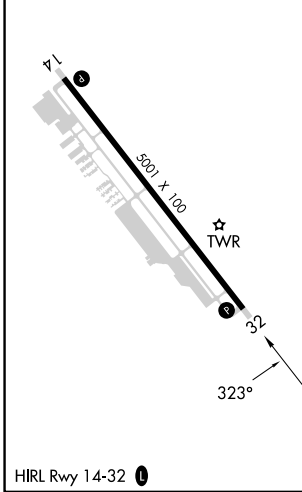
⚠ Rwy 32 helicopter visibility reduction below 3/4 SM NA. DME/DME RNP-0.3 NA. VDP NA when using Crestview altimeter setting. When local altimeter setting not received, use Crestview altimeter setting and increase all MDA 80 feet; increase LP Cats C and D visibility 1/4 SM, increase LNAV Cats C and D visibility 3/8 SM, and increase Circling Cat C visibility 1/4 SM.

MISSED APPROACH: Climbing left turn to 2000 direct AJLIP and hold.

ATIS 133.925	EGLIN APP CON 132.1 360.6	DESTIN TOWER ★ 118.45 (CTAF) 0	GND CON 121.6	CLNC DEL 121.6 377.2	CLNC DEL 127.7 (When twr closed)
------------------------	-------------------------------------	--	-------------------------	--------------------------------	---



ELEV 22	TDZE 20
----------------	----------------



CATEGORY	A	B	C	D
LP MDA	440-1	420 (500-1)	440-1 ¹ / ₈	420 (500-1 ¹ / ₈)
LNAV MDA	540-1	520 (600-1)	540-1 ³ / ₈	520 (600-1 ³ / ₈)
C CIRCLING	580-1	558 (600-1)	680-1 ³ / ₄ 658 (700-1 ³ / ₄)	680-2 658 (700-2)

DESTIN, FLORIDA
Amdt 1C 07DEC17

30°24'N-86°28'W

RNAV (GPS) RWY 32

DESTIN EXEC (DTS)

SE-3, 15 MAY 2025 to 12 JUN 2025

SE-3, 15 MAY 2025 to 12 JUN 2025