

APP CRS	Rwy Idg	<b>6001</b>
<b>302°</b>	TDZE	<b>72</b>
	Apt Elev	<b>79</b>

# RNAV (GPS) RWY 30

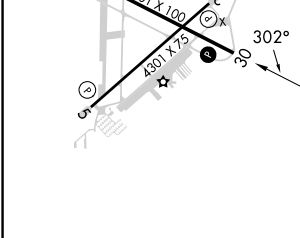
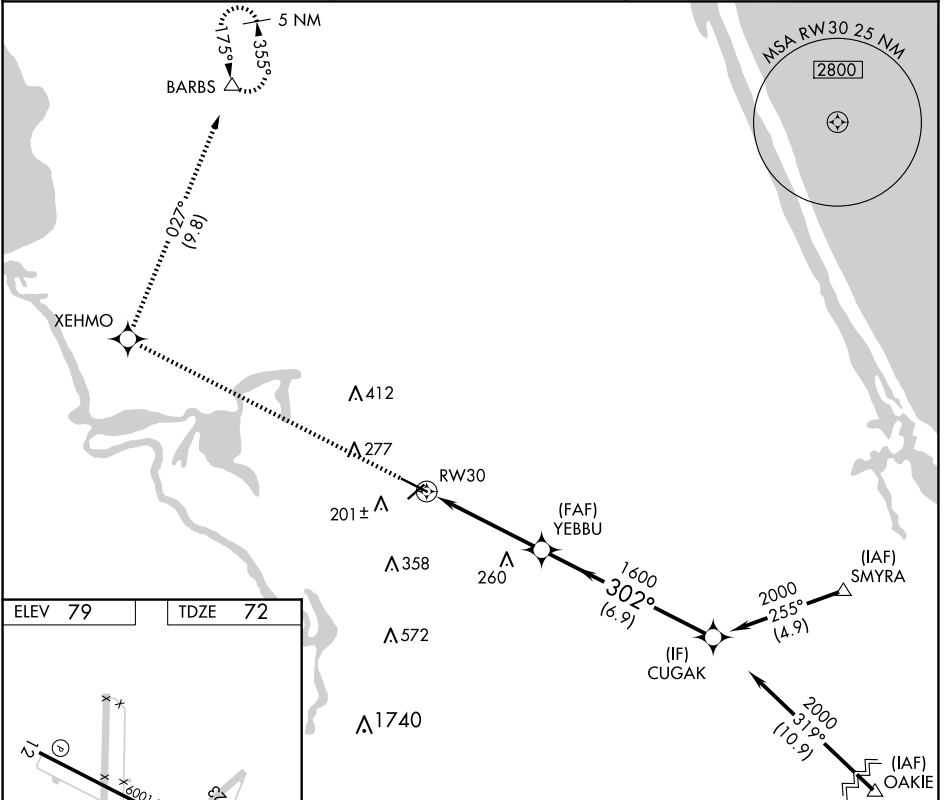
DELAND MUNI-SIDNEY H TAYLOR FLD (DED)

RNP APCH.

**⚠** Rwy 30 helicopter visibility reduction below 3/4 SM NA. VDP NA when using Daytona Beach Intl altimeter setting. When local altimeter setting not received, use Daytona Beach Intl altimeter setting and increase all MDAs 40 feet.

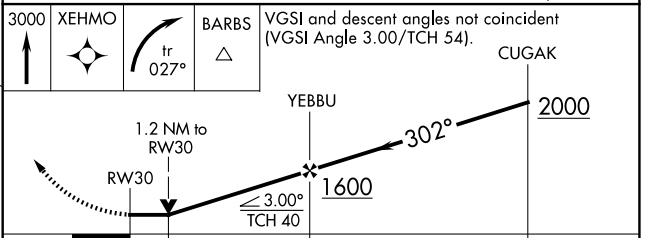
MISSED APPROACH: Climb to 3000 direct XEHMO and right turn on track 027° direct BARBS and hold.

AWOS-3 <b>119.575</b>	DAYTONA APP CON <b>125.35 322.3</b>	UNICOM <b>123.075 (CTAF) 0</b>
--------------------------	--	-----------------------------------



ELEV 79 | TDZE 72

HIRL Rwy 12-30 **Ⓡ**  
 MIRL Rwy 5-23 **Ⓡ**  
 REIL Rwy 12 and 30 **Ⓡ**



CATEGORY	A	B	C	D
LNAV MDA	500-1	428 (500-1)	500-1¼	428 (500-1¼)

SE-3, 15 MAY 2025 to 12 JUN 2025

SE-3, 15 MAY 2025 to 12 JUN 2025