

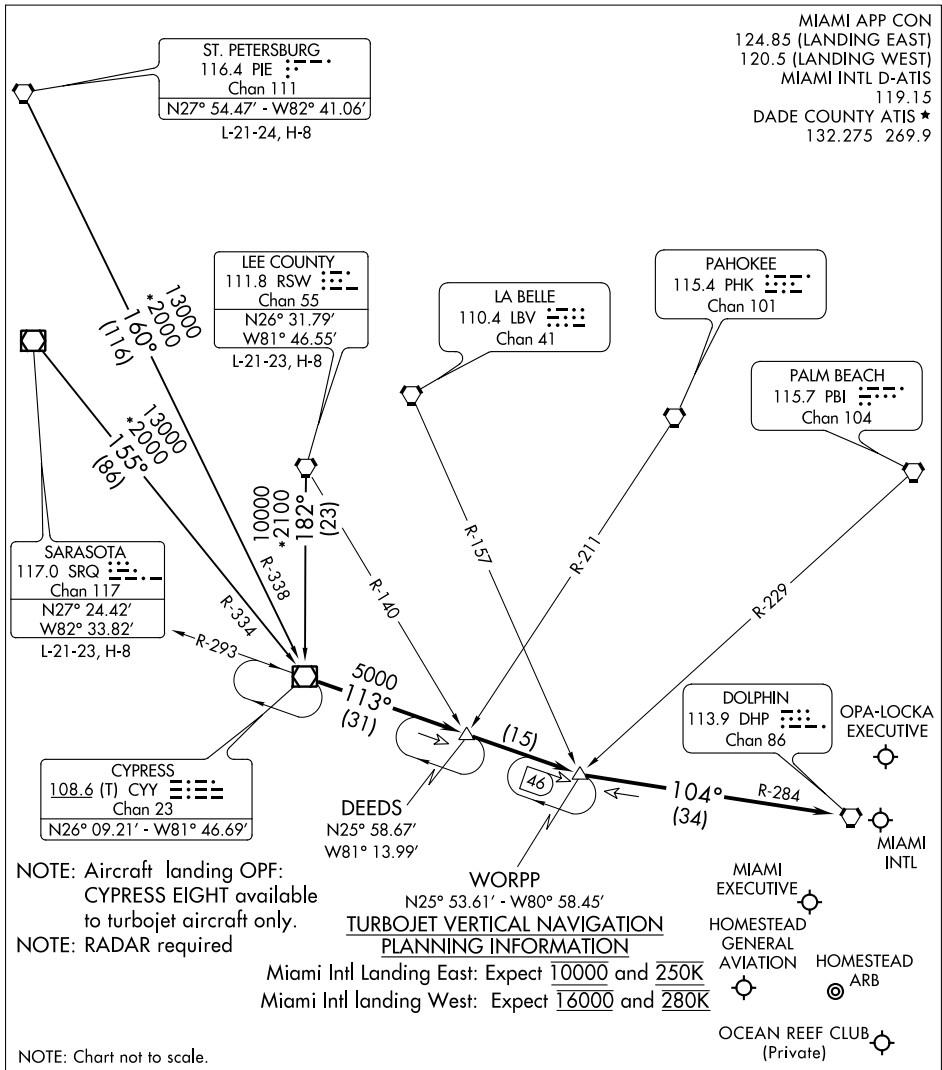
(CYY.CYY8) 17117

CYPRESS EIGHT ARRIVAL

AL-257 (FAA)

MIAMI, FLORIDA

MIAMI APP CON
 124.85 (LANDING EAST)
 120.5 (LANDING WEST)
 MIAMI INTL D-ATIS
 119.15
 DADE COUNTY ATIS ★
 132.275 269.9



SE-3, 17 AUG 2017 to 14 SEP 2017

SE-3, 17 AUG 2017 to 14 SEP 2017

NOTE: Chart not to scale.

LEE COUNTY TRANSITION (RSW.CYY8): From over RSW VORTAC on RSW R-182 to CYY VOR/DME. Thence. . . .

ST. PETERSBURG TRANSITION (PIE.CYY8): From over PIE VORTAC on PIE R-160 and CYY R-338 to CYY VOR/DME. Thence. . . .

SARASOTA TRANSITION (SRQ.CYY8): From over SRQ VOR/DME on SRQ R-155 and CYY R-334 to CYY VOR/DME. Thence. . . .

. . . .From over CYY VOR/DME via CYY R-113 to WORPP INT, then via DHP R-284 to DHP VORTAC. Expect RADAR vectors to final approach course.

CYPRESS EIGHT ARRIVAL

(CYY.CYY8) 15SEP16

MIAMI, FLORIDA