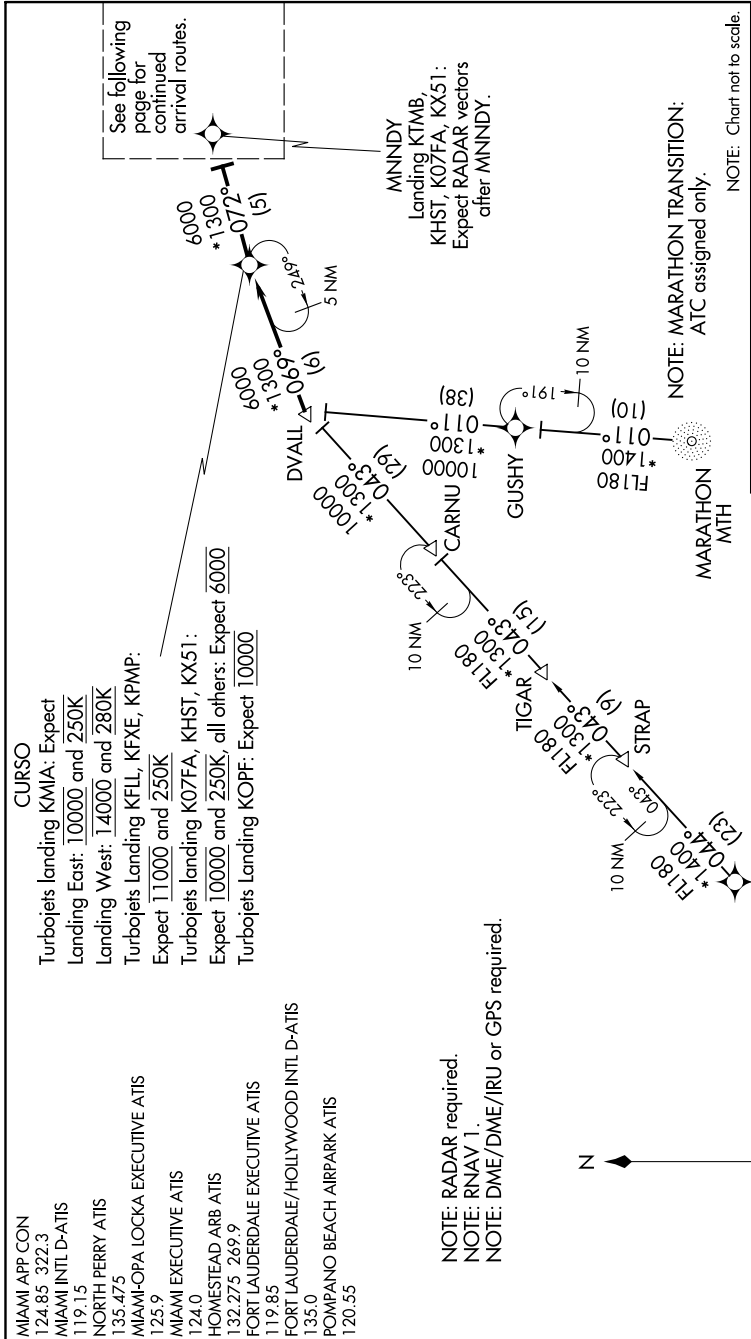


CURSO FIVE ARRIVAL (RNAV) Transition Routes

SE-3: 01 FEB 2018 to 01 MAR 2018



**EADEN TRANSITION (EADEN.CURSO5)**  
**MARATHON TRANSITION (MTH.CURSO5)**

ARRIVAL ROUTE DESCRIPTION  
 ... From DVALL on track 069° to CURSO,  
 then on track 072° to MNNDY.

(CONTINUED ON FOLLOWING PAGES)

SE-3: 01 FEB 2018 to 01 MAR 2018

- MIAMI APP CON 124.85 322.3
- MIAMI INTL D-ATIS 119.15
- NORTH PERRY ATIS 135.475
- MIAMI-OPA LOCKA EXECUTIVE ATIS 125.9
- MIAMI EXECUTIVE ATIS 124.0
- HOMESTEAD ARB ATIS 132.275 269.9
- FORT LAUDERDALE EXECUTIVE ATIS 119.85
- FORT LAUDERDALE/HOLLYWOOD INTL D-ATIS 135.0
- POMPANO BEACH AIRPARK ATIS 120.55

NOTE: RADAR required.  
 NOTE: RNAV 1.  
 NOTE: DME/DME/IRU or GPS required.



NOTE: MARATHON TRANSITION:  
 ATC assigned only.  
 NOTE: Chart not to scale.

See following page for continued arrival routes.

MNNDY  
 Landing KTMB,  
 KHST, K07FA, KX51:  
 Expect RADAR vectors  
 after MNNDY.

MARATHON  
 MTH