

VORTAC CRG 114.5 Chan 92	APP CRS 132°	Rwy ldg TDZE 41 Apt Elev 41	4008
--	------------------------	---	-------------

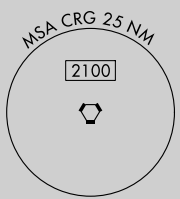
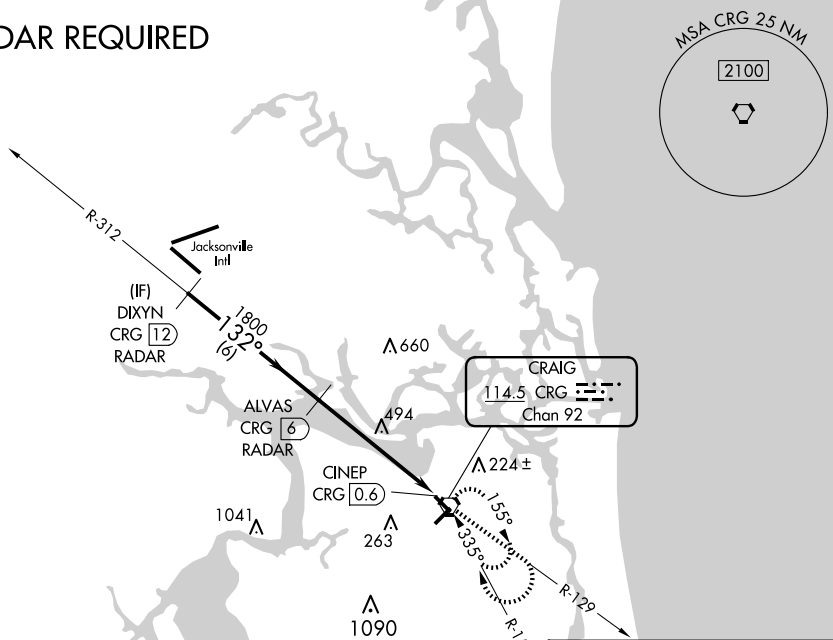
VOR RWY 14
JACKSONVILLE EXEC AT CRAIG (CRG)

Procedure NA at night.
DME or Radar required.
 Helicopter visibility reduction below 1 SM NA.

MISSED APPROACH: Climb to 2100 via CRG VORTAC R-129 then right turn direct CRG VORTAC and hold.

ATIS 125.4	JACKSONVILLE APP CON 124.9 308.4	CRAIG TOWER ★ 132.1 (CTAF) 269.525	GND CON 121.8	CLNC DEL 118.35	UNICOM 122.95
----------------------	--	---	-------------------------	---------------------------	-------------------------

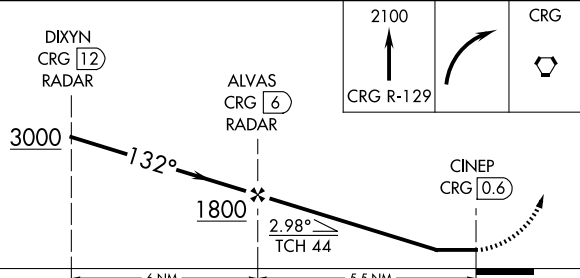
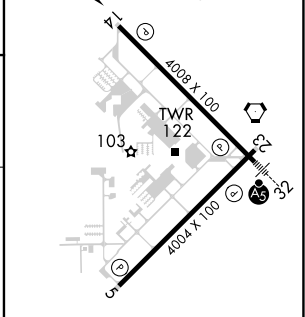
RADAR REQUIRED



SE-3, 15 MAY 2025 to 12 JUN 2025

SE-3, 15 MAY 2025 to 12 JUN 2025

ELEV 41	TDZE 41
----------------	----------------



CATEGORY	A	B	C	D
S-14	800-1 759 (800-1)	800-1¼ 759 (800-1¼)	800-2½	759 (800-2½)
CIRCLING	800-1 759 (800-1)	800-1¼ 759 (800-1¼)	800-2½	759 (800-2½)

MIRL Rwy 5-23	1
HIRL Rwy 14-32	1
REIL Rws 14 and 23	1
FAF to MAP 5.5 NM	
Knots	60 90 120 150 180
Min:Sec	5:30 3:40 2:45 2:12 1:50